

**FUSO**

## **General Description of ECU Field Rewriting Network System**

**MITSUBISHI FUSO TRUCK & BUS CORP.**

## What You Need to Prepare before Work

### Devices

1	MUT-III unit, VCL and connectors	Required to load new data into the ECU. If the MUT is not available, rewriting in the ECU memory is unfeasible.	Required
2	Removable disk (USB memory)	Required to store the file when you move new data in the server to the MUT-III or you move data that the MUT-III has loaded into the vehicle to the server. The CodingData_EOL folder should be created in USB memory before loading data.	Required
3	PC hooked up to the Internet	Required to load new data from the server and to load written files to the server. When at least one PC hooked up to the Internet is not available, rewriting in the ECU memory is unfeasible	Required

### MUT-3

1	Latest version of software	When the latest version of software is not available, you may not use the ECU rewriting function, or may not utilize software supporting new vehicle types or may not use other similar rewriting function.	Required
---	----------------------------	---	----------

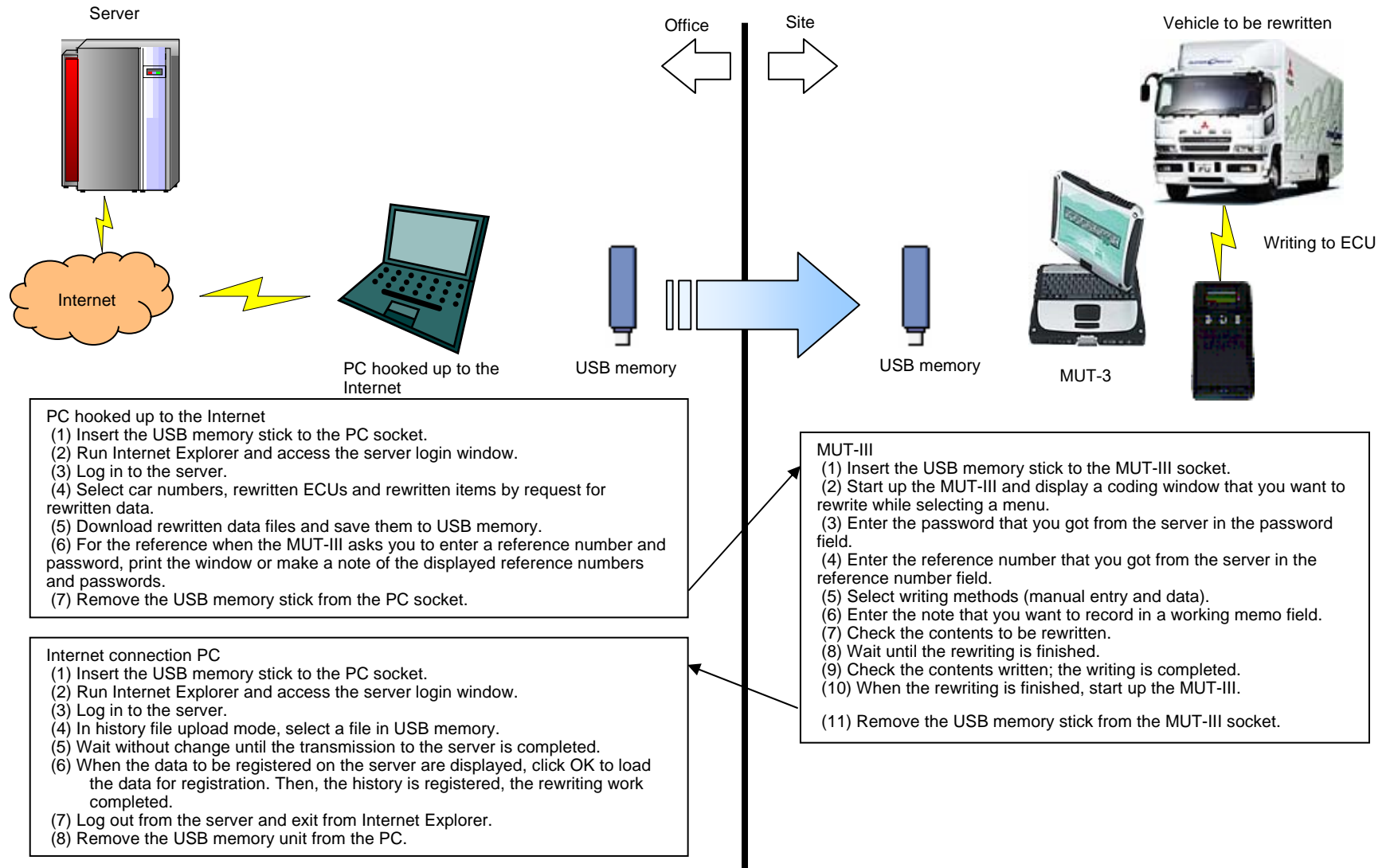
### Software necessary for PC accessible to an extra-net

1	Internet Explorer (Web browser)	This browser is required to access to the server. PCs without Internet Explorer 5.5 or later being installed may not allow you to correctly obtain data from the server.	Required
2	Microsoft office Excel	This software is useful for creating tables with new data obtained from the server. Even if this software is not installed, the work is not affected.	Optional
3	Antivirus software	This software is required to protect PCs from virus. If PCs, which are infected with virus, are left as they are, they may harm surroundings via the network. Note that because antivirus programs are updated day by day, it is important to as much keep the latest status as possible. Unless this software is installed, the work is not affected.	Optional

### What is needed for access to server

1	Server access authority	Send application forms with necessary items entered for each user to the system user management office in advance. Make contact, allowing for two or more business days before starting the use.	Required
---	-------------------------	--	----------

## Outline of rewriting work



# General Description of System



## How to Access System

① Run the Web browser.

② Enter <https://eol.mitsubishi-fuso.com/fss/> in the address bar field.

**Corporate Information**

- Outline
- Executives
- Organization Chart
- Roadmap
- Development
- Production
- Quality & technology
- R&D and production facilities
- FUSO History
- Environmental Activities
- CSR Activities

**Products**

- Products TOP

**International Sales & Service**

- Worldwide Distributors
- Special Report

**Technology**

- Q&A
- Technical Info
- Save Energy

Policy for Personal Information Protection

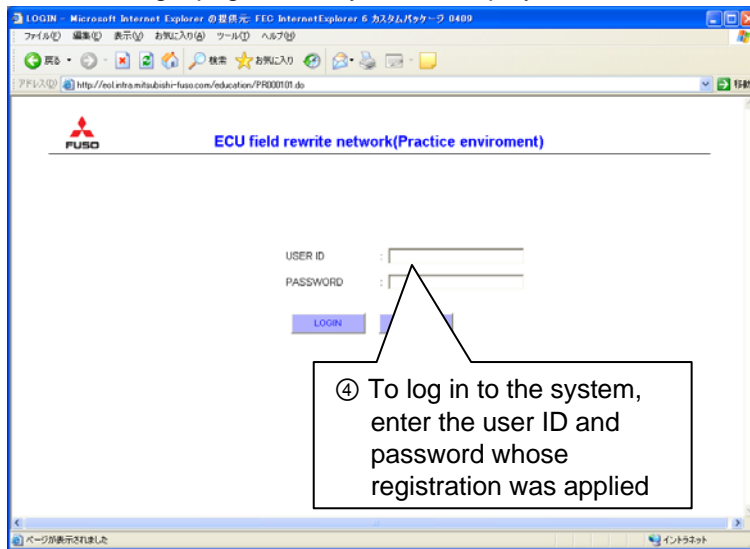
**NEWS**

- 2007.01.17 DaimlerChrysler Truck Group again posts record sales in 2006
- 2006.12.05 Mitsubishi Fuso Announces Results of 28th Annual Sketch Contest
- 2006.11.15 Mitsubishi Fuso Announces New Light-Duty Vehicle Initiative in Mexico
- 2006.10.31 DaimlerChrysler and Mitsubishi Fuso Conduct Student Educational Programs Under Takenoko Fund Cultural Exchange Initiative
- 2006.09.14 Mitsubishi Fuso Launches Next Generation Canter Truck in Turkey
- 2006.07.28 Mitsubishi Fuso Announces 2006 Summer Sketch Contest
- 2006.07.21 Mitsubishi Fuso Exhibits Advanced Vehicle Technology at Indonesia International Motor Show
- 2006.07.14 Mitsubishi Fuso Launches New Generation Canter in South Africa

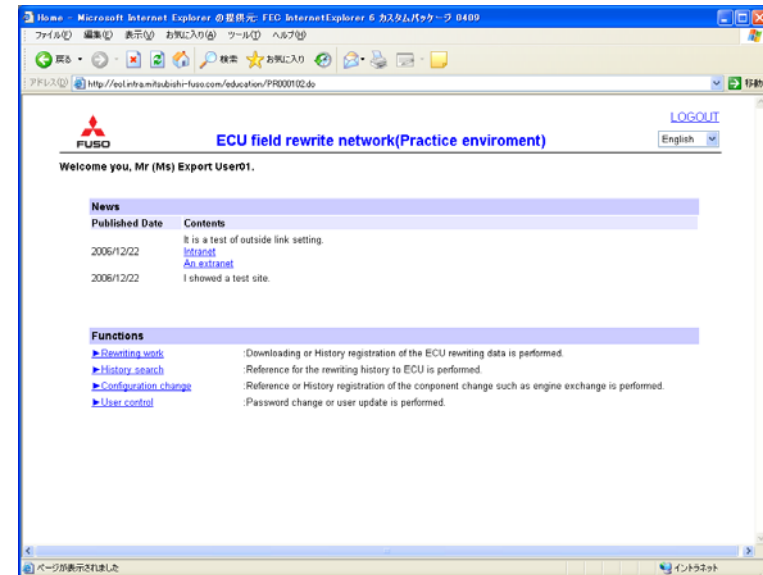
<Full Coverage>

## How to Access System

③ The login page to the system is displayed.

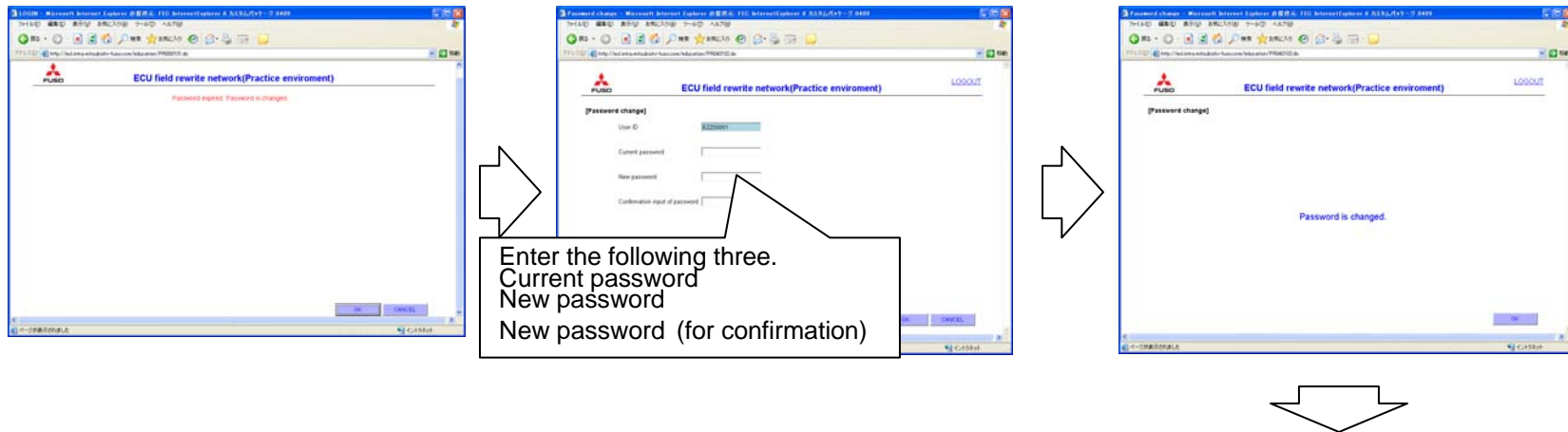


⑤ The system top page is displayed, the preparation for the work completed.



## How to Access System

At the time of the first login or when 30 or more days have passed after password change

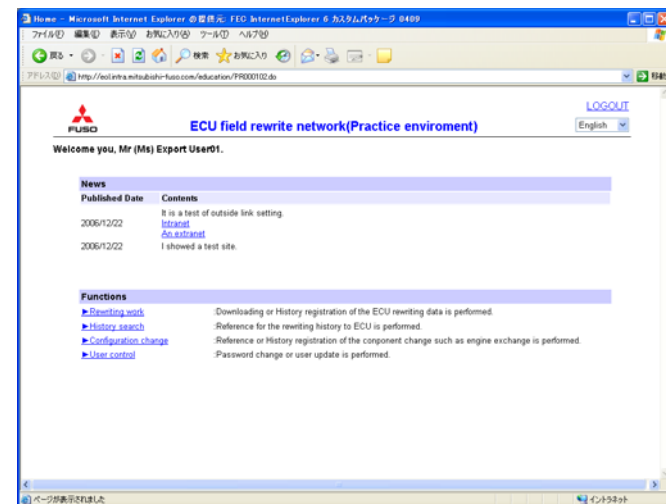


The system top page is displayed.

### Important: Notes on password change

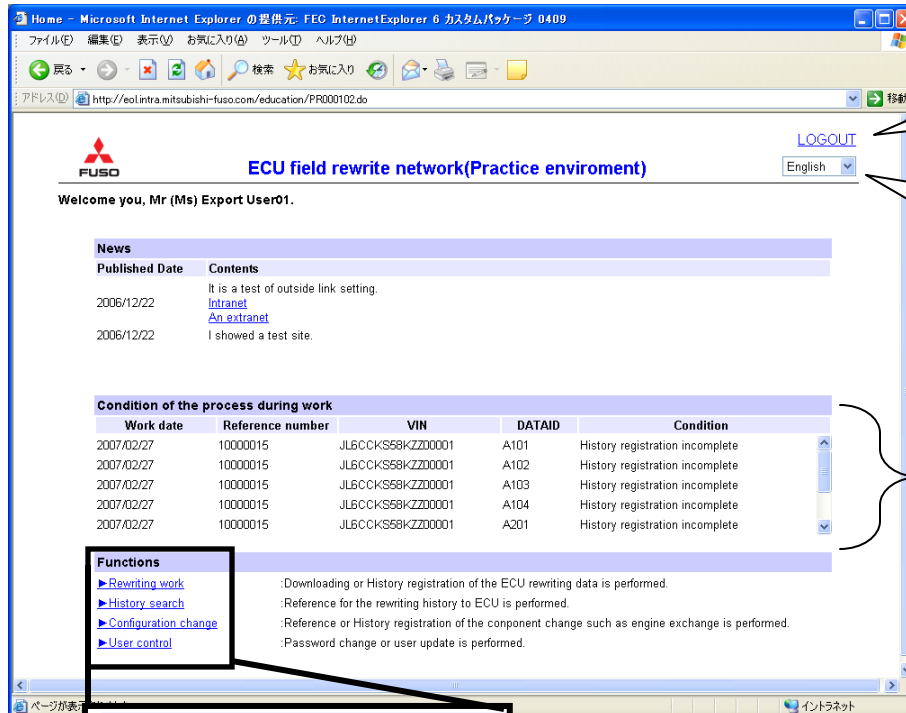
When a password is to be changed, set it following the following rules.

- Half-size alphanumeric characters (case-sensitive) can be used.
- Set at least six characters.
- Use one or more upper-case alphabets, one or more lower-case alphabets, and one or more numbers.
- Change to the same password as the current one is invalid.



## How to Access System

Window: Top page



Delete login information and display login page.

Japanese-language and English-language window displays can be selected. (The functions are the same.)

List of works in progress is displayed.

(Items whose history registration is completed are no longer displayed.)

**Functions**  
[▶ Rewriting work](#)  
[▶ History search](#)  
[▶ Configuration change](#)  
[▶ User control](#)

▶ Rewriting work :Downloading or History registration of the ECU rewriting data is performed.  
 ▶ History search :Reference for the rewriting history to ECU is performed.  
 ▶ Configuration change :Reference or History registration of the component change such as engine exchange is performed.  
 ▶ User control :Password change or user update is performed.

### Functions

[▶ Rewriting work](#)

Makes it possible to download and history-register written data.

[▶ History search](#)

Makes it possible to view the history of vehicle rewriting.

[▶ Configuration change](#)

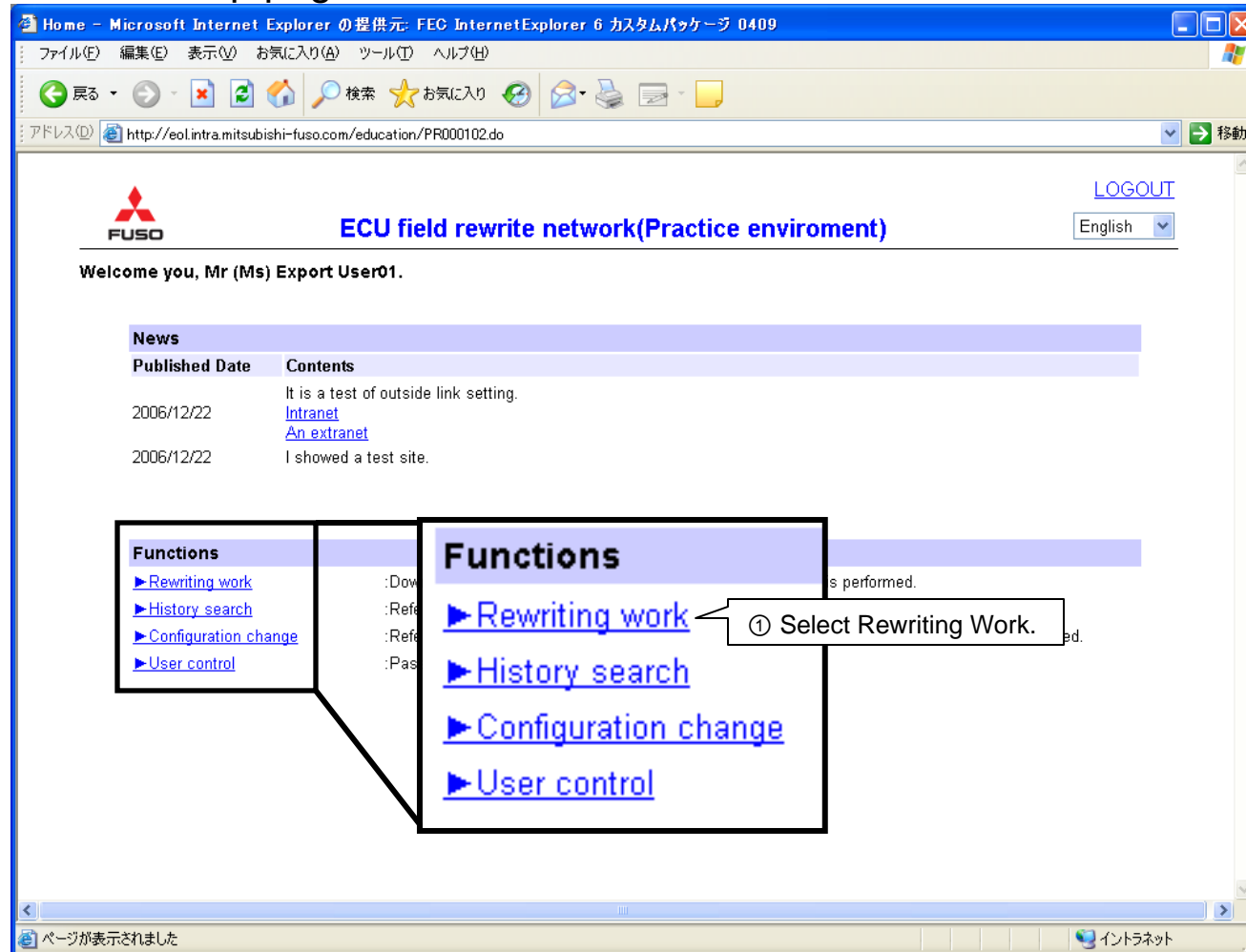
Makes it possible to change engines during engine modification and to register link engine data.

[▶ User control](#)

Makes it possible to change passwords.

## How to Get Data to be written

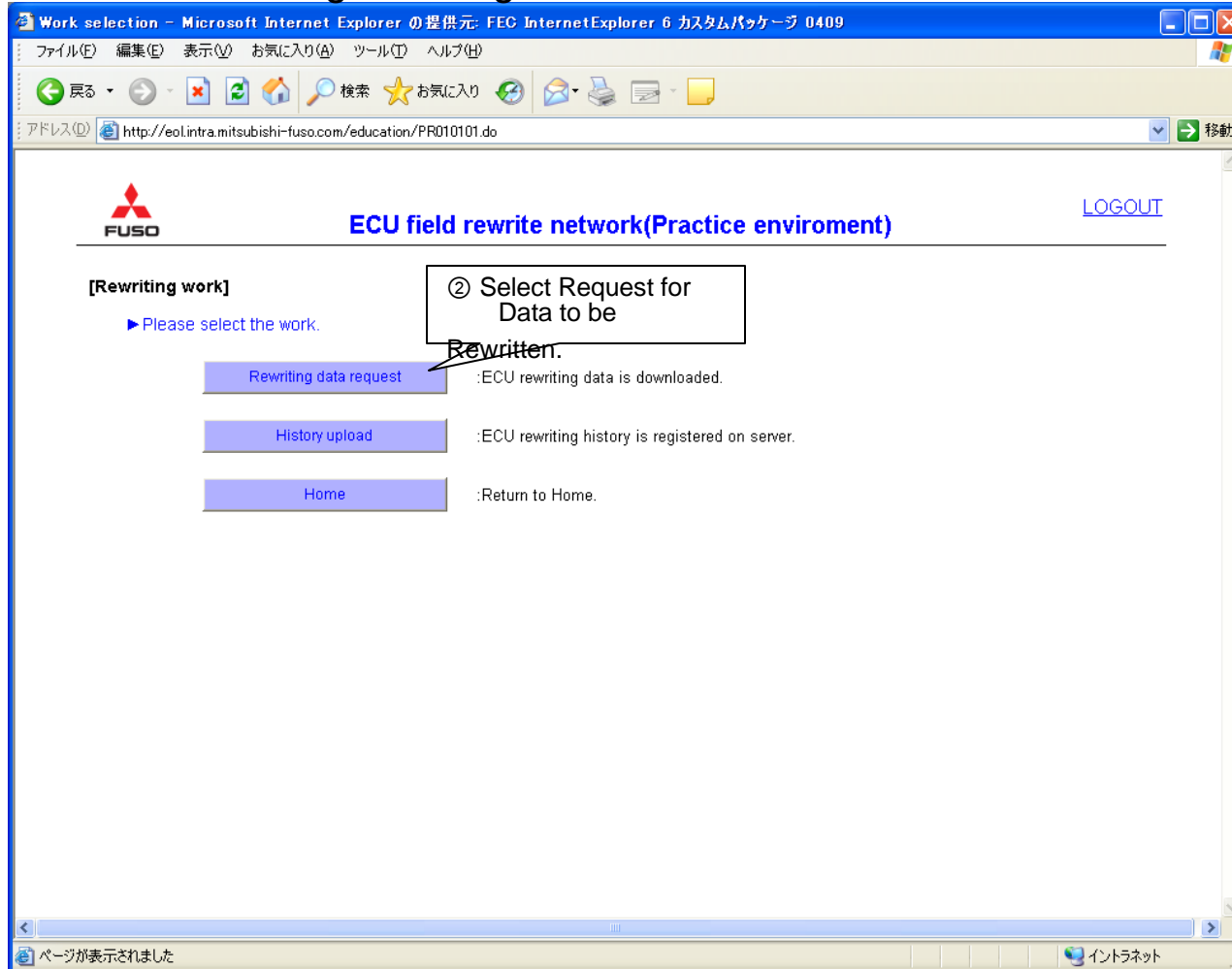
Window: Top page





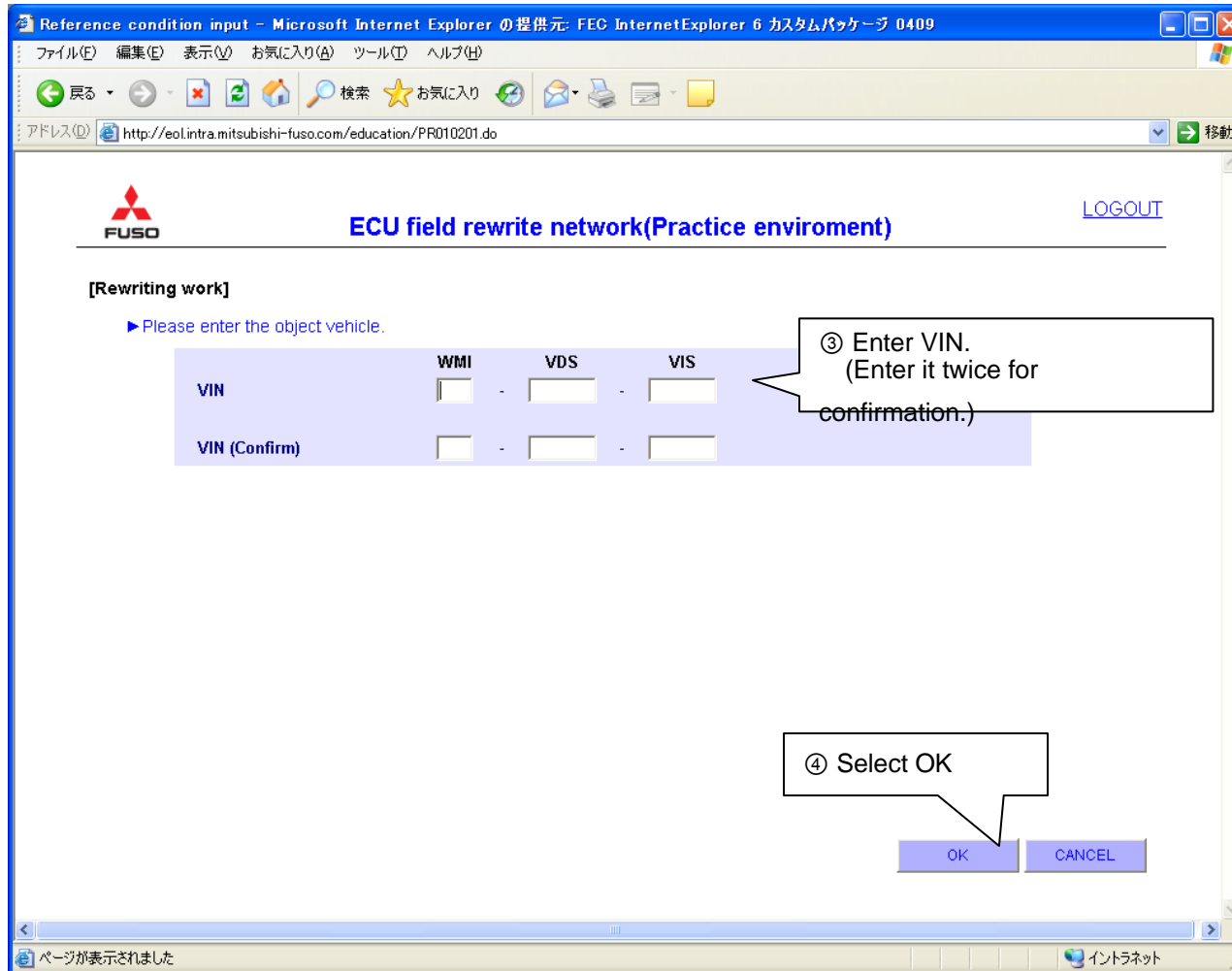
## How to Get Data to be written

Window: Selecting rewriting work



## How to Get Data to be written

Window: Vehicle selection




Reference condition input - Microsoft Internet Explorer の提供元: FEC Internet Explorer 6 カスタムパッケージ 0409

ファイル(E) 編集(E) 表示(V) お気に入り(A) ツール(T) ヘルプ(H)

戻る 検索 お気に入り

アドレス(D) http://eol.intra.mitsubishi-fuso.com/education/PR010201.do 移動

 **ECU field rewrite network(Practice enviroment)** [LOGOUT](#)

**[Rewriting work]**

▶ Please enter the object vehicle.

	WMI	VDS	VIS
VIN	<input type="text"/>	- <input type="text"/>	- <input type="text"/>
VIN (Confirm)	<input type="text"/>	- <input type="text"/>	- <input type="text"/>

③ Enter VIN.  
(Enter it twice for confirmation.)

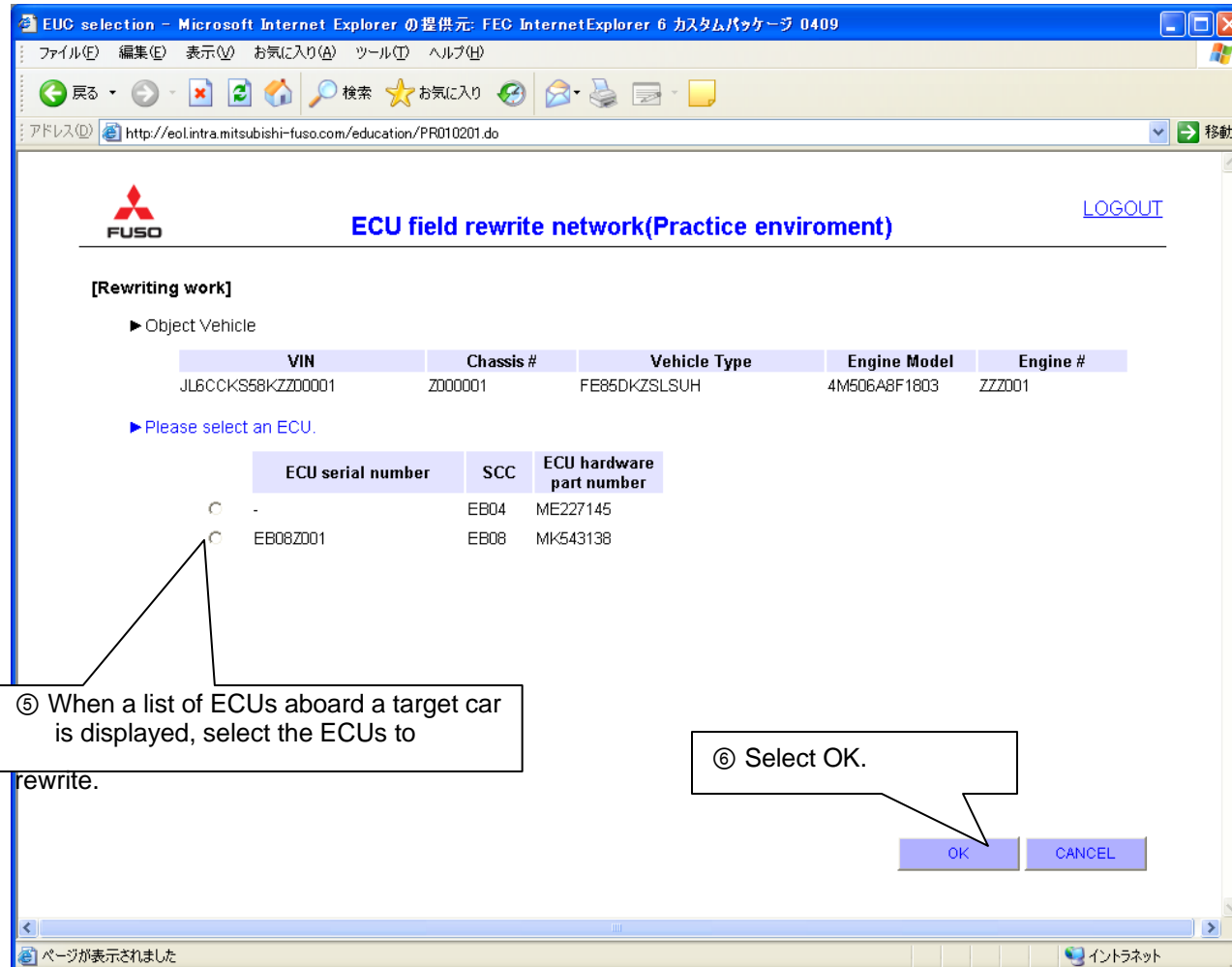
④ Select OK

OK CANCEL

ページが表示されました イン트라ネット

## How to Get Data to be written

Window: ECU selection



VIN	Chassis #	Vehicle Type	Engine Model	Engine #
JLBCKK58KZZ00001	Z000001	FE85DKZSLSUH	4M506A8F1803	ZZZ001

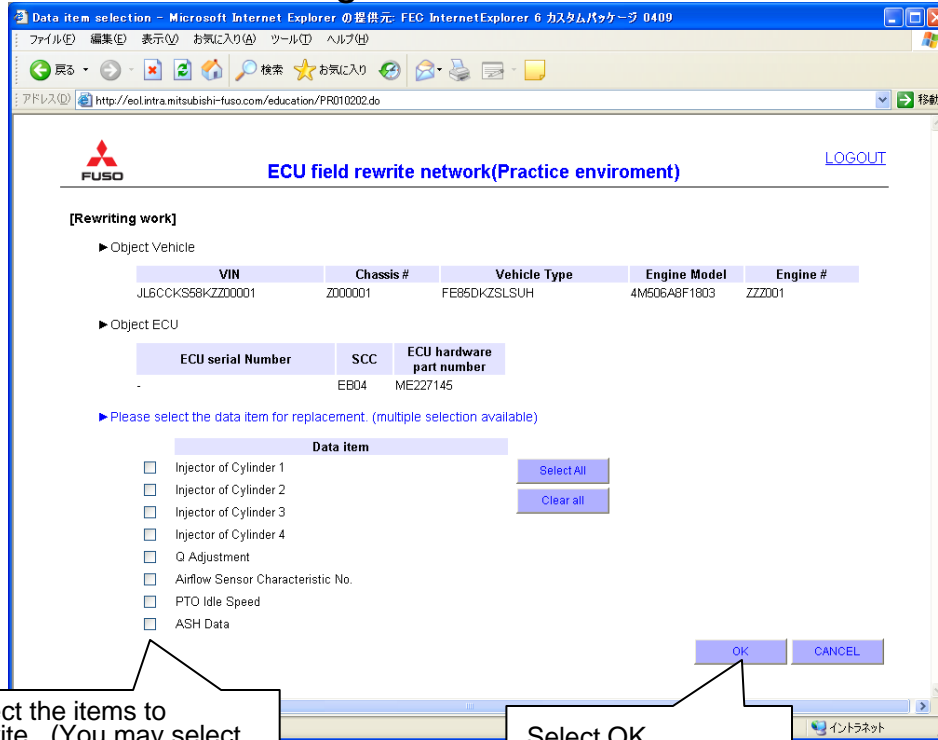
ECU serial number	SCC	ECU hardware part number
-	EB04	ME227145
EB08Z001	EB08	MK543138

⑤ When a list of ECUs aboard a target car is displayed, select the ECUs to rewrite.

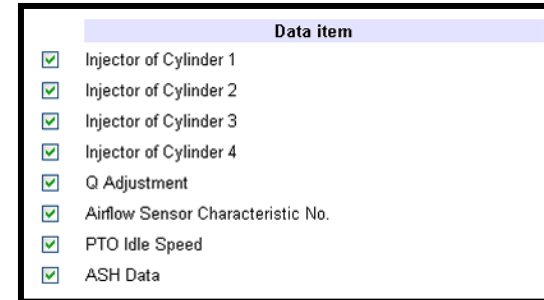
⑥ Select OK.

## How to Get Data to be written

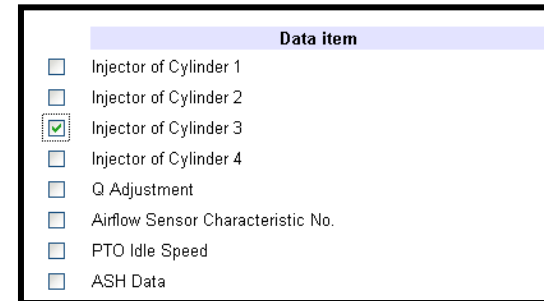
Window: Selecting items to be rewritten



When ECU is replaced (select all options.)



When injector is replaced (select pertinent items.)



## How to Get Data to be written

### Window: Download

Reference number	Data item name	DATA ID	Writing value	Download	Password
	Injector of Cylinder 1	A101	ARHUBC	Download	
	Injector of Cylinder 2	A102	ARHUBC	Download	
	Injector of Cylinder 3	A103	ARHUBC	Download	
	Injector of Cylinder 4	A104	ARHUBC	Download	
	Q Adjustment	A201	01FF	Download	
	Airflow Sensor Characteristic No.	A301	0000	Download	
	PTO Idle Speed	A401	00	Download	
	ASH Data	A601	0000	Download	

Pre-download state

Download	Password
ad	
ad	
ad	
ad	
ad	
ad	
ad	
ad	
ad	
ad	

Post-download state

Download	Password
ad	406294
ad	406294
ad	406294
ad	406294
ad	406294
ad	406294
ad	406294
ad	406294
ad	406294
ad	406294

Saving location selection window displayed when the download in ③ is selected (specify Coding Data\_EOL.)

When all passwords are displayed, press the EXIT button. A confirmation message asking whether you printed the contents or made a note of them is displayed. (In progress of modification)  
 \*: Before pressing the EXIT button, make a note of the reference numbers and passwords in the window or print the window.

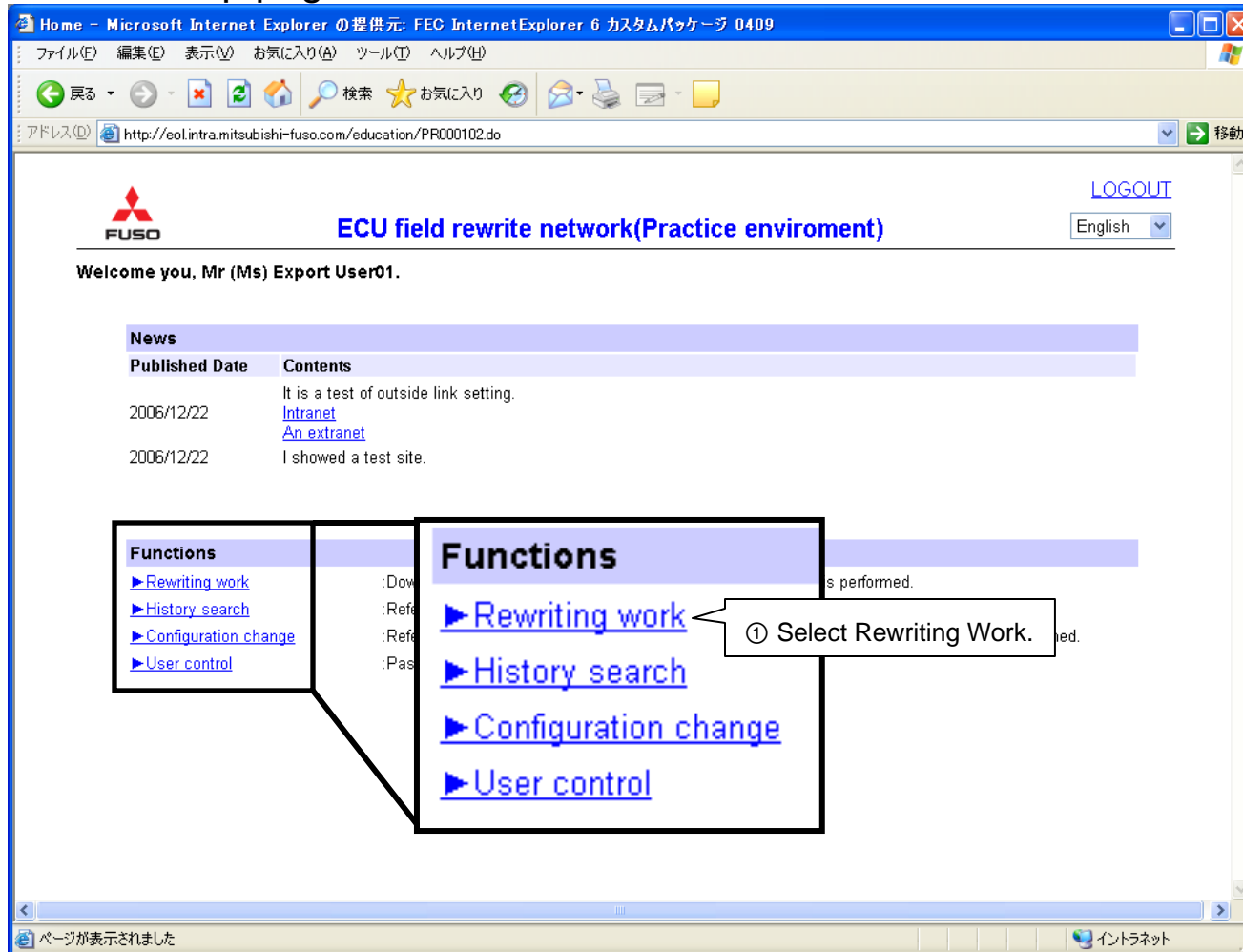
EXIT

### 6. Important: Notes on download

- Because a file name is entered when you select a saving location, save the file without changing the file name. (If the file name is changed, it cannot be identified by the MUT.)
- Before starting the download, be sure to check that the password is displayed next to the file name to be downloaded.
- When the download is completed, be sure to make a note of the reference numbers and passwords or print the window by selecting File->Print in the menu. (The window does not show vehicle numbers and download dates. When you print the contents or make a note of them, enter vehicle numbers and download dates so that you should not make mistakes. \*: The display is to be modified soon.)

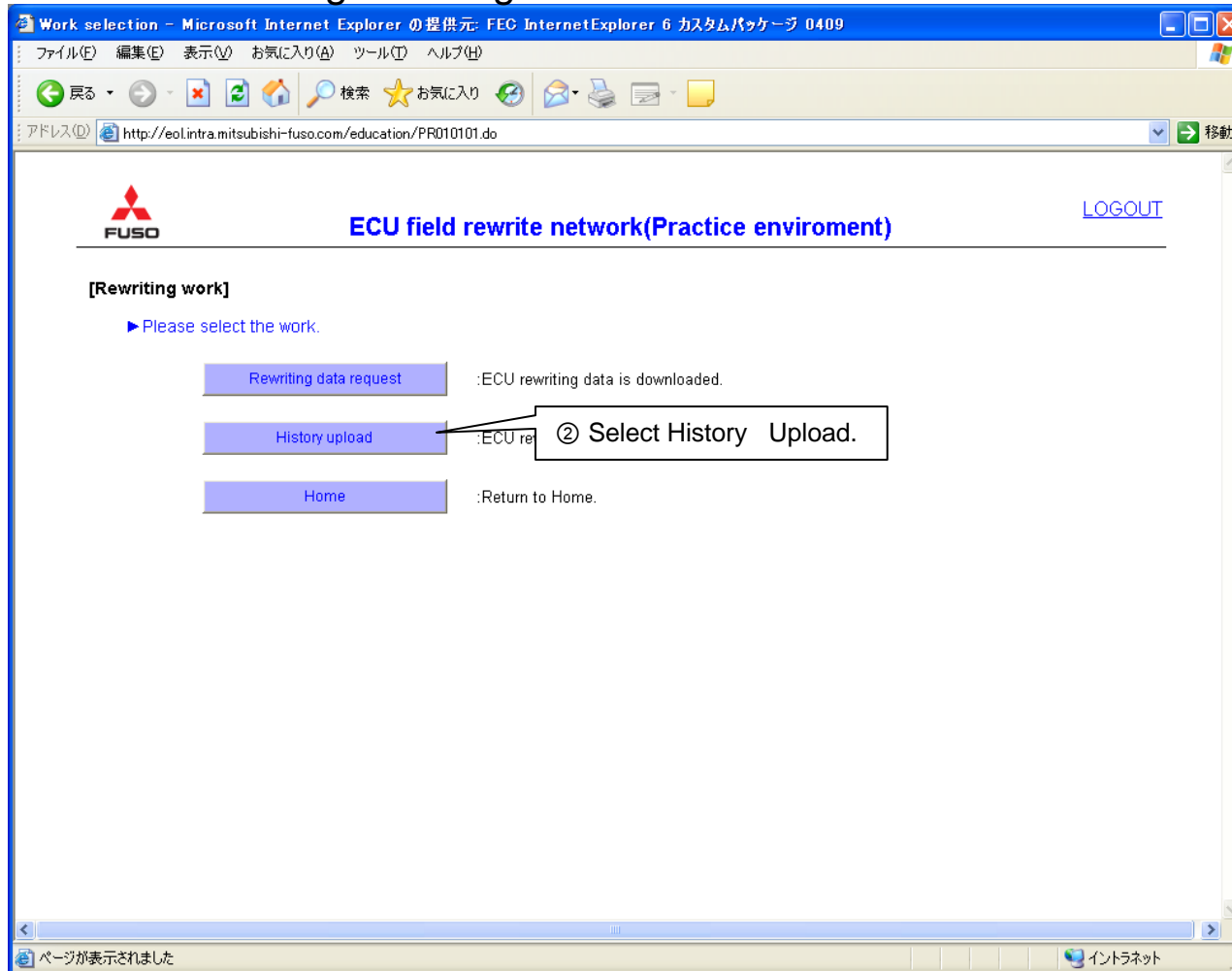
## How to Register Data to be Written

Window: Top page



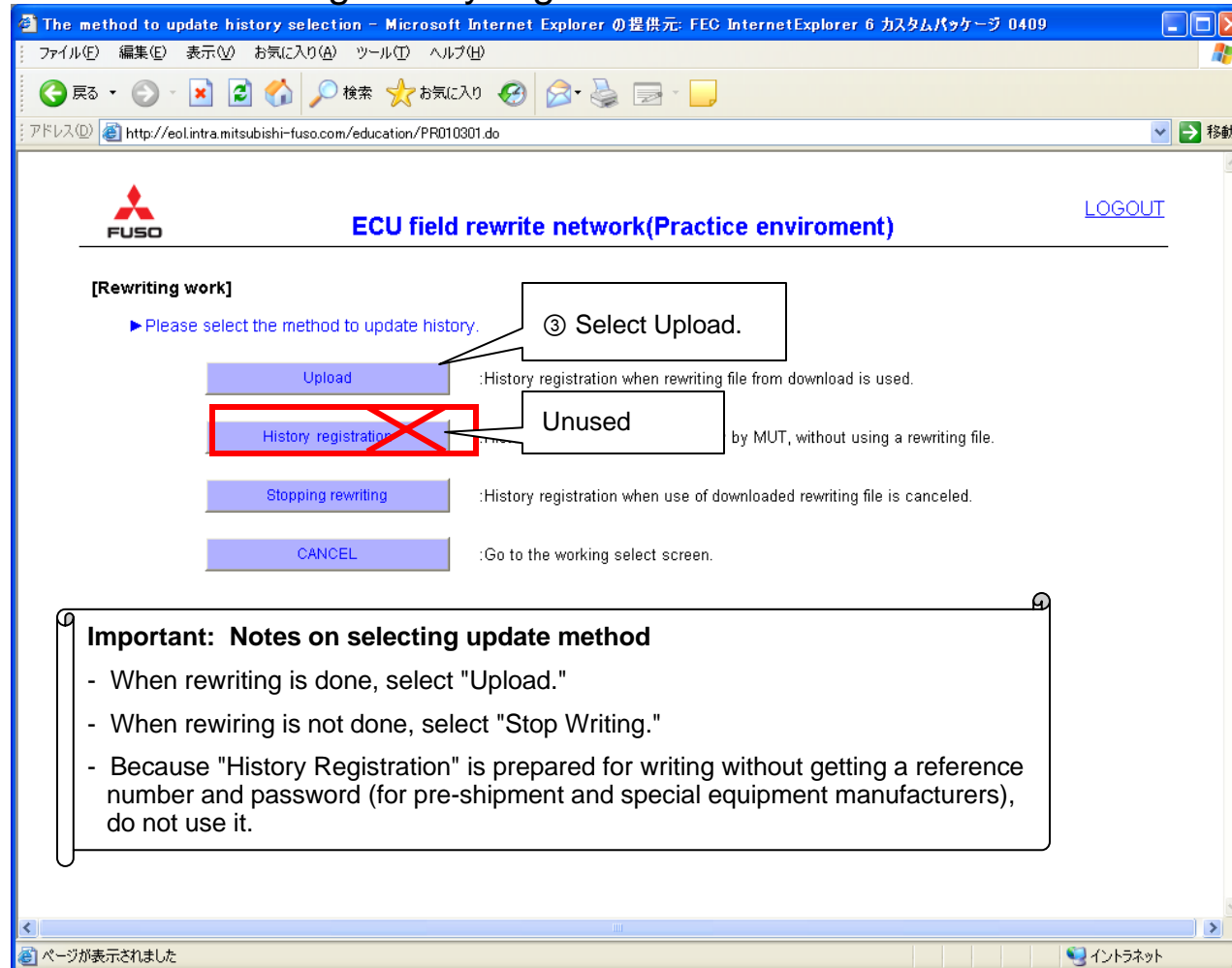
## How to Register Data to be Written

Window: Selecting rewriting work



## How to Register Data to be Written

Window: Selecting history registration method



**[Rewriting work]**

▶ Please select the method to update history.

③ Select Upload.

Upload :History registration when rewriting file from download is used.

~~History registration~~ Unused :History registration when use of downloaded rewriting file is canceled.

Stopping rewriting :History registration when use of downloaded rewriting file is canceled.

CANCEL :Go to the working select screen.

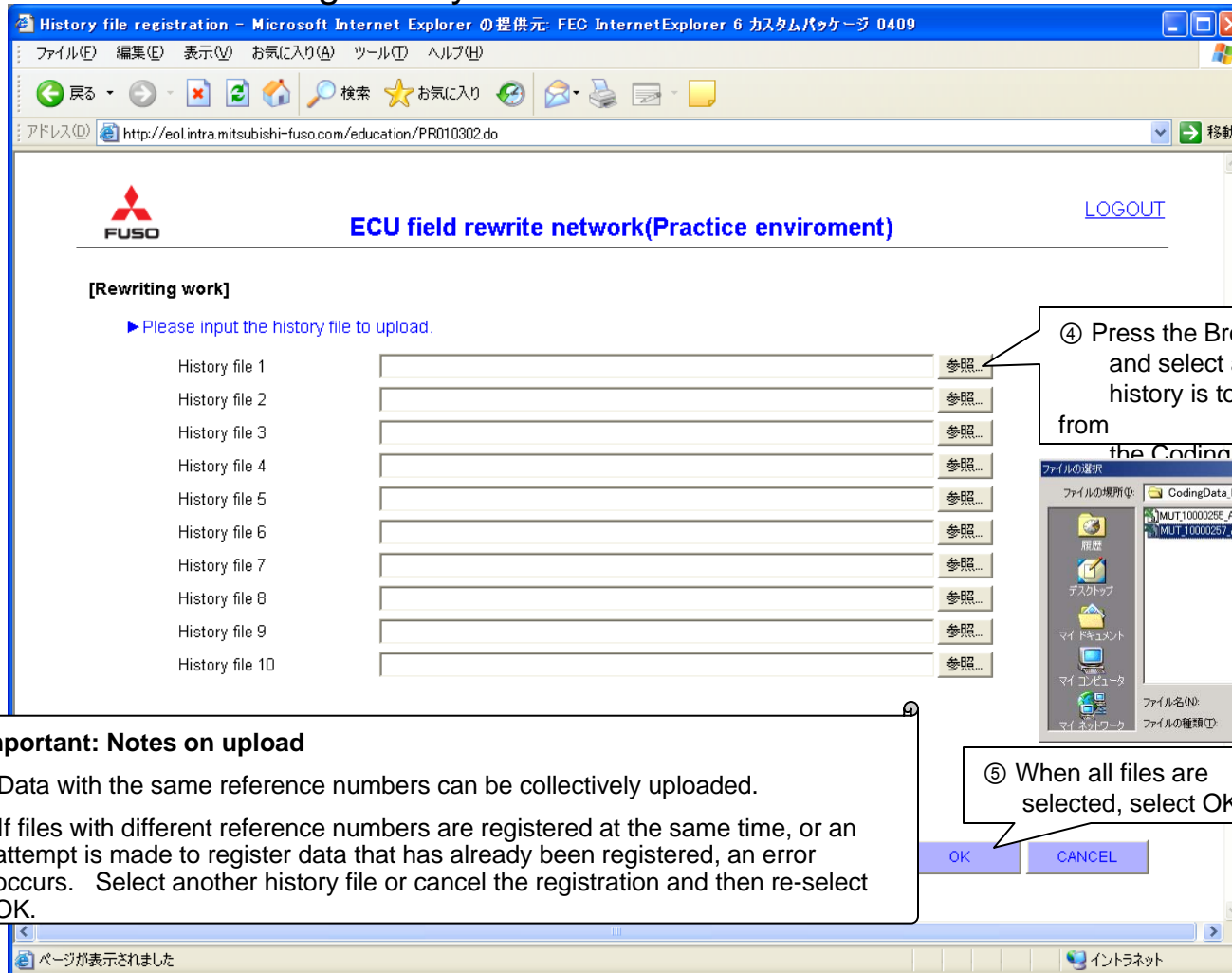
**Important: Notes on selecting update method**

- When rewriting is done, select "Upload."
- When rewiring is not done, select "Stop Writing."
- Because "History Registration" is prepared for writing without getting a reference number and password (for pre-shipment and special equipment manufacturers), do not use it.



## How to Register Data to be Written

Window: Selecting history file



**[Rewriting work]**

▶ Please input the history file to upload.

History file 1	<input type="text"/>	参照...
History file 2	<input type="text"/>	参照...
History file 3	<input type="text"/>	参照...
History file 4	<input type="text"/>	参照...
History file 5	<input type="text"/>	参照...
History file 6	<input type="text"/>	参照...
History file 7	<input type="text"/>	参照...
History file 8	<input type="text"/>	参照...
History file 9	<input type="text"/>	参照...
History file 10	<input type="text"/>	参照...

**④** Press the Browse... button and select a file whose history is to be registered from the CodingData\_MUT folder

**⑤** When all files are selected, select OK.

OK CANCEL

ページが表示されました

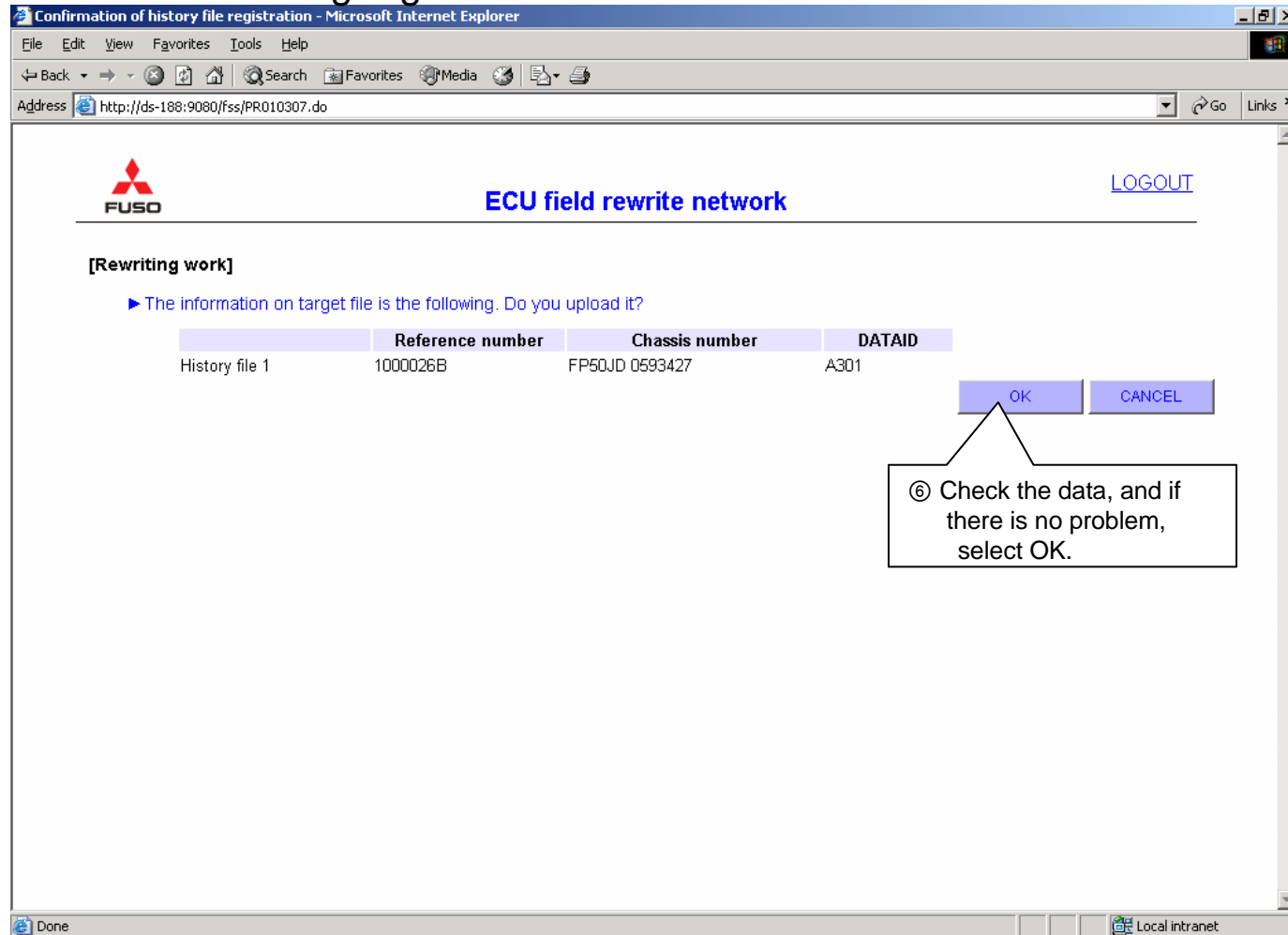
イントラネット

### Important: Notes on upload

- Data with the same reference numbers can be collectively uploaded.
- If files with different reference numbers are registered at the same time, or an attempt is made to register data that has already been registered, an error occurs. Select another history file or cancel the registration and then re-select OK.

## How to Register Data to be Written

Window: Checking registered data



Confirmation of history file registration - Microsoft Internet Explorer

Address: http://ds-188:9080/fss/PR010307.do

**FUSO** **ECU field rewrite network** [LOGOUT](#)

[Rewriting work]

▶ The information on target file is the following. Do you upload it?

	Reference number	Chassis number	DATAID
History file 1	1000026B	FP50JD 0593427	A301

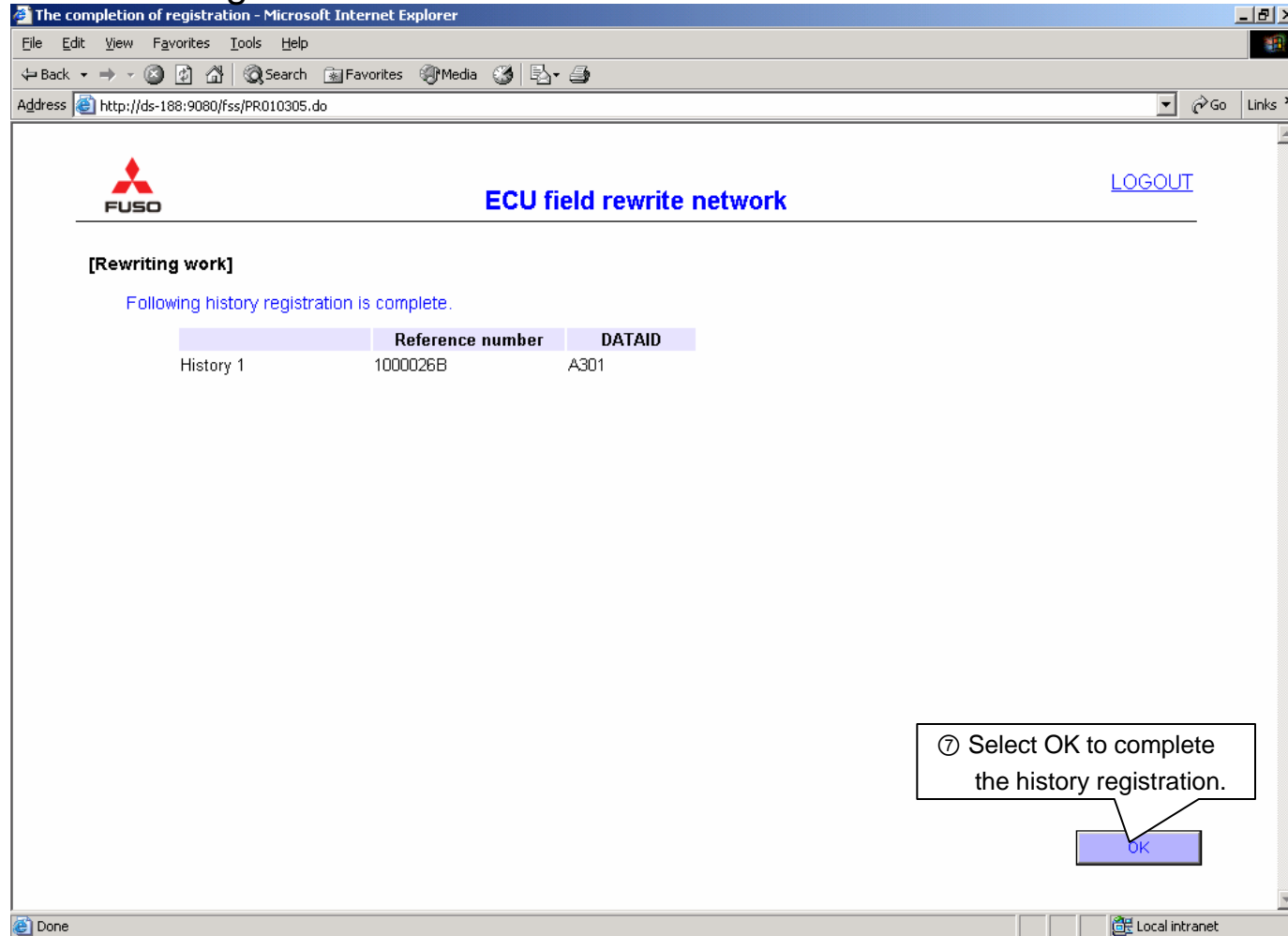
OK CANCEL

⑥ Check the data, and if there is no problem, select OK.

Done Local intranet

## How to Register Data to be Written

Window: Registration end



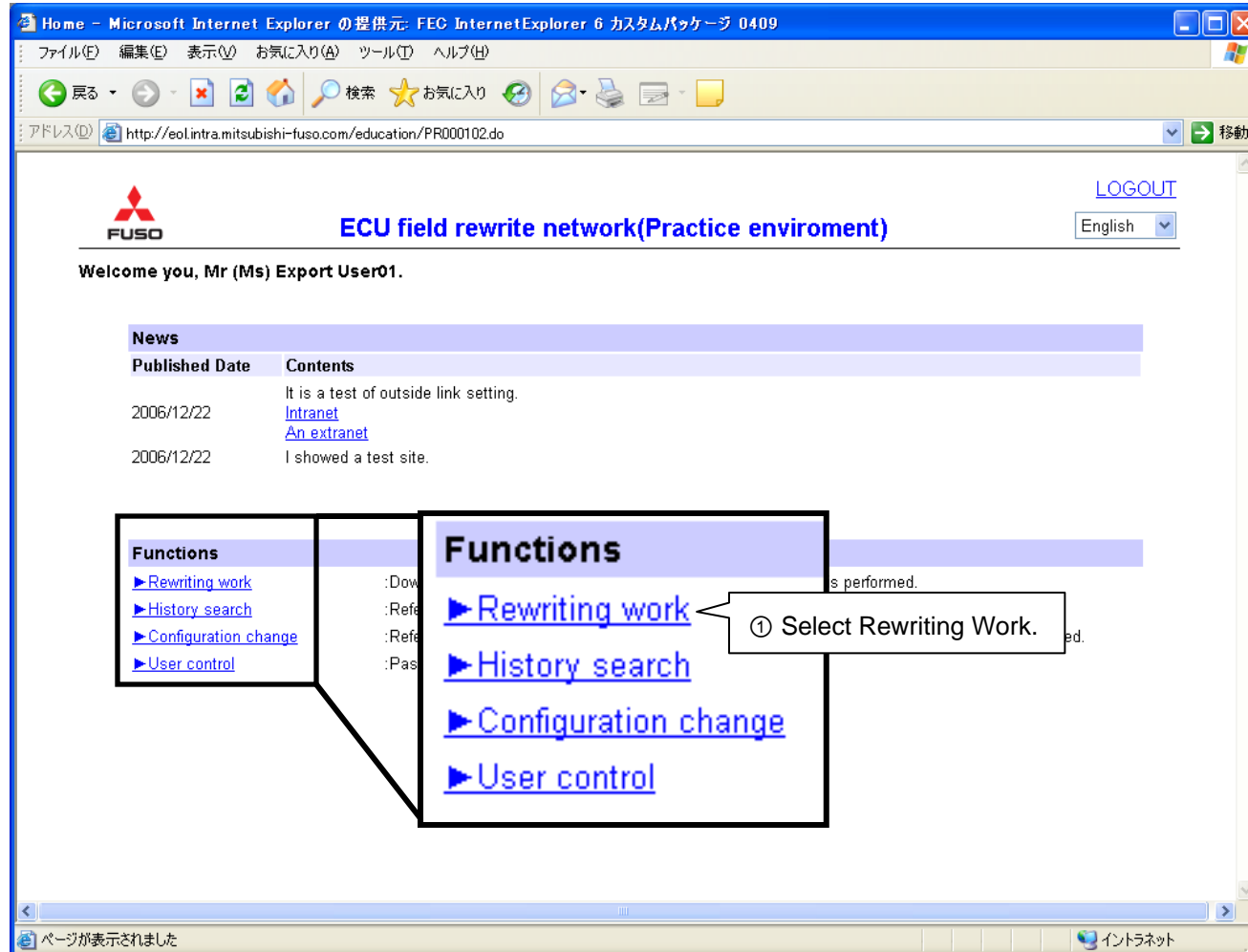
The screenshot shows a Microsoft Internet Explorer browser window titled "The completion of registration - Microsoft Internet Explorer". The address bar shows "http://ds-188:9080/fss/PR010305.do". The page content includes the FUSO logo, the text "ECU field rewrite network", and a "LOGOUT" link. Below this, there is a section "[Rewriting work]" with the message "Following history registration is complete." and a table:

	Reference number	DATAID
History 1	1000026B	A301

A callout box with a circled '7' contains the text "Select OK to complete the history registration." and points to an "OK" button.

## How to Quit Rewriting

Window: Top page




Home - Microsoft Internet Explorer の提供元: FEC Internet Explorer 6 カスタムパッケージ 0409

ファイル(E) 編集(E) 表示(V) お気に入り(A) ツール(T) ヘルプ(H)

戻る 検索 お気に入り

アドレス(D) http://eoLintra.mitsubishi-fuso.com/education/PR000102.do 移動

 **ECU field rewrite network(Practice enviroment)** [LOGOUT](#) English

Welcome you, Mr (Ms) Export User01.

**News**

Published Date	Contents
2006/12/22	It is a test of outside link setting. <a href="#">Intranet</a> <a href="#">An extranet</a>
2006/12/22	I showed a test site.

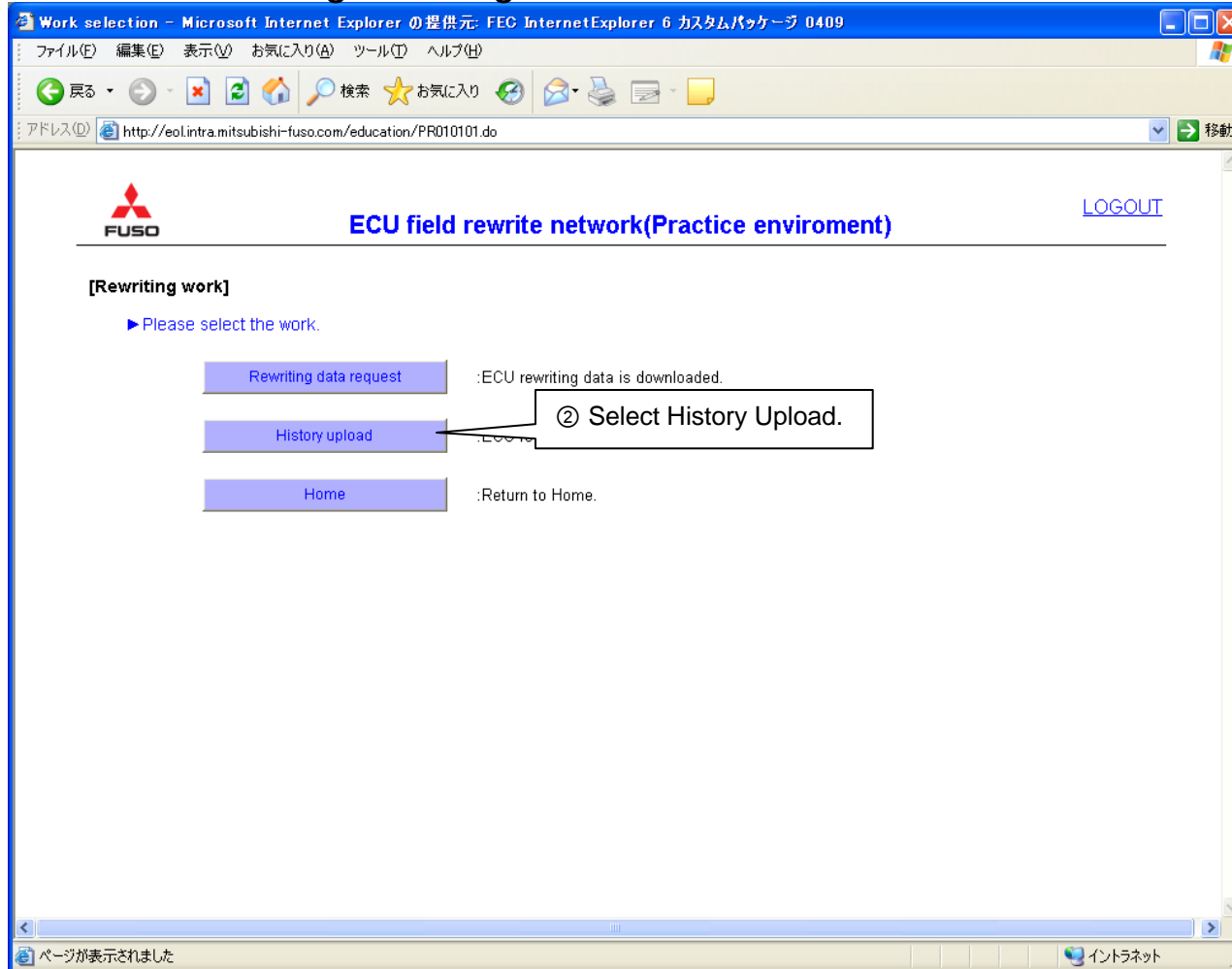
**Functions**

- ▶ [Rewriting work](#)
- ▶ [History search](#)
- ▶ [Configuration change](#)
- ▶ [User control](#)

① Select Rewriting Work.

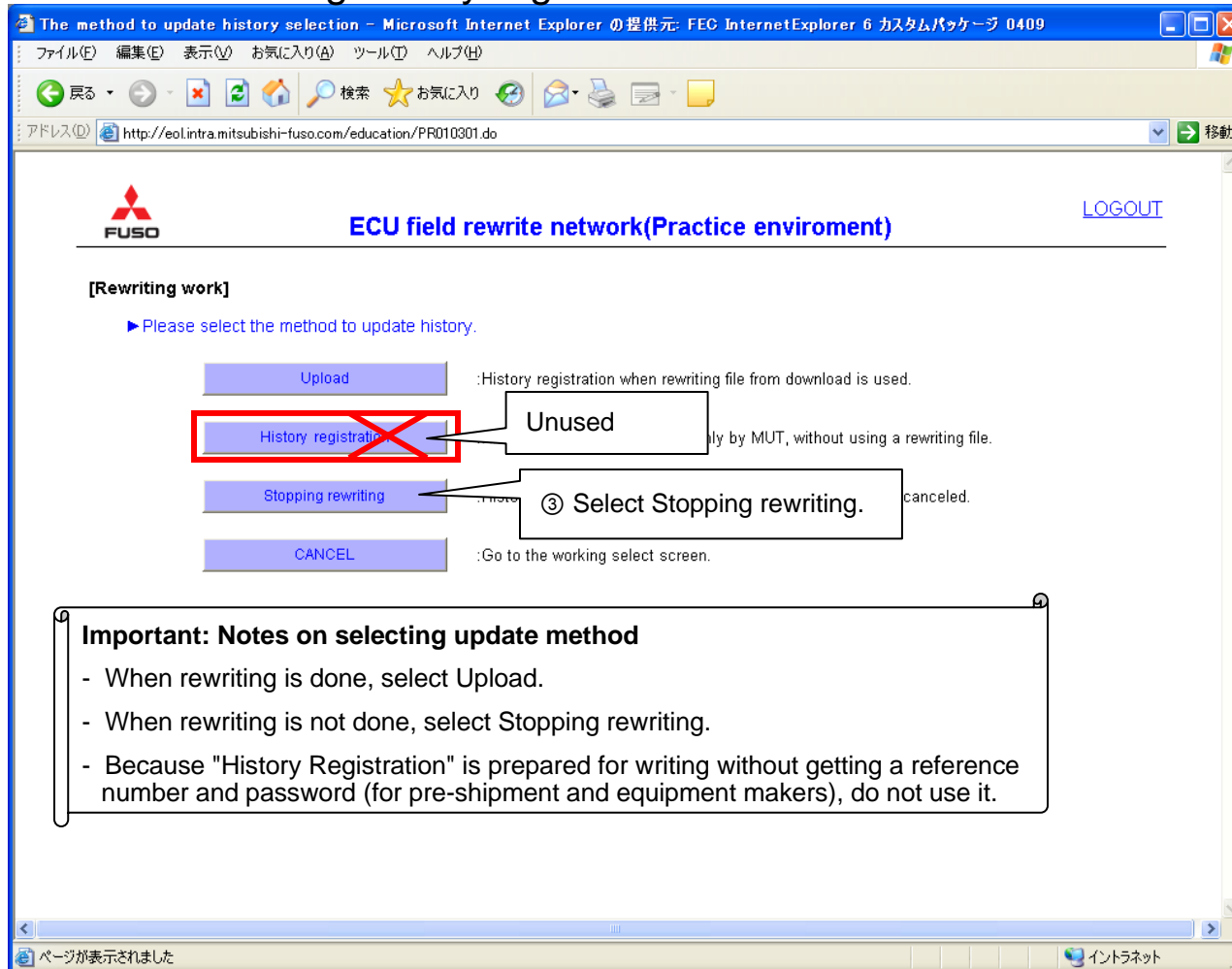
## How to Quit Rewriting

Window: Selecting rewriting work



## How to Quit Rewriting

Window: Selecting history registration method



**Upload** :History registration when rewriting file from download is used.

**History registration** Unused :History registration when rewriting file from download is used.

**Stopping rewriting** ③ Select Stopping rewriting. canceled.

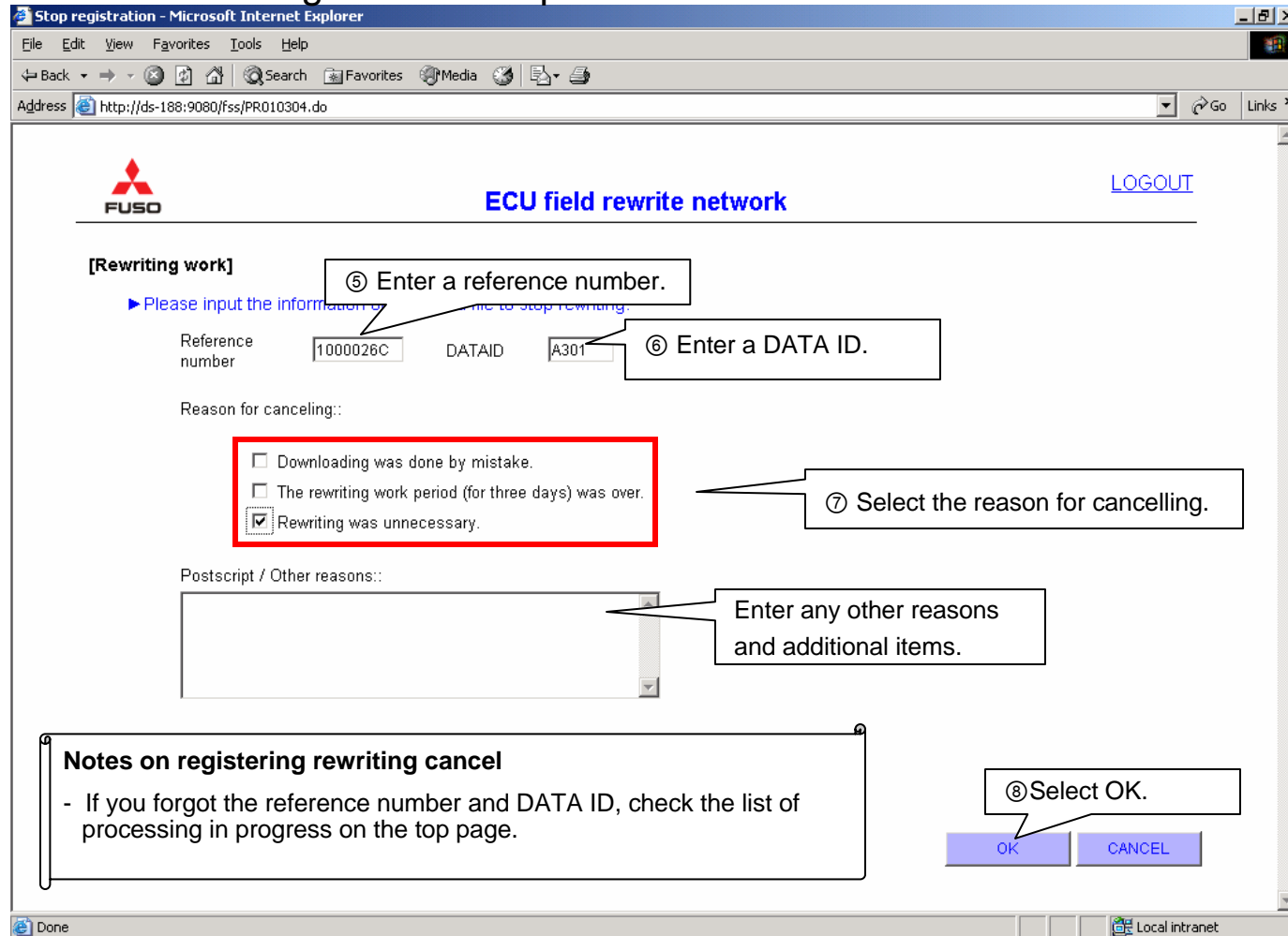
**CANCEL** :Go to the working select screen.

**Important: Notes on selecting update method**

- When rewriting is done, select Upload.
- When rewriting is not done, select Stopping rewriting.
- Because "History Registration" is prepared for writing without getting a reference number and password (for pre-shipment and equipment makers), do not use it.

## How to Quit Rewriting

Window: Entering reason for quit



**Stop registration - Microsoft Internet Explorer**

File Edit View Favorites Tools Help

Back Forward Stop Search Favorites Media Print

Address <http://ds-188:9080/fss/PR010304.do> Go Links >>

**FUSO** **ECU field rewrite network** [LOGOUT](#)

**[Rewriting work]**

▶ Please input the information to stop rewriting.

Reference number:  DATAID:

Reason for cancelling:

- Downloading was done by mistake.
- The rewriting work period (for three days) was over.
- Rewriting was unnecessary.

Postscript / Other reasons:

Enter any other reasons and additional items.

**Notes on registering rewriting cancel**

- If you forgot the reference number and DATA ID, check the list of processing in progress on the top page.

⑤ Enter a reference number.

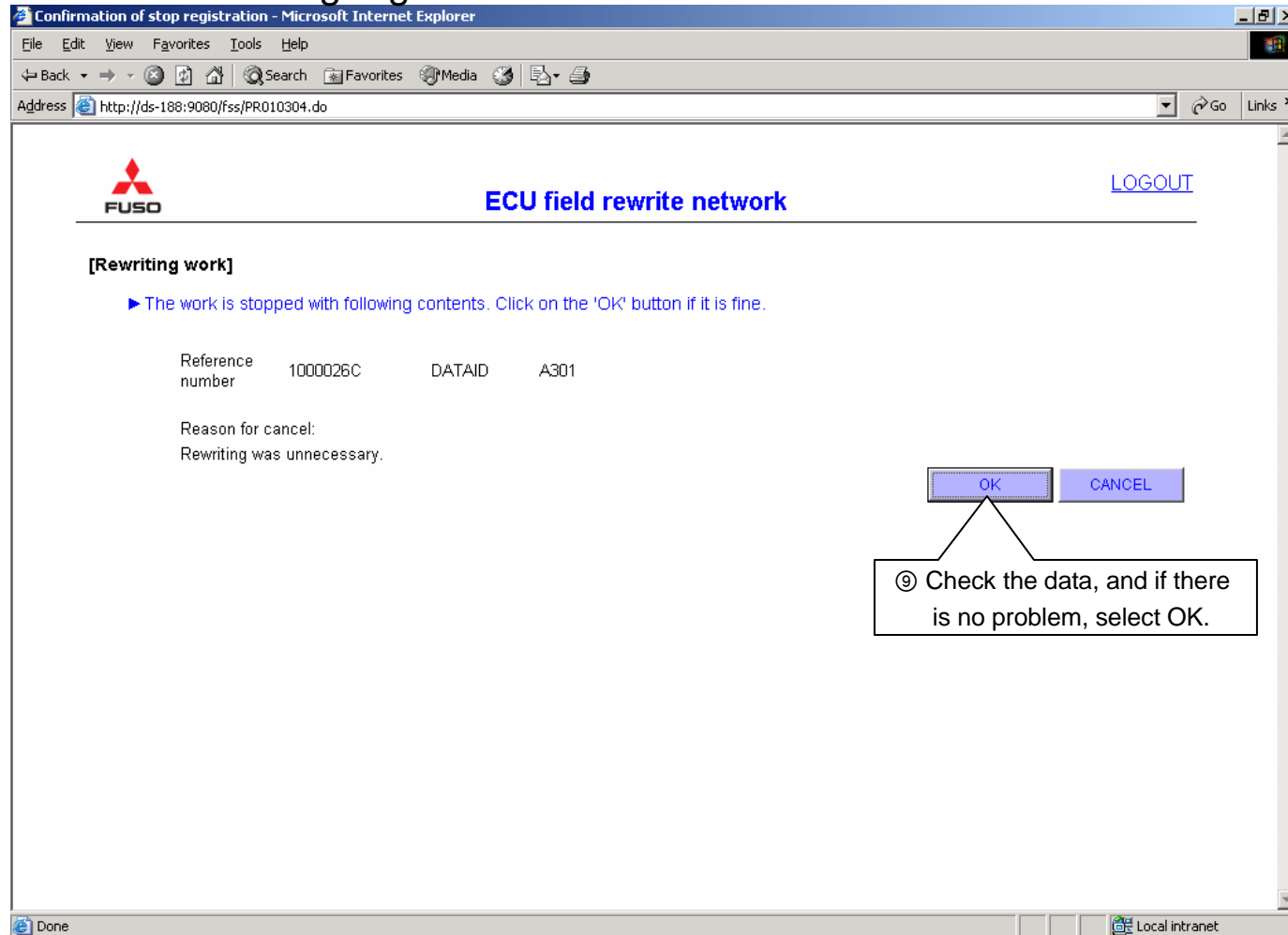
⑥ Enter a DATA ID.

⑦ Select the reason for cancelling.

⑧ Select OK.

## How to Quit Rewriting

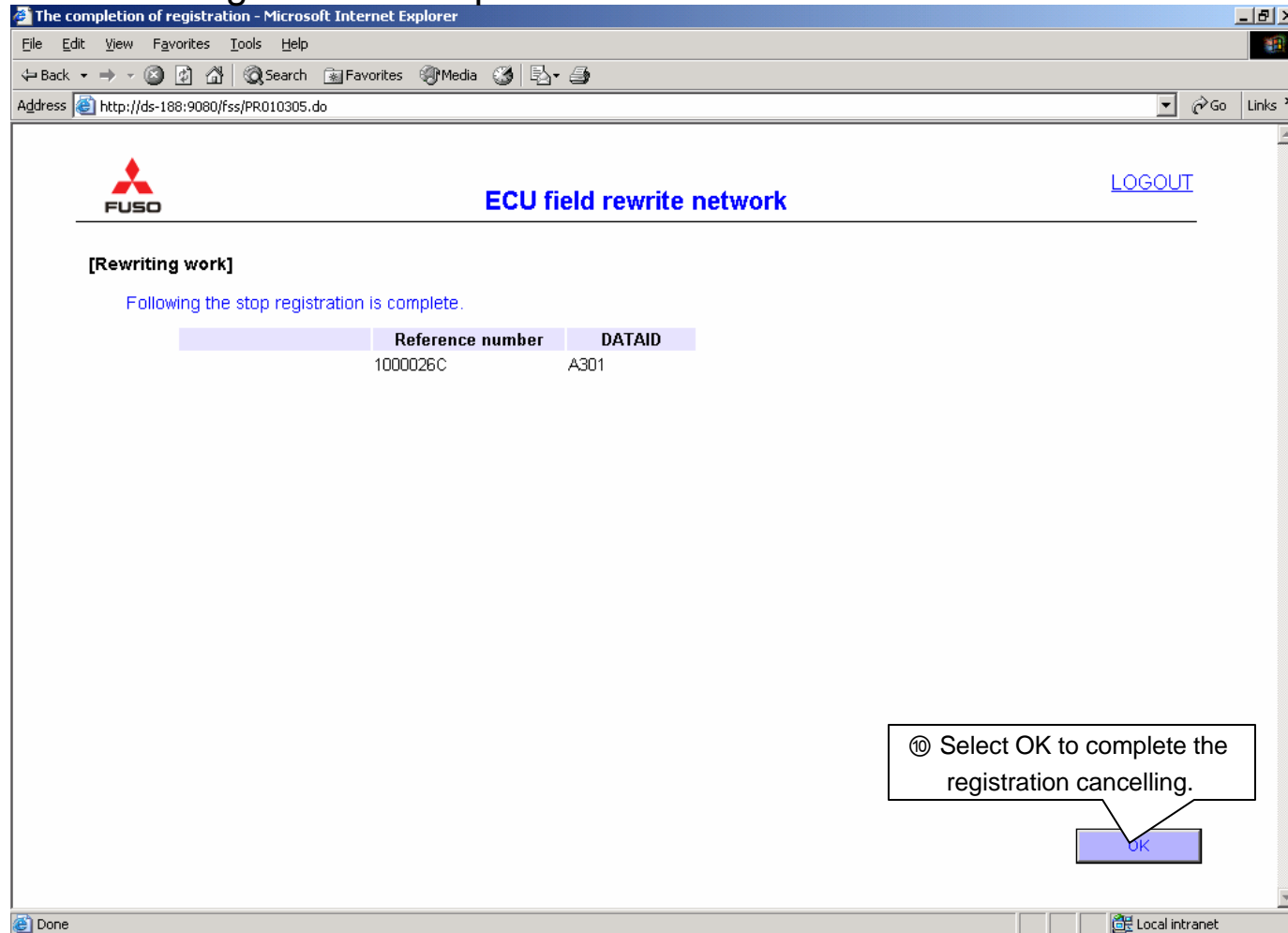
Window: Checking registered data





## How to Quit Rewriting

Window: Registration completion



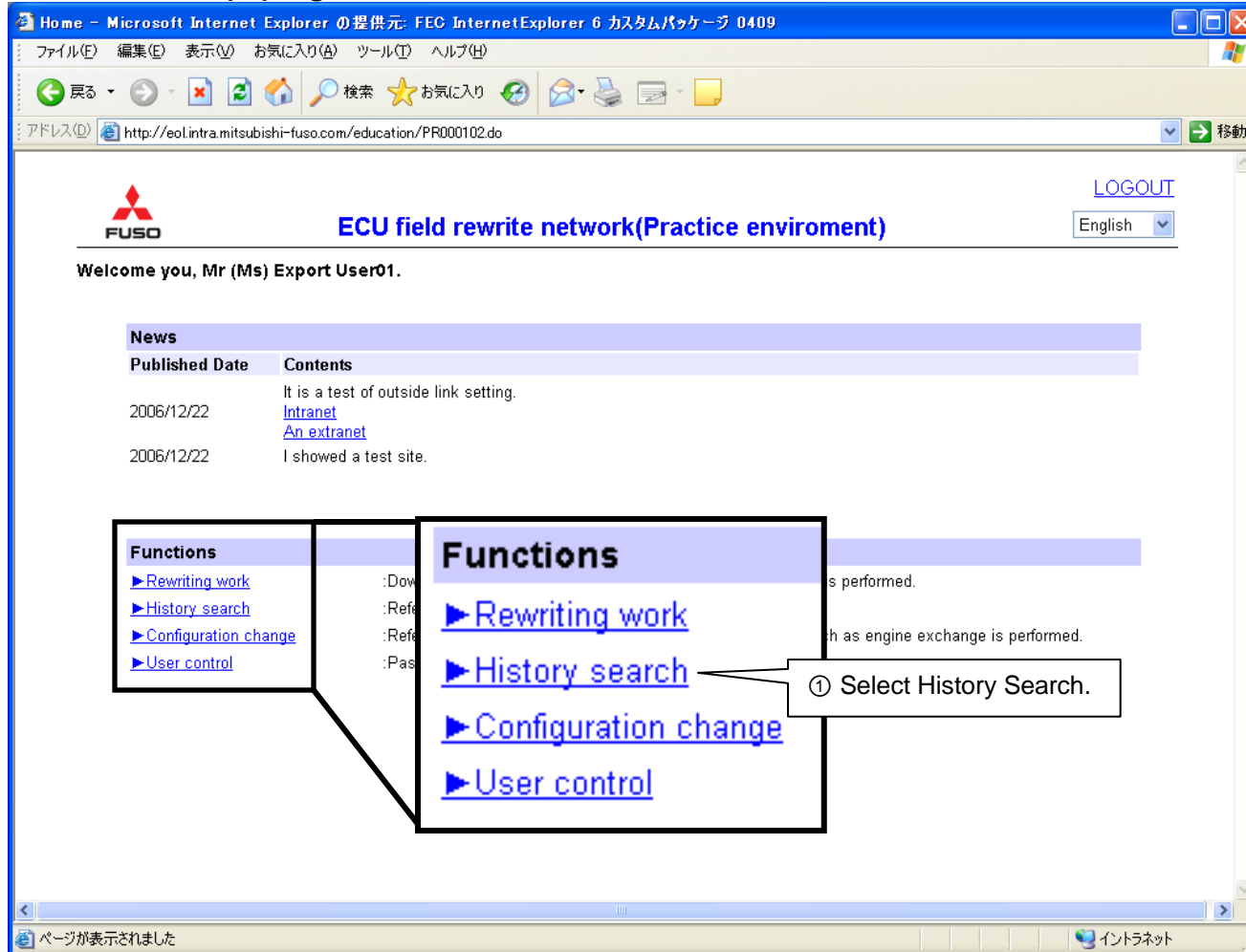
The screenshot shows a Microsoft Internet Explorer window titled "The completion of registration - Microsoft Internet Explorer". The address bar shows "http://ds-188:9080/fss/PR010305.do". The page content includes the FUSO logo, the text "ECU field rewrite network", and a "LOGOUT" link. Below this, there is a section titled "[Rewriting work]" with the message "Following the stop registration is complete." and a table:

Reference number	DATAID
1000026C	A301

A callout box with the text "Select OK to complete the registration cancelling." points to an "OK" button.

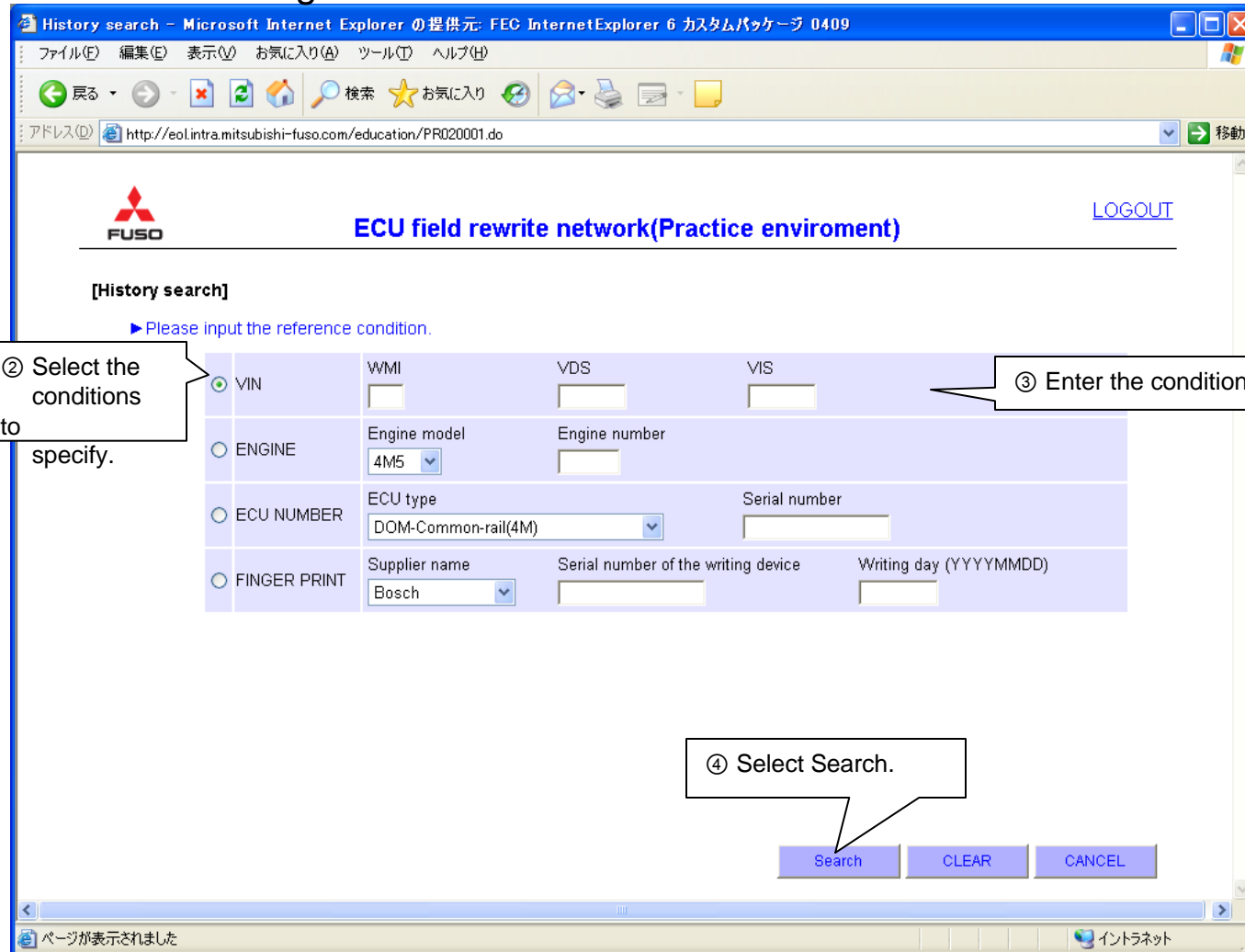
## How to View Rewriting History

Window: Top page



## How to View Rewriting History

Window: Entering reference conditions



**[History search]**  
▶ Please input the reference condition.

<input checked="" type="radio"/> VIN	WMI	VDS	VIS
<input type="radio"/> ENGINE	Engine model 4M5	Engine number	
<input type="radio"/> ECU NUMBER	ECU type DOM-Common-rail(4M)	Serial number	
<input type="radio"/> FINGER PRINT	Supplier name Bosch	Serial number of the writing device	Writing day (YYYYMMDD)

② Select the conditions to specify.

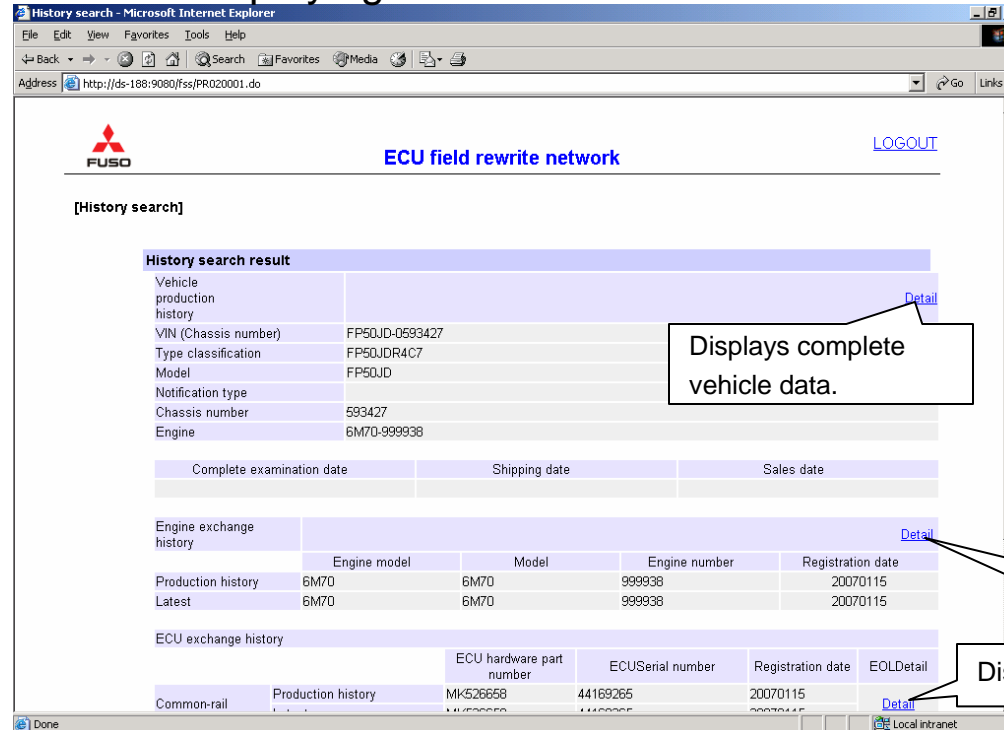
③ Enter the conditions.

④ Select Search.

Search CLEAR CANCEL

## How to View Rewriting History

Window: Displaying search results



**History search result**

Vehicle production history				<a href="#">Detail</a>
VIN (Chassis number)	FP5QJD-0593427			
Type classification	FP5QJDR4C7			
Model	FP5QJD			
Notification type				
Chassis number	593427			
Engine	6M70-999938			

Complete examination date	Shipping date	Sales date

**Engine exchange history**

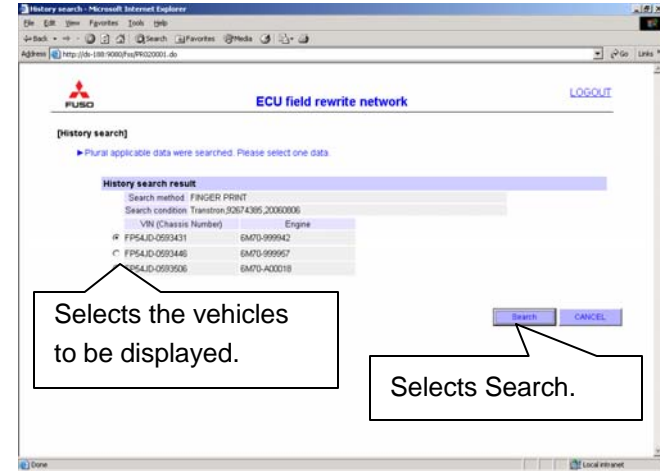
Production history	Engine model	Model	Engine number	Registration date
Latest	6M70	6M70	999938	20070115
	6M70	6M70	999938	20070115

**ECU exchange history**

Production history	ECU hardware part number	ECU Serial number	Registration date	EOLDetail
Common-rail	MK526658	44169265	20070115	<a href="#">Detail</a>

When two or more vehicles meet the conditions



**History search result**

Search method: FINGER PRINT  
Search condition: Transition:92674365,20000006

VIN (Chassis Number)	Engine
FP54ID-0593431	6M70-999942
FP54ID-0593446	6M70-999957
FP54ID-0593506	6M70-A00018

Selects the vehicles to be displayed.

Selects Search.

Displays engine data.

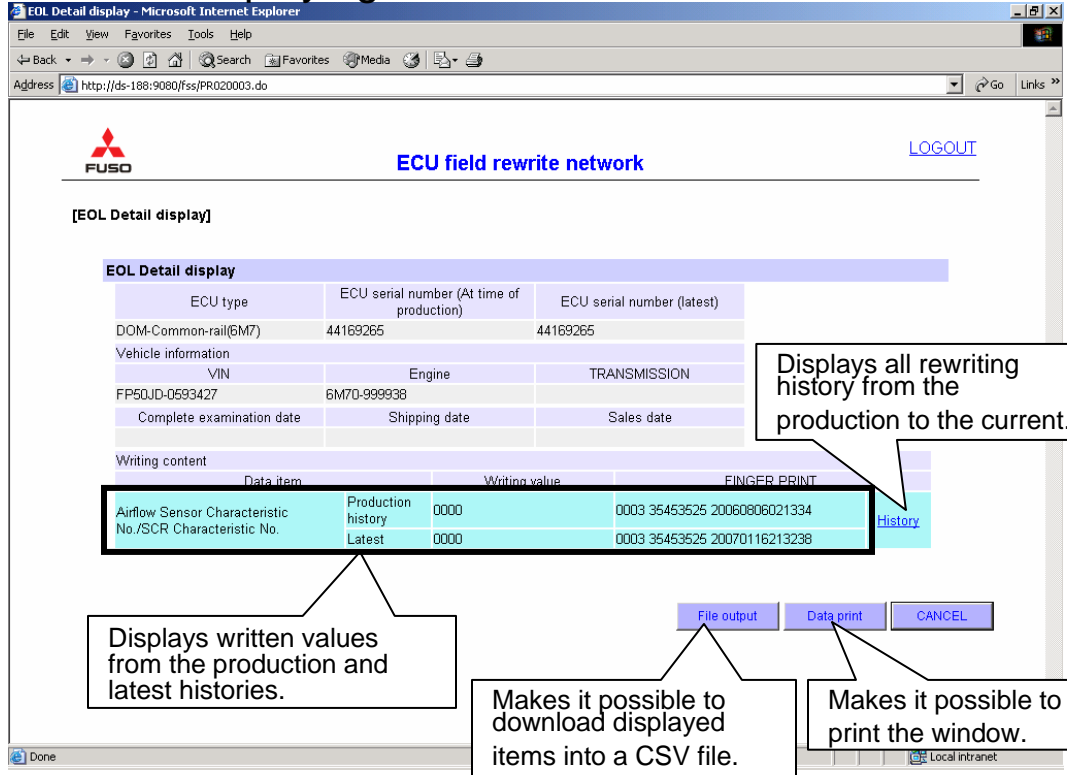
Displays rewriting history.

### • Notes on each data display

- Only the display of rewritten histories is supported.
- Detailed display is to be supported by obtaining complete vehicle, engine and transmission data or by link.

## How to View Rewriting History

Window: Displaying ECU details



**ECU field rewrite network** [LOGOUT](#)

[EOL Detail display]

**EOL Detail display**

ECU type	ECU serial number (At time of production)	ECU serial number (latest)
DOM-Common-rail(GM7)	44169265	44169265

Vehicle information

VIN	Engine	TRANSMISSION
FP50JD-0593427	6M70-999938	

Complete examination date      Shipping date      Sales date

Writing content

Data item	Writing value	FINGER PRINT
Airflow Sensor Characteristic No./SCR Characteristic No.	0000	0003 35453525 20060806021334
	0000	0003 35453525 20070116213238

[History](#)

File output    Data print    CANCEL

Done      Local intranet

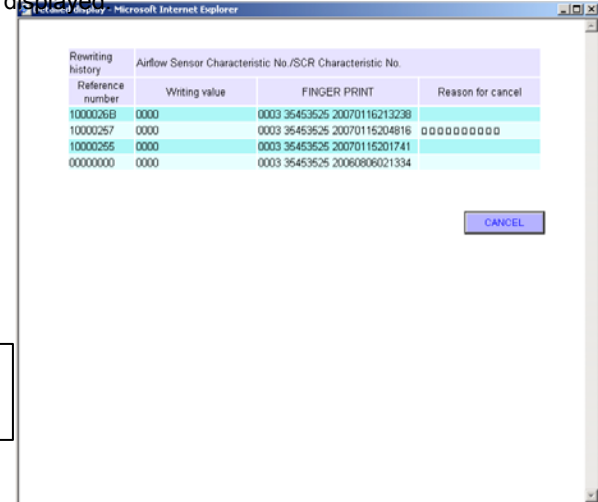
Displays all rewriting history from the production to the current.

Displays written values from the production and latest histories.

Makes it possible to download displayed items into a CSV file.

Makes it possible to print the window.

The rewriting history from the production to the current is displayed.



Reference number	Writing value	FINGER PRINT	Reason for cancel
10000269	0000	0003 35453525 20070116213238	
10000257	0000	0003 35453525 20070115204816	oooooooooo
10000256	0000	0003 35453525 20070115201741	
00000000	0000	0003 35453525 20060806021334	

CANCEL