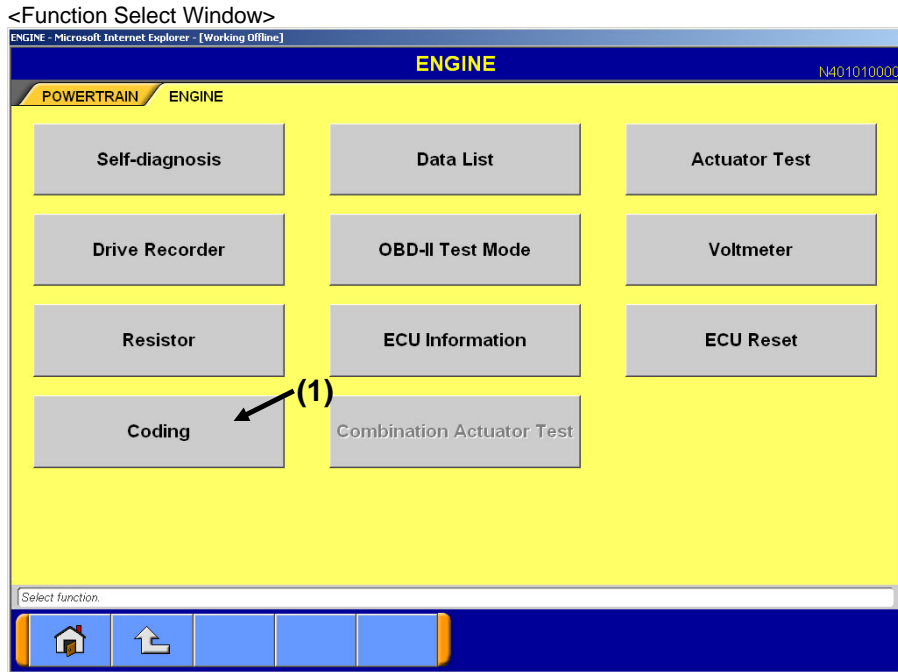
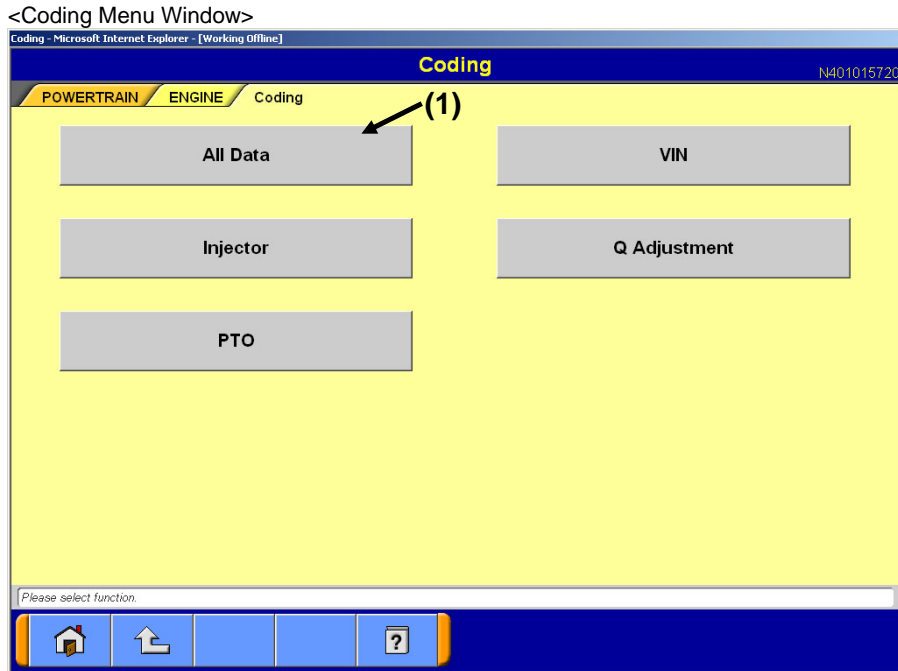


Writing Procedure using All Data Writing



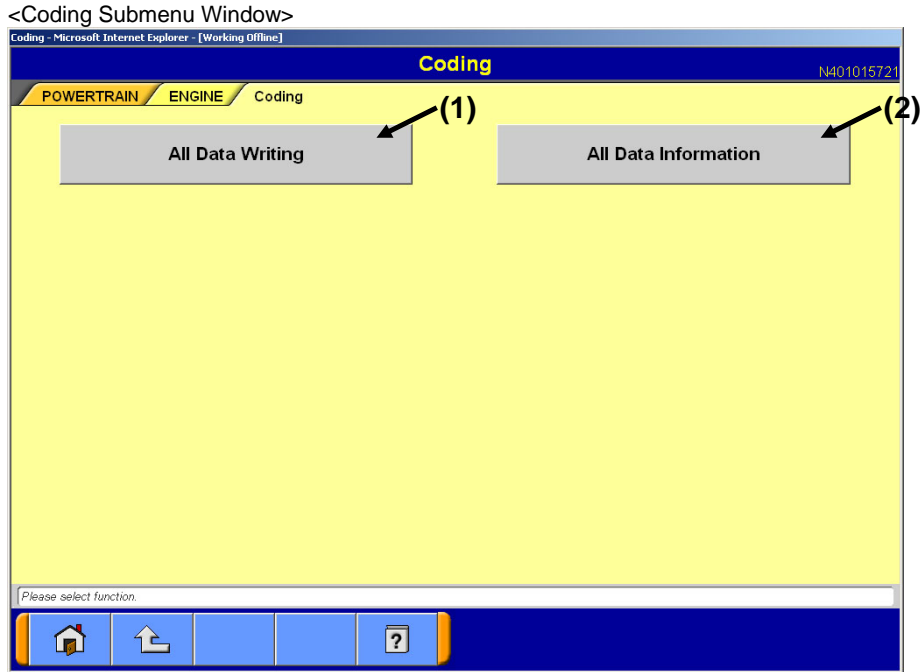
Window 1

- Press "Coding" button (Window 1:(1)) to proceed to the Coding Menu Window (Window 2).



Window 2

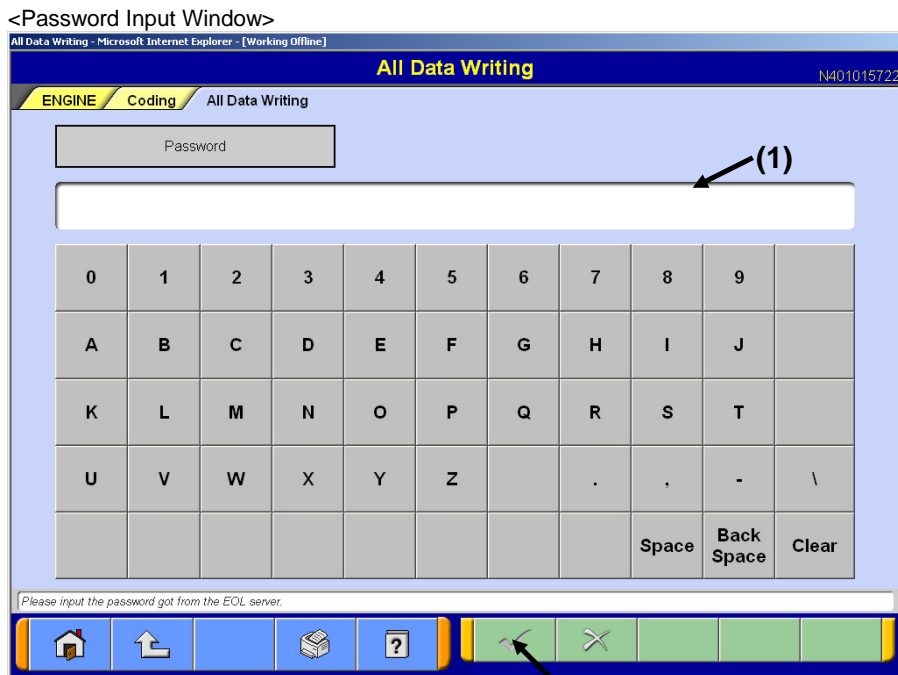
- Press "All Data" button (Window 2: (1)) to proceed to the Coding Submenu Window (Window 3).



Window 3

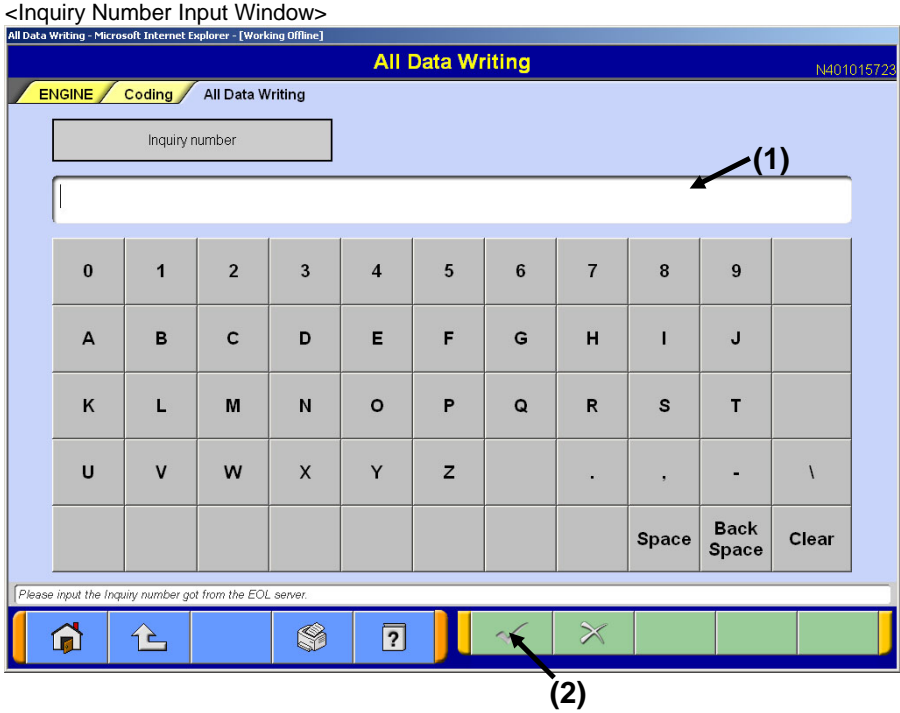
- Press each Function button to proceed to the following windows.

Function button name	Next Window	Remarks
All Data Writing (Window 3: (1))	Password Input Window (Window 4)	Write all coding data to ECU.
All Data Information (Window 3: (2))	All Data Display Window (Window 11)	Confirm coding related data which is written in ECU.



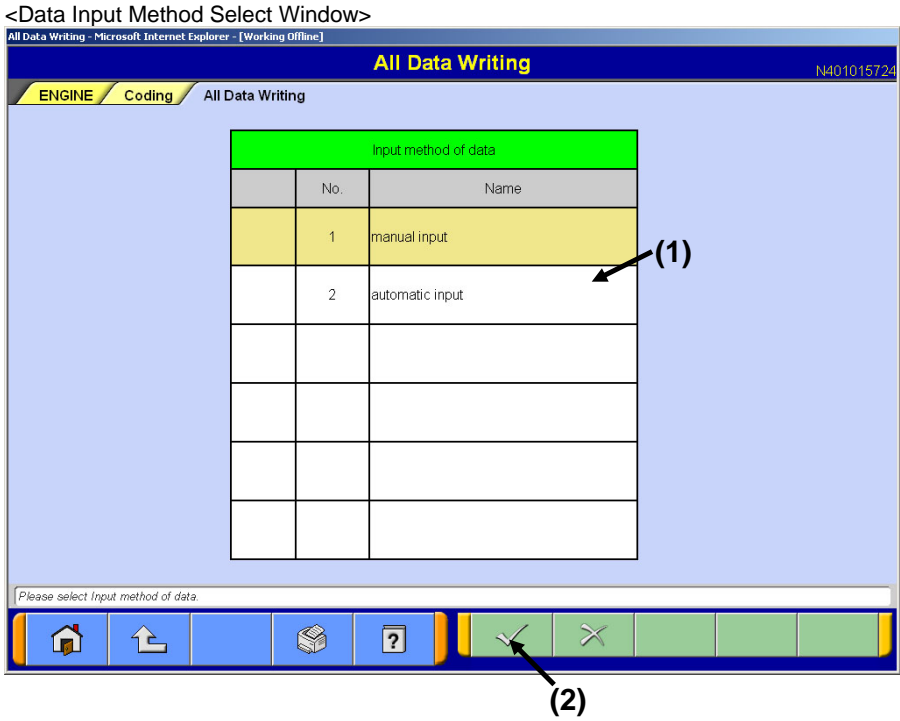
Window 4

- Enter password obtained from EOL server into Password Input field (Window 4: (1)) from the keyboard of MUT Screen or PC main unit.
- Press OK button (Window 4: (2)) to proceed to the Inquiry Number Input Window (Window 5).



Window 5

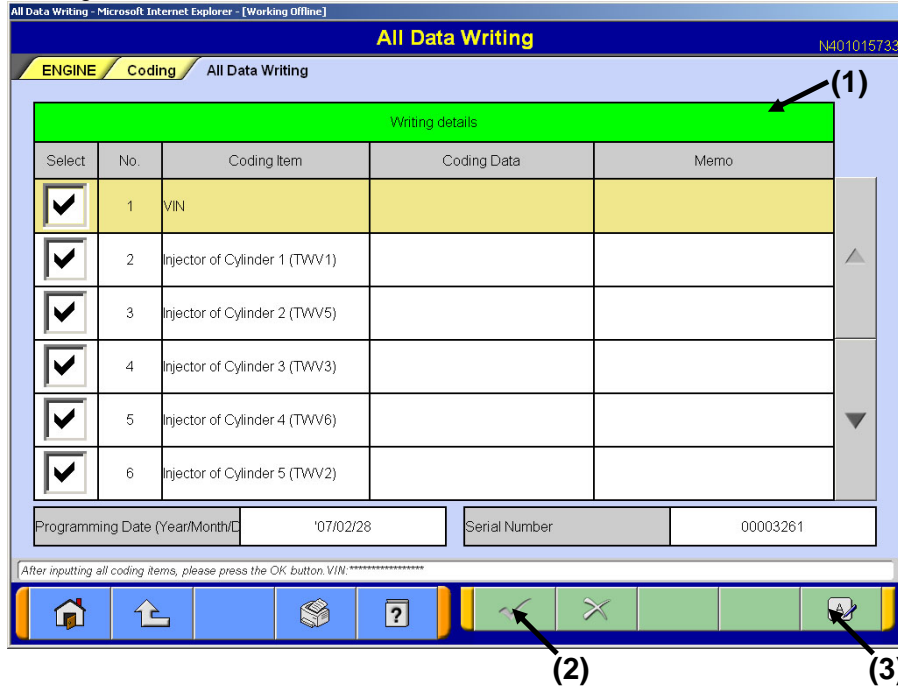
- Enter inquiry number obtained from EOL server into Inquiry Number Input field (Window 5: (1)) from the keyboard of MUT Screen or PC main unit.
- Press OK button (Window 5: (2)) to proceed to the Data Input Method Select Window (Window 6).



Window 6

- Select "Automatic Input" (Window 6: (1)) and press OK button (Window 6: (2)) to proceed to the Coding Contents Confirmation Window (Window 7).

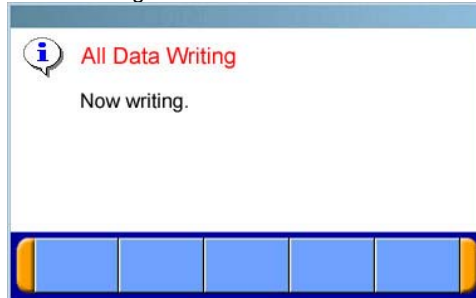
<Coding Contents Confirmation Window>



Window 7

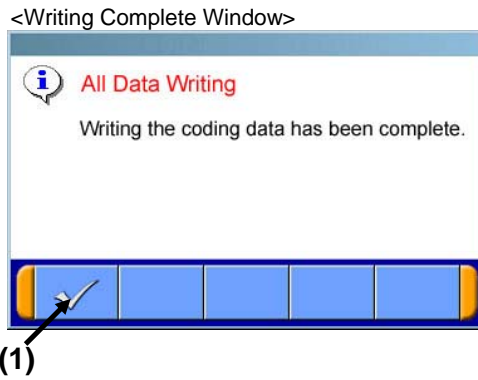
- The writing target item related to diagnosis is displayed.
(The coding data is automatically read from a file and displayed.)
- Uncheck coding Items which are not written.
(All coding Items are checked by default.)
- Press Input Window Call button (Window 7: (3)) to enter "Memo".
(The input of work memo is optional and it needs not be entered.)
- Confirm the writing contents (Window 7: (1)) and press OK button (Window 7: (2)) to display Now Writing Window (Window 8) after Writing Confirmation Window is displayed.

<Now Writing Window>



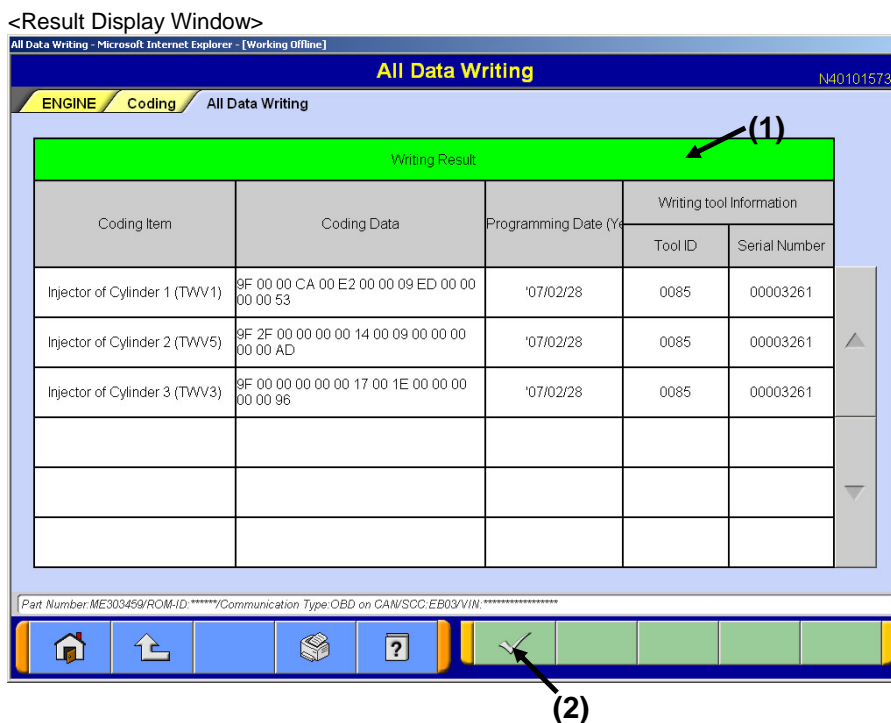
Window 8

- When writing is completed, Writing Complete Window (Window 9) is displayed.



Window 9

- Press OK button (Window 9: (1)) to proceed to Result Display Window (Window 10).



Window 10

- The writing result of coding Items for which the writing result (Window 10: (1)) is checked is displayed. (See below).
 - (1) Value written in ECU
 - (2) Date when rewriting is performed
 - (3) ID of tool with which rewriting was performed (In case of MUT-III, "0085")
 - (4) Serial number of tool with which rewriting was performed (In case of MUT-III, serial number of V.C.I.)
- Press OK button (Window 10: (2)) to return to Coding Submenu Window (Window 3).

<All Data Display Window>

(1)

Vehicle Information				
Coding Item	Coding Data	Programming Date (Year)	Writing tool Information	
			Tool ID	Serial Number
Injector of Cylinder 1 (TWW1)	9F 00 00 CA 00 E2 00 00 09 ED 00 00 00 00 53	'06/10/20	0085	00008338
Injector of Cylinder 2 (TWW5)	9F 2F 00 00 00 00 14 00 09 00 00 00 00 00 AD	'06/10/20	0085	00008338
Injector of Cylinder 3 (TWW3)	9F 00 00 00 00 00 17 00 1E 00 00 00 00 00 96	'06/10/20	0085	00008338
Injector of Cylinder 4 (TWW6)	9F 00 00 00 00 00 10 00 17 00 13 00 00 00 8B	'06/10/20	0085	00008338
Injector of Cylinder 5 (TWW2)	9F 2F 00 00 00 D8 00 00 00 E5 E3 00 00 00 41	'06/10/20	0085	00008338
Injector of Cylinder 6 (TWW4)	9F 2F 28 00 00 D6 18 00 15 00 00 00 00 00 43	'06/10/20	0085	00008338

Part Number ME303459/ROM-ID:*****/Communication Type:OBD on CAN/SCG:EB03

Window 11

- The following data which is written in ECU is displayed.
 - (1) Value which is written in ECU
 - (2) Date when rewriting was performed
 - (3) ID of tool with which rewriting was performed (In case of MUT-III, "0085")
 - (4) Serial number of tool with which rewriting was performed (In case of MUT-III, serial number of V.C.I.)