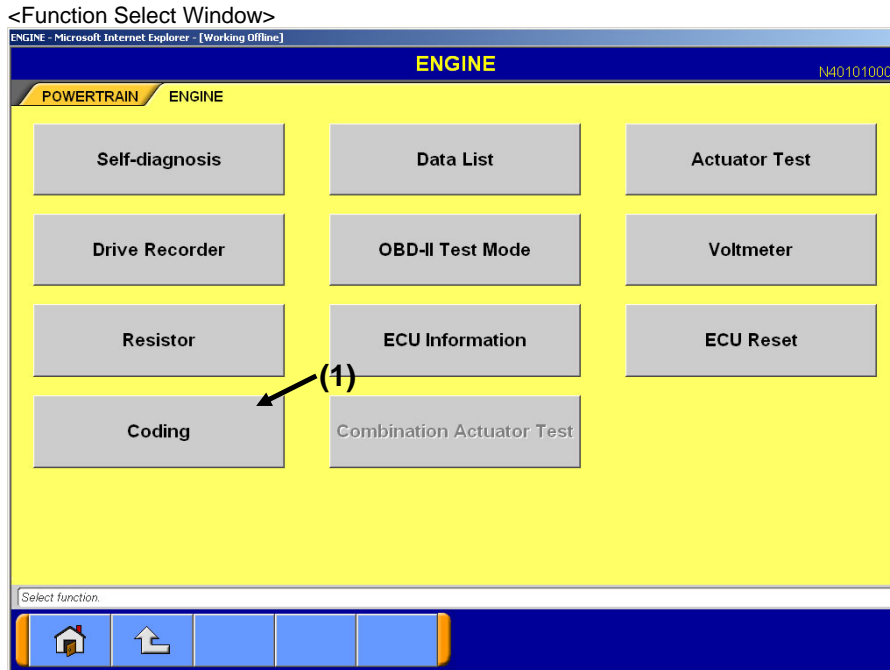
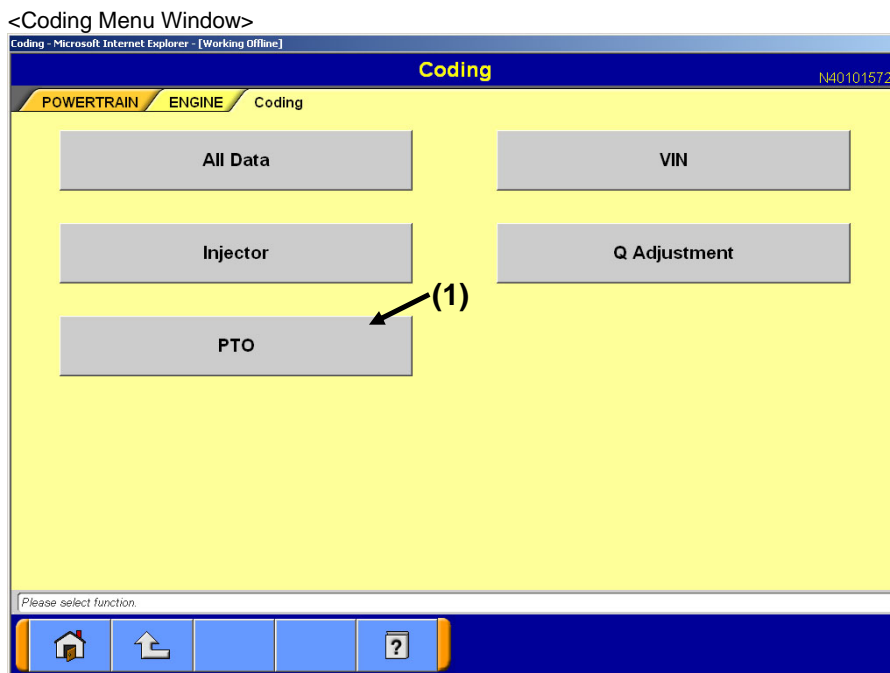


PTO Idle Rotation Number Writing Procedure



Window 1

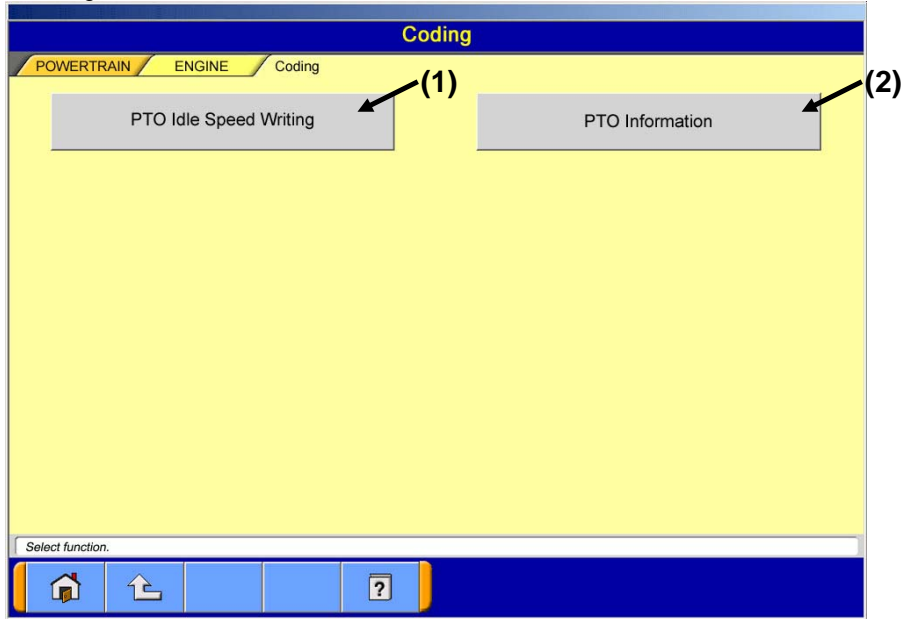
- Press "Coding" button Window 1: (1)) in Function Select Window to proceed to the Coding Menu Window (Window 2).



Window 2

- Press "PTO" button (Window 2: (1)) to proceed to the Coding Submenu Window (Window 3).

<Coding Submenu Window>

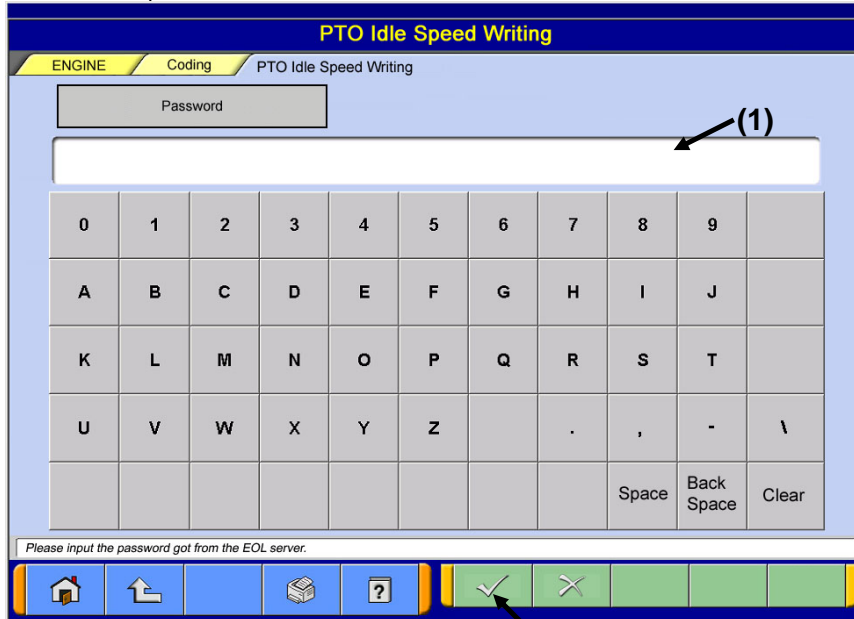


Window 3

· Press each Function button to proceed to the the following windows.

Function button name	NEXT Window	Remarks
PTOI Idle speed Writing (Window 3: (1))	Password Input Window (Window 4)	Write "PTO idle speed" manually/automatically.
PTO Information (Window 3: (2))	PTO Information Display Window (Window 13)	Confirm the PTO information written in ECU (PTO idle rotation number, etc.).

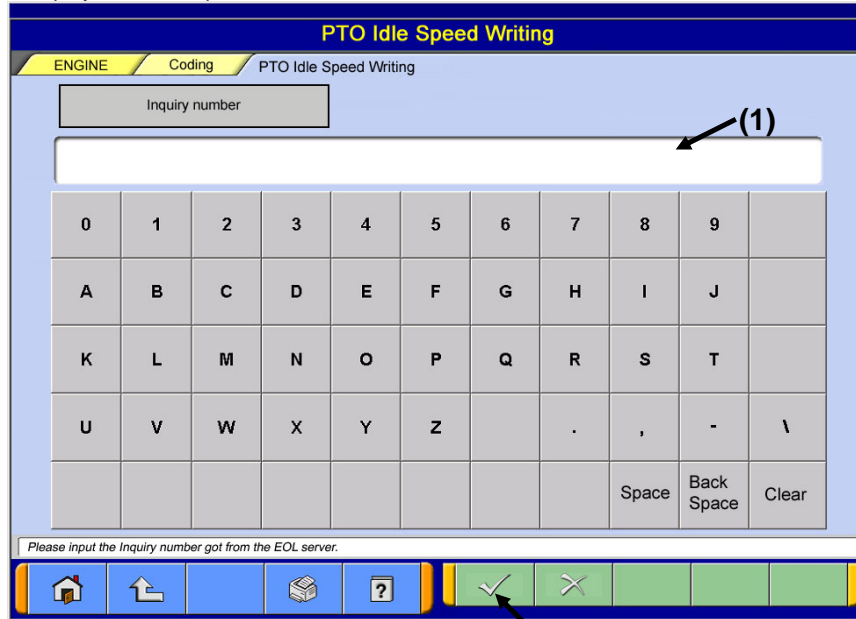
<Password Input Window>



Window 4

- Enter password in Password Input field (Window 4: (1)) from the keyboard of MUT Screen or PC main unit.
- Press OK button (Window 4: (2)) to proceed to the Inquiry Number Input Window (Window 5).

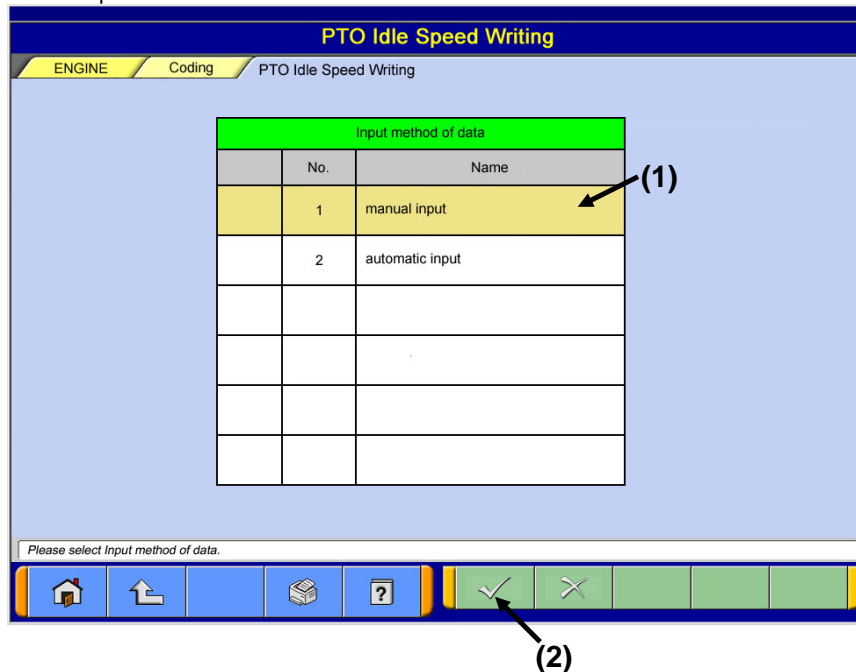
<Inquiry Number Input Window>



Window 5

- Enter inquiry number in Inquiry Number Input field (Window 5: (1)) from the keyboard of MUT Screen or PC main unit.
- Press OK button (Window 5: (2)) to proceed to the Data Input Method Select Window (Window 6).

<Data Input Method Select Window>

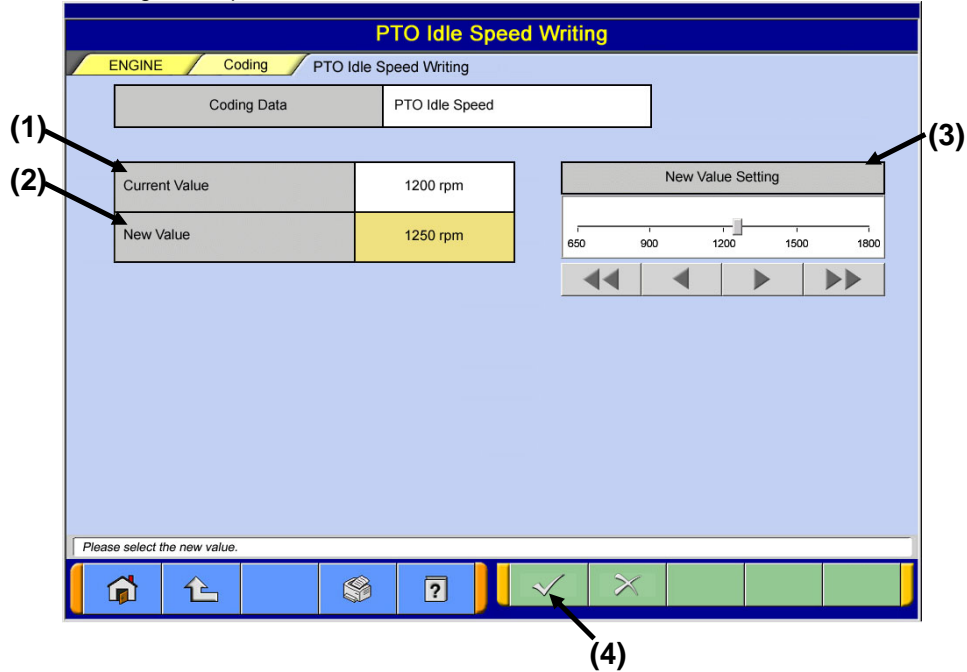


Input method of data	
No.	Name
1	manual input
2	automatic input

Window 6

- Select "Manual input" (Window 6: (1)) and press OK button (Window 6: (2)) to proceed to the Coding Data Input Window (Window 7).

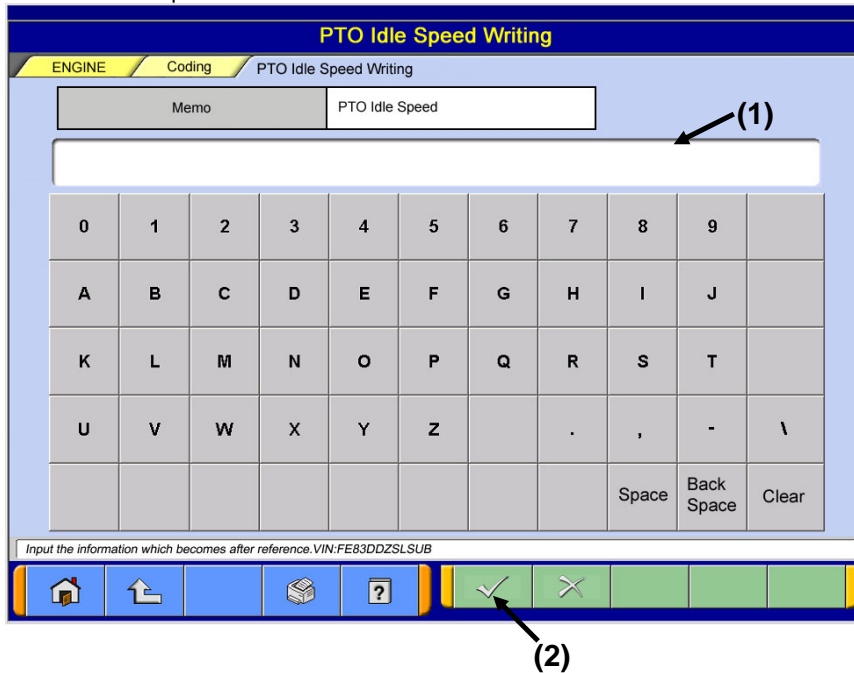
<Coding Data Input Window>



Window 7

- The current value written in "Current Value" (Window 7: (1)) in ECU is displayed.
- The value written in "New Value" (Window 7: (2)) in ECU is displayed.
- Select PTO idle rotation number using the slider in "New Value Setting" (Window 7: (3)) and up/down buttons.
- Press OK button (Window 7: (4)) to proceed to the Work Memo Input Window (Window 8).

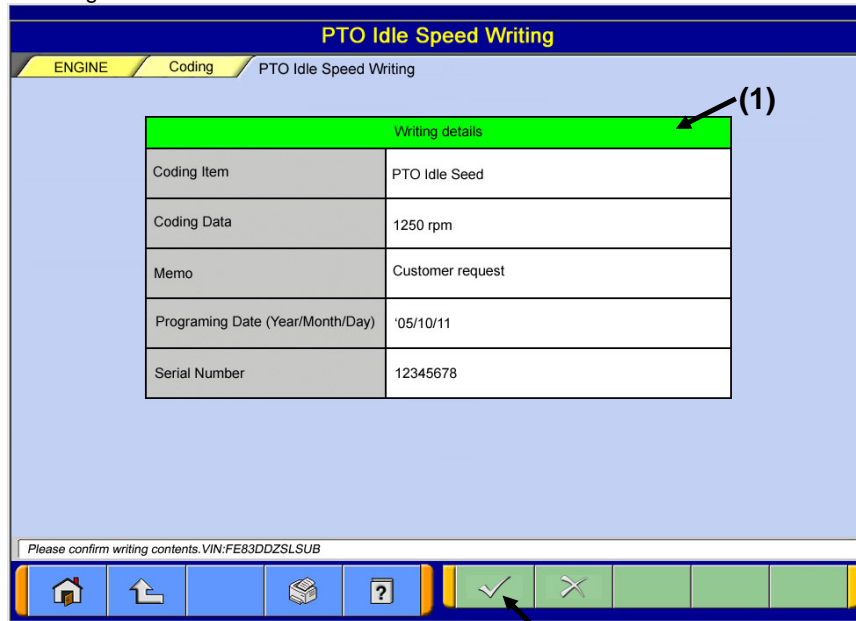
<Work Memo Input Window>



Window 8

- Enter memo in Work Memo Input field (Window 8: (1)) from the keyboard of MUT Screen or PC main unit, (It can be left blank)
- Press OK button (Window 8: (2)) to proceed to the Coding Contents Confirmation Window (Window 9).

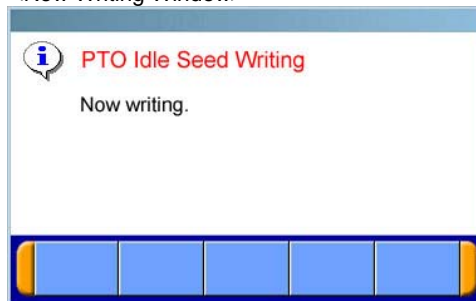
<Coding Contents Confirmation Window>



Window 9

- Confirm the writing contents (Window 9: (1)) and press OK button (Window 9: (2)) to display Now Writing Window (Window 10) after Writing Confirmation Window is displayed.

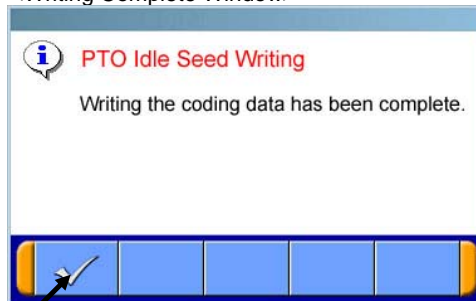
<Now Writing Window>



Window 10

- When writing is completed, Writing Complete Window (Window 11) is displayed.

<Writing Complete Window>

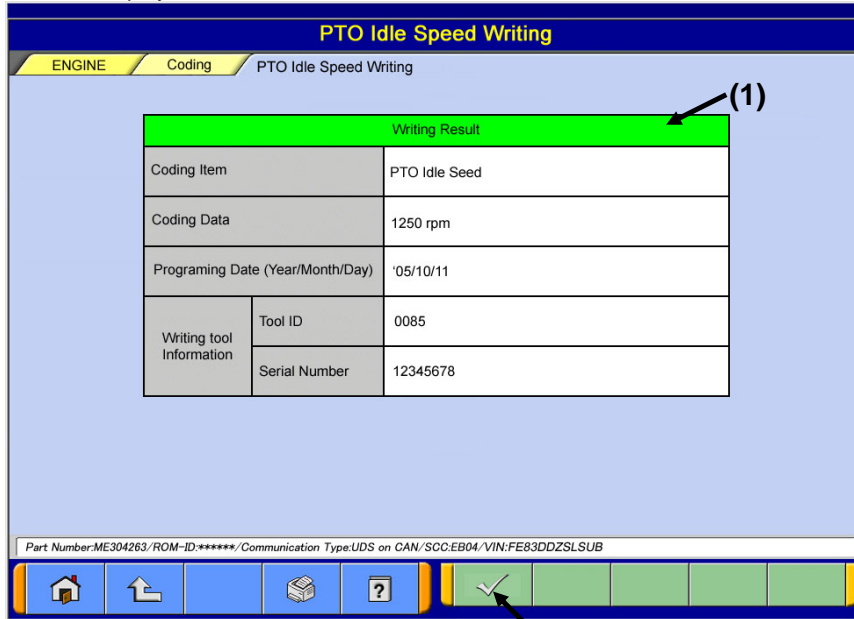


(1)

Window 11

- Press OK button (Window 11: (1)) to proceed to the Result Display Window (Window 12).

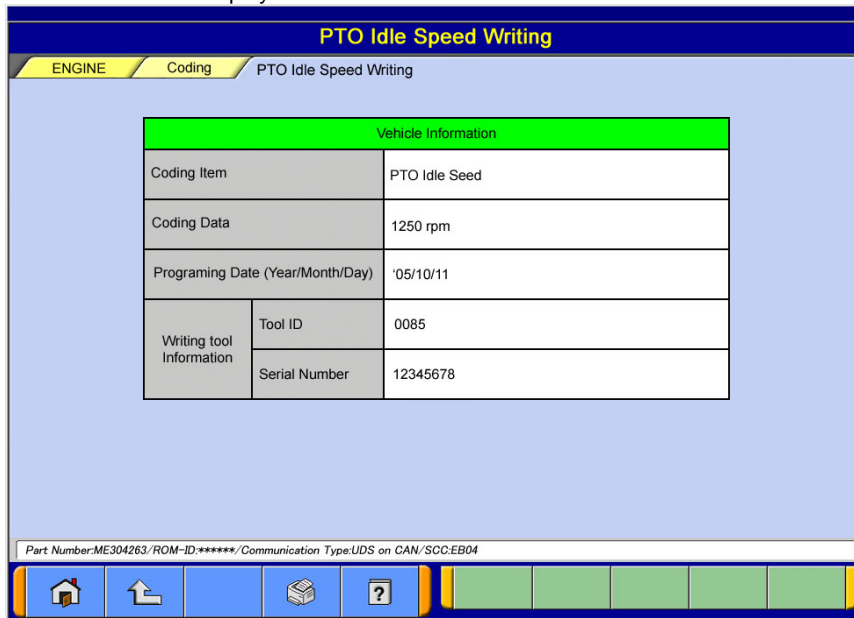
<Result Display Window>



Window 12

- Writing result is displayed in Writing Result Window (Window 12: (1)).
- Press OK button (Window 12: (2)) to return to Coding Submenu Window (Window 3).

<PTO Information Display Window>



Window 13

- The "PTO idle rotation number" which is written in ECU is displayed.