

General Information

Analysis of the door window removal and installation in our shop facilities indicates that the procedures in the Sterling 360 Workshop Manual are not the most efficient or effective way to perform this procedure. Please use these procedures instead. The workshop manual will be updated for the 2008 model year.

Removal

1. Remove the lower door trim panel from the door. See **Fig. 1**.
2. Remove the power window switch assembly from its slot in the lower door trim panel.
3. Remove the ashtray from its slot in the upper door trim panel. See **Fig. 2**.
4. Remove the interior door handle cover from the upper door trim panel.

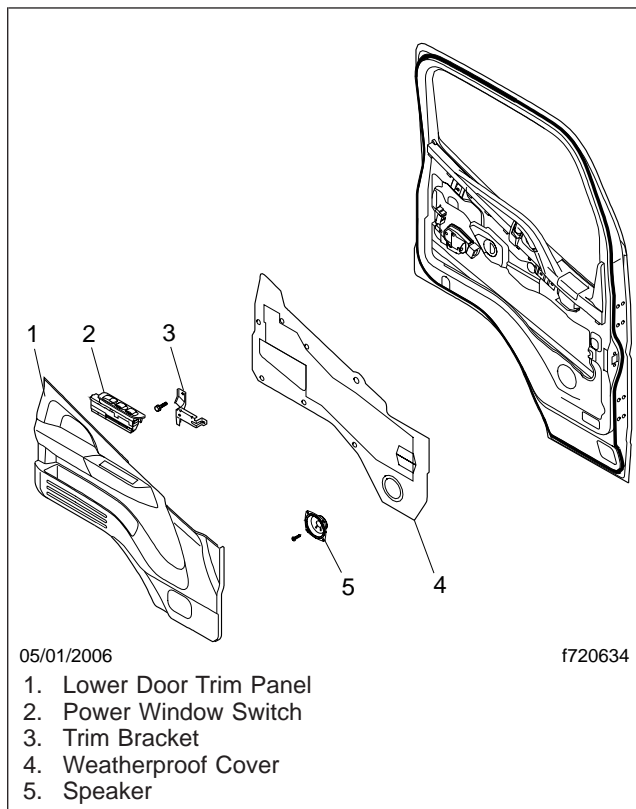


Fig. 1, Lower Door Trim

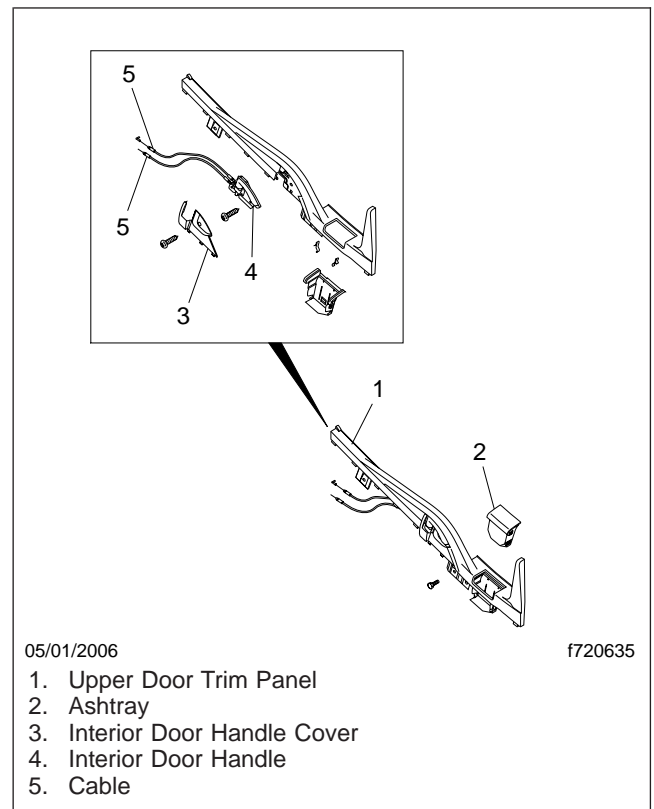


Fig. 2, Upper Door Trim

5. Remove the speaker from the door.
6. Remove the weatherproof cover from the door. Slip the speaker wire out through the hole in the weatherproof cover. Move the speaker wire out of the way.
7. Remove the trim bracket from the door.
8. Remove the interior door handle from the upper door trim panel. Do not remove the cables from the door handle. Move the door handle out of the way.

9. Remove the upper door trim panel from the door.
10. Loosen the three nuts that attach the motor assembly to the overhanging portion of the door. Pull the motor assembly out from behind the overhang, and disconnect the electrical connector. See [Fig. 3](#).
11. Remove the window trim from the window frame. See [Fig. 4](#).

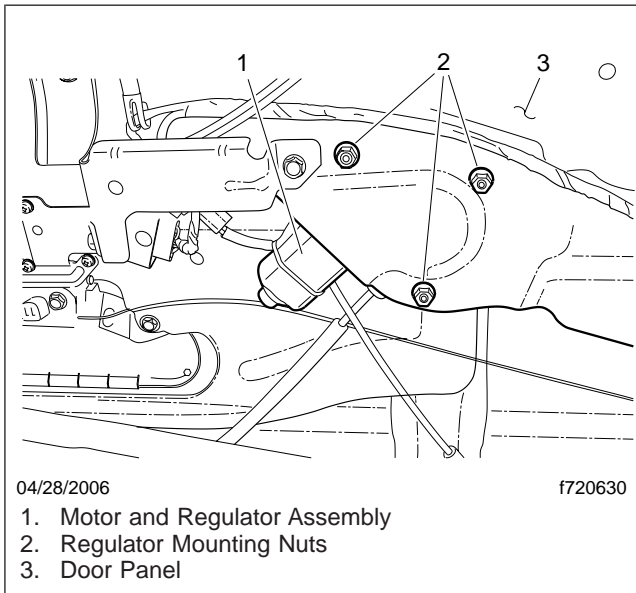


Fig. 3, Motor and Regulator Assembly Removal

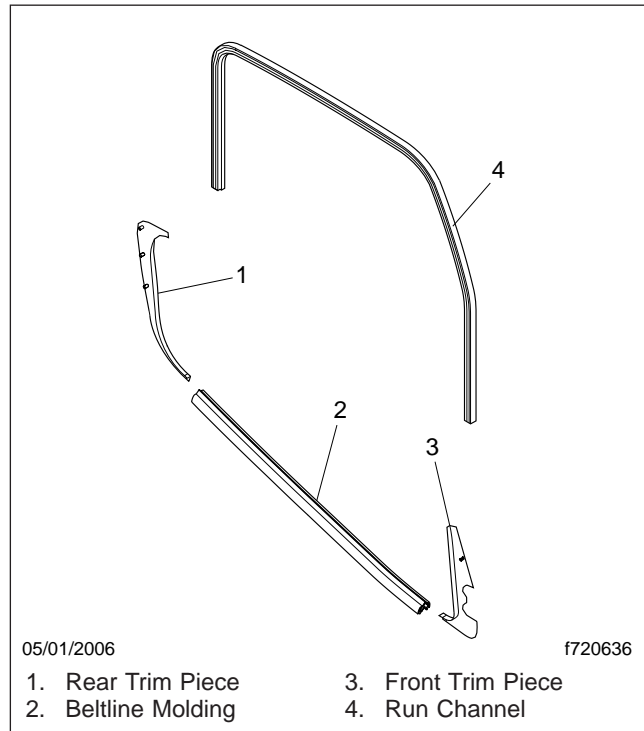


Fig. 4, Window Trim

- 11.1 Move the window all the way down, if not done already.
- 11.2 Remove the front and rear trim pieces from the window frame.
- 11.3 Remove the run channel and beltline molding from the window frame.
12. Remove the window glass from the motor and regulator mechanism. See [Fig. 5](#).
 - 12.1 Move the window until the window glass mounting screws are accessible.
 - 12.2 Remove the window glass mounting screws from the nutserts at the bottom of the glass.
 - 12.3 Remove the glass from the door.
13. Remove the window motor and regulator mechanism from the door.

Installation

1. Install the window motor and regulator mechanism on the door. See [Fig. 6](#).
 - 1.1 Position the two slides on the door and secure them with screws. Apply Triton 460 grease to the slide tracks and make sure the slides run smoothly. Attach the slides to the door panel and tighten the slide mounting screws 35 to 53 lbf-in (400 to 600 N·cm). Use the order shown in [Fig. 7](#).

L-Line
A-Line

Cargo
Acterra

Condor
> 360

Sterling
Service Bulletin

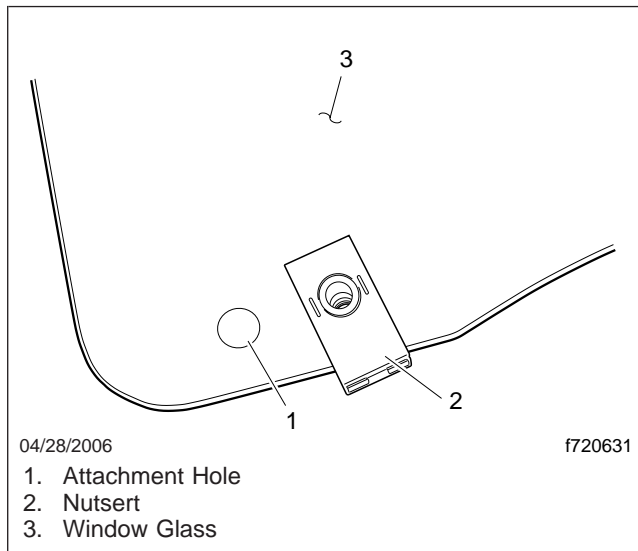


Fig. 5, Window Fastening

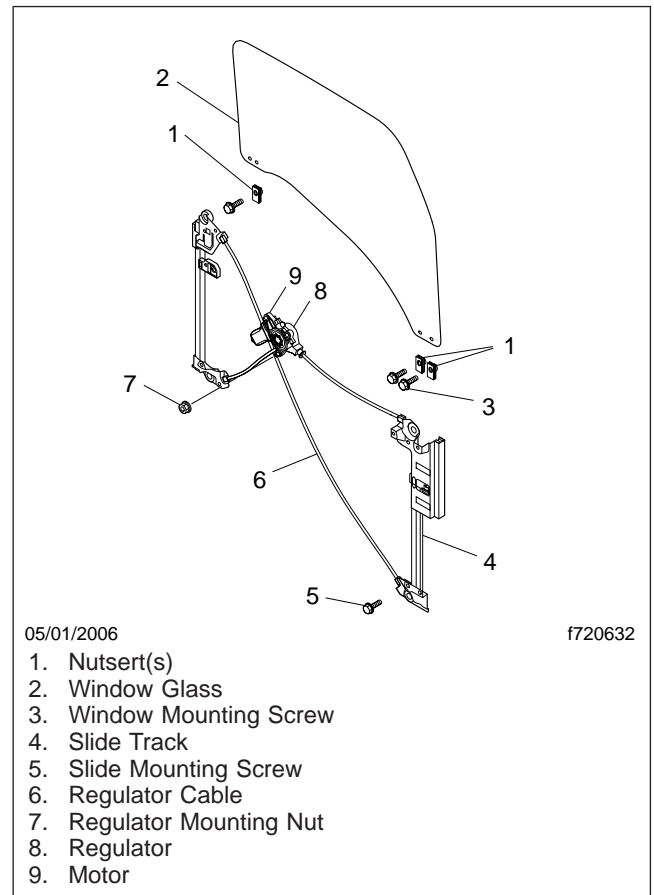


Fig. 6, Window Regulator Mechanism

- 1.2 Attach the motor assembly to the door. Position the motor inside the cutout portion of the door, and insert the mounting studs into the holes in the overhang, as removed. Tighten the window regulator nuts 35 to 53 lbf-in (400 to 600 N-cm).
2. Install the window glass on the motor and regulator mechanism. See [Fig. 5](#).
 - 2.1 Position the window so that the attachment holes and nutserts at the bottom of the glass are accessible.
 - 2.2 Coat the window glass mounting screws with Loctite® 202 (green), or equivalent.

NOTE: Two persons are required for this substep. One person holds the glass, and the other person inserts the mounting screws into the nutserts.

 - 2.3 Attach the window glass to the slides. Tighten the window mounting screws 35 to 53 lbf-in (400 to 600 N-cm).
3. Drive the window all the way to the bottom of the slides.
4. Install the run channel in the window frame.
5. Install the beltline molding and the front and rear trim pieces in the window frame. Make sure the prongs in the beltline molding grip the window frame.

6. Install the weatherproof cover over the cutout portion of the door. Run the speaker wire through the hole in the waterproof cover.
7. Install the speaker in the lower door panel, as removed.
8. Install the upper door trim panel on the door. Tighten the door trim screws 7 to 11 lbf-ft (10 to 15 N·m). See [Fig. 8](#).

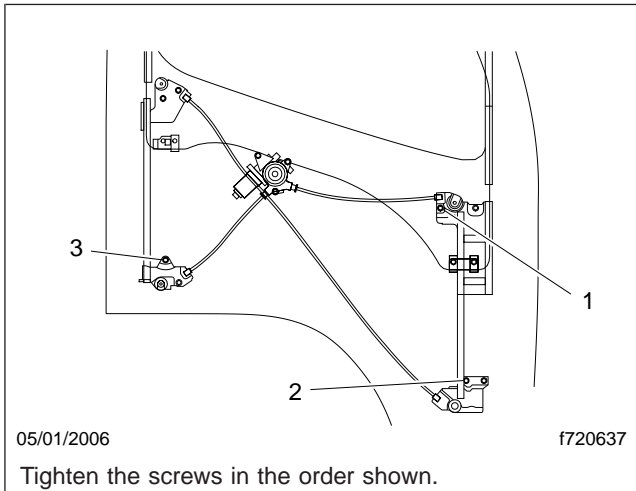


Fig. 7, Slide Mounting Screw Tightening Order

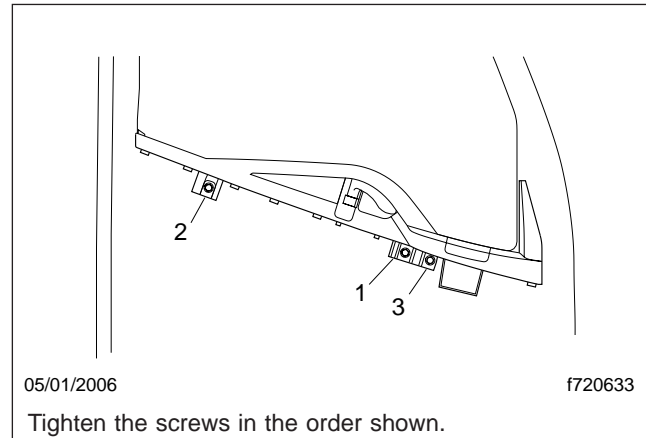


Fig. 8, Upper Door Trim Screw Tightening Order

9. Install the interior door handle and cover, as removed. Apply Triton 460 grease (or any chassis grease meeting NLGI No. 1) to the moving parts of the door handle. Tighten the screw until firm.
10. Install the lower door trim panel on the door. Tug gently on the panel to make sure the speed clips are engaged.
11. Install the power window switch assembly in its slot in the lower door trim panel, as removed.
12. Install the ashtray in the upper door trim panel.
13. Run the window all the way up and clean the window glass. Check the door panel to make sure all screws are tight and all panels are securely fastened.

Warranty

Normal warranty applies to window glass. This bulletin is informational and does not supply specific warranty information.