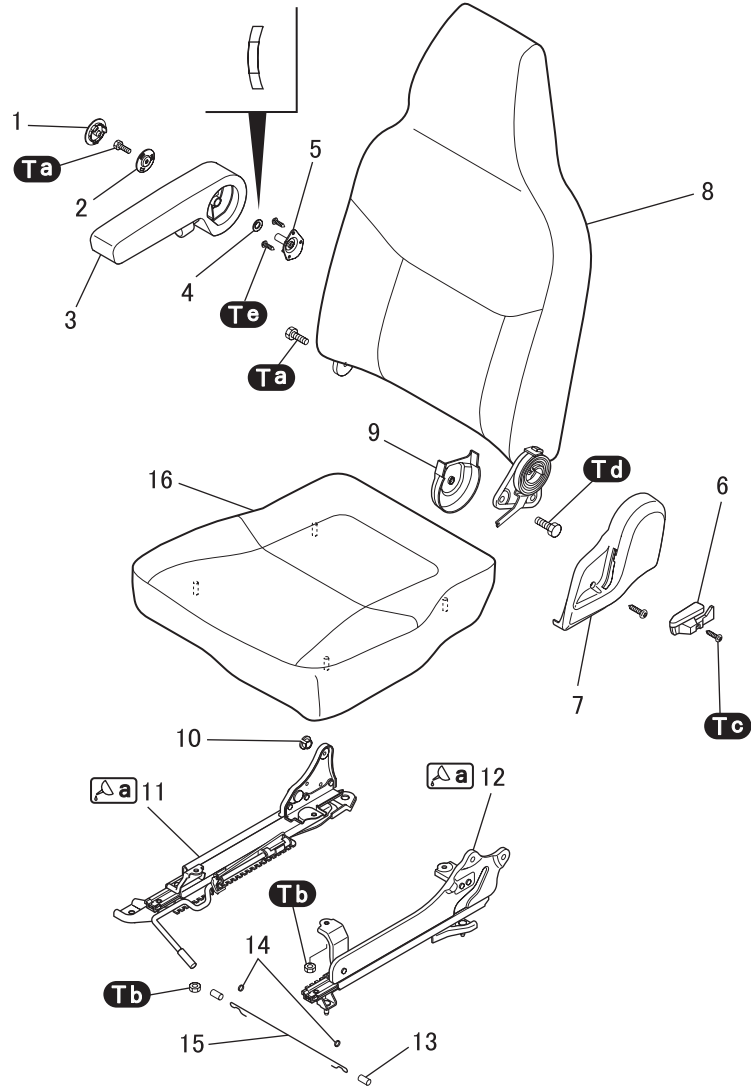
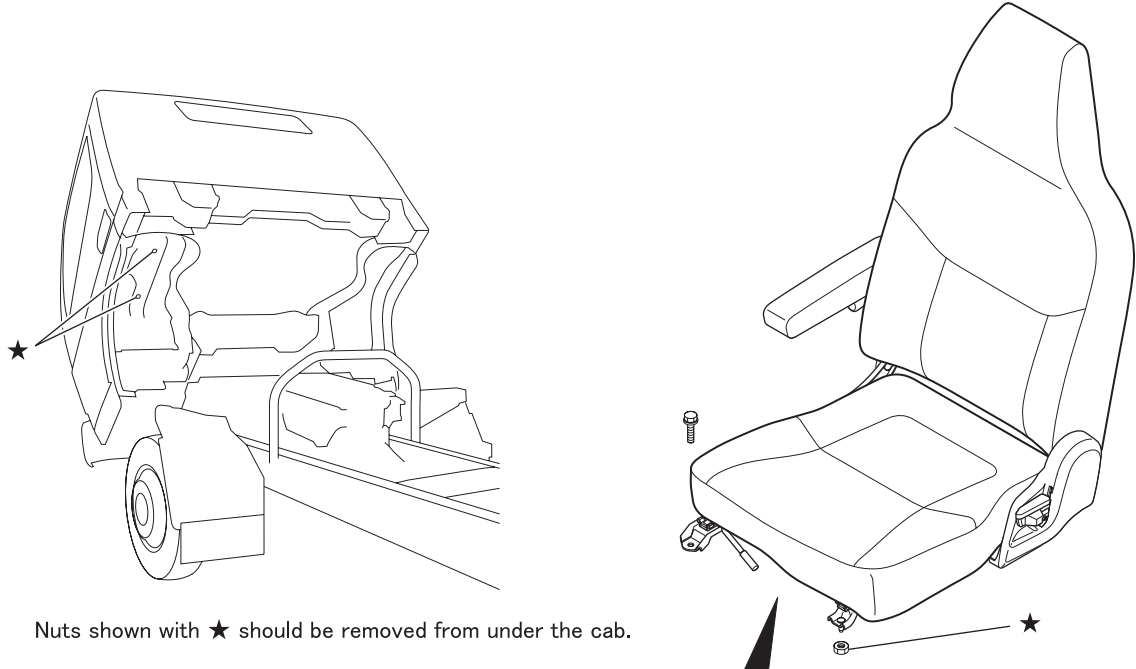

INDEX

SEAT	
<DRIVER>.....	52-2
<PASSENGER>.....	52-4
SEAT BELT	52-6
INSTRUMENT PANEL	52-8
TRIM AND SCUFF PLATE	52-24
HEAD LINING.....	52-26

SEAT <DRIVER>



● Removal sequence

- | | | |
|-------------------|-------------------------------|-----------------|
| 1 Cover | 7 Reclining cover | 13 Tube |
| 2 Plate | 8 Back cushion | 14 Clip |
| 3 Armrest | 9 Inner cover | 15 Wire |
| 4 Washer | 10 Bushing | 16 Seat cushion |
| 5 Armrest bracket | 11 Seat adjuster (right-hand) | |
| 6 Knob | 12 Seat adjuster (left-hand) | |

● Installation sequence

Follow the removal sequence in reverse.


CAUTION

- When installing the seat adjusters, be sure to engage the locking device before fitting them onto the seat cushion.

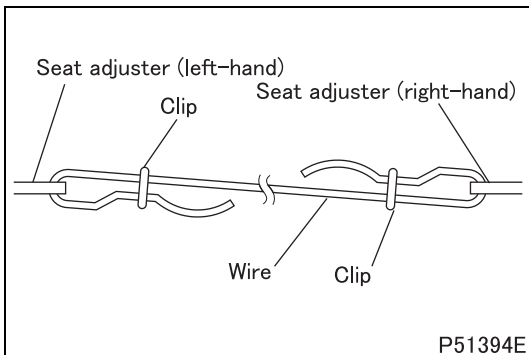
Tightening torque (Unit: N·m {ft.lbs, kgf·m})

Mark	Parts to be tightened	Tightening torque	Remarks
Ta	Screw (plate mounting)	10 to 15 {7.4 to 11, 1.0 to 1.5}	-
	Bolt (back cushion mounting)		
Tb	Screw (armrest bracket mounting)	4 to 6 {2.95 to 4.43, 0.4 to 0.6}	-
	Nut (seat adjuster mounting)	11 to 17 {8.11 to 12.5, 1.1 to 1.7}	-
Tc	Screw (knob mounting)	1.4 {1.0, 0.14}	-
Td	Bolt (back cushion mounting)	34.3 to 53.9 {25 to 40, 3.5 to 5.5}	-
Te	Screw (armrest bracket mounting)	4 to 6 {2.95 to 4.43, 0.4 to 0.6}	-

Lubricant and/or sealant

Mark	Points of application	Specified lubricant and/or sealant	Quantity
 a	Sliding surface of seat adjuster	Chassis grease [NLGI No. 1 (Li soap)]	As required

◆ Installation procedure ◆



■ Installation: Wire

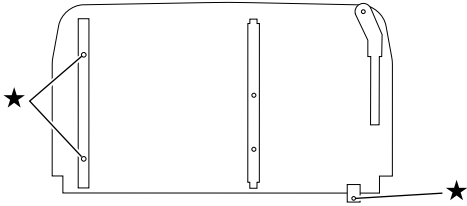
- Install one end of the wire onto the seat adjuster (left-hand). Then, twist the wire a half turn before fitting the other end onto the seat adjuster (right-hand).

SEAT <PASSENGER>

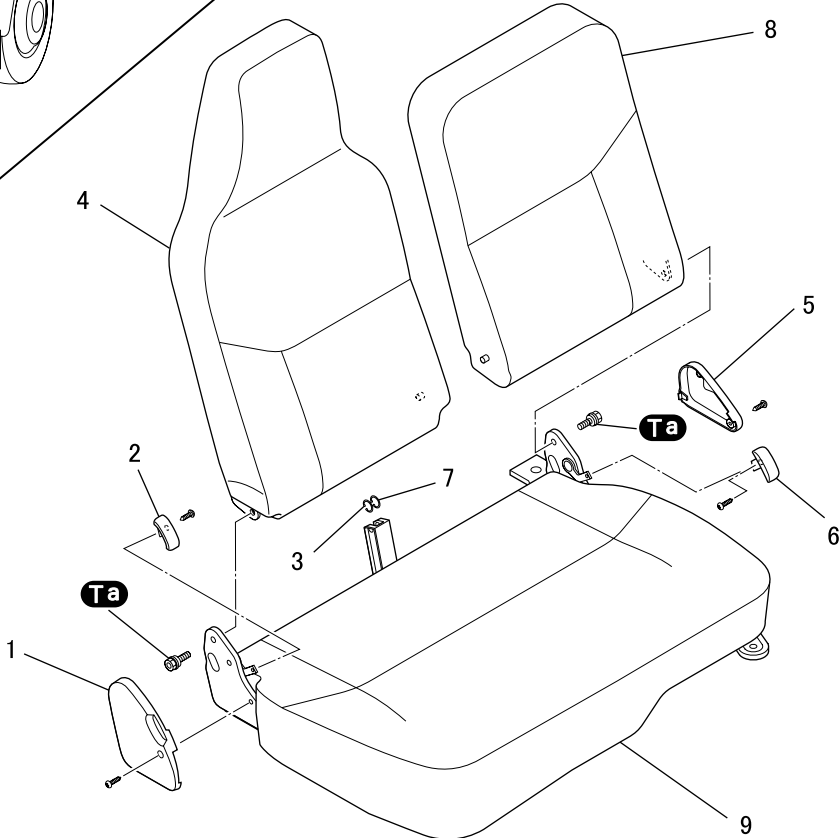
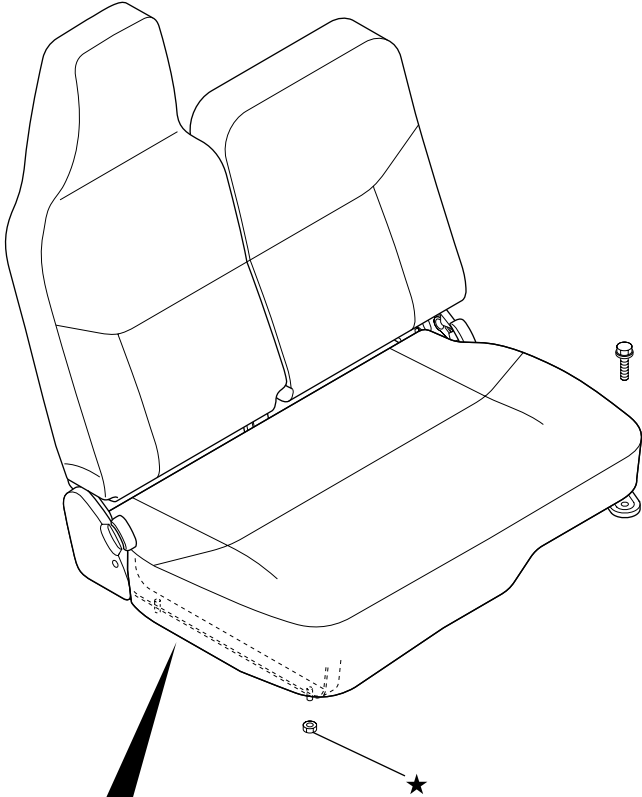
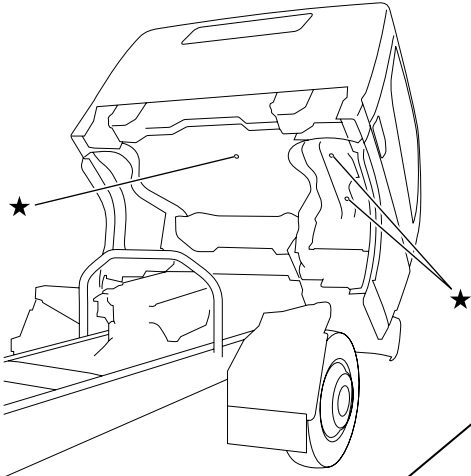


Bottom view

↑ Front of vehicle



Nuts shown with ★ should be removed from under the cab.



● **Removal sequence**

- | | |
|--------------------------------|-----------------------|
| 1 Reclining cover (right-hand) | 6 Knob |
| 2 Knob | 7 Snap ring |
| 3 Snap ring | 8 Center back cushion |
| 4 Side back cushion | 9 Seat cushion |
| 5 Reclining cover (left-hand) | |

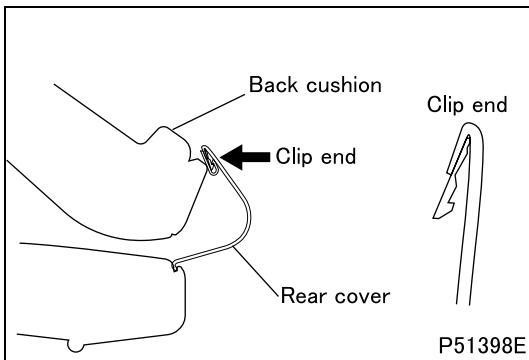
● **Installation sequence**

Follow the removal sequence in reverse.

Tightening torque (Unit: N-m {ft.lbs, kgf-m})

Mark	Parts to be tightened	Tightening torque	Remarks
Ta	Bolt (back cushion mounting)	19 to 28 {14 to 21, 1.9 to 2.8}	—

◆ **Removal procedure** ◆

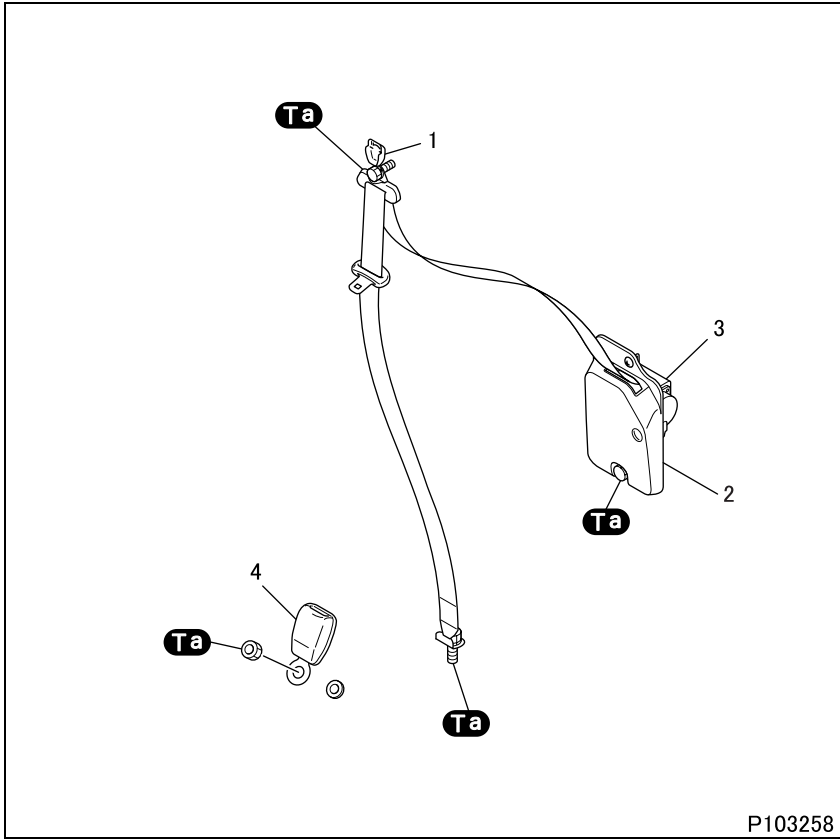


■ **Removal: Back cushions**

- With the back cushion folded forward, disengage the clip end of the rear cover.

SEAT BELT

<Driver>



● **Removal sequence**

- 1 Shoulder anchor cover
- 2 Emergency locking retractor cover
- 3 Emergency locking retractor
- 4 Buckle

● **Installation sequence**

Follow the removal sequence in reverse.

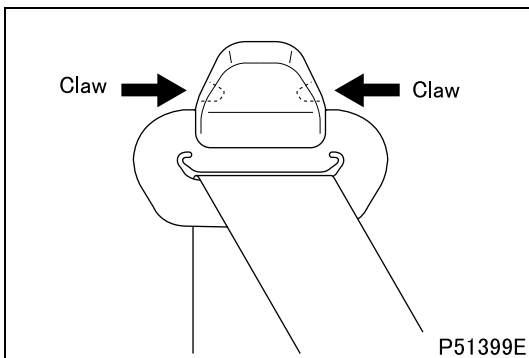
CAUTION ⚠ _____

- Never disassemble the emergency locking retractor, or buckle.

Tightening torque (Unit: N·m {ft.lbs, kgf·m})

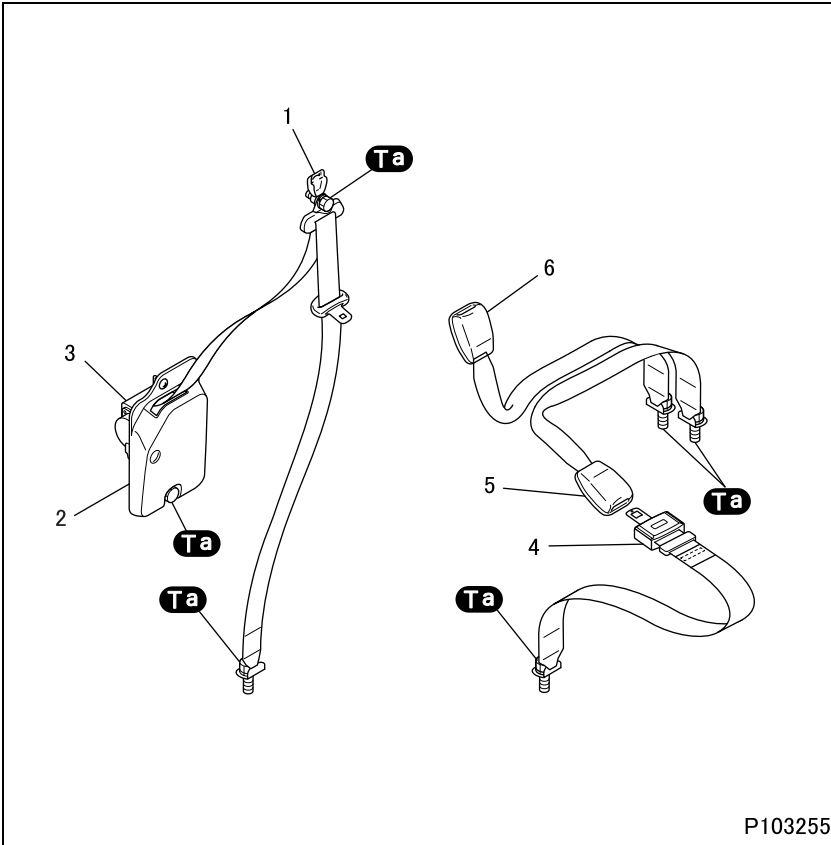
Mark	Parts to be tightened	Tightening torque	Remarks
Ta	Bolt (floor anchor mounting)	34 to 54 {25 to 40, 3.5 to 5.5}	-
	Bolt (shoulder anchor mounting)		
	Bolt (emergency locking retractor mounting)		
	Nut (buckle mounting)		

◆ **Removal procedure** ◆



■ **Removal: Shoulder anchor cover**

<Passenger>



P103255

● Removal sequence

- 1 Shoulder anchor cover
- 2 Emergency locking retractor cover
- 3 Emergency locking retractor
- 4 Buckle
- 5 Tongue
- 6 Buckle

● Installation sequence

Follow the removal sequence in reverse.

CAUTION ⚠

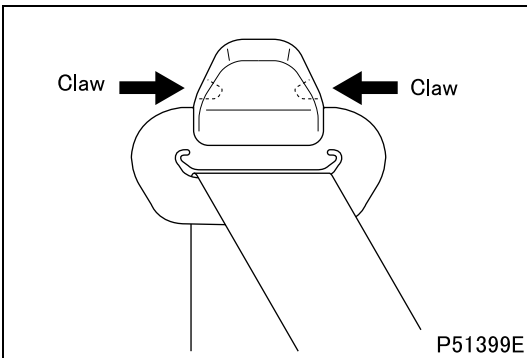
- Never disassemble the emergency locking retractor, or buckle.

Tightening torque (Unit: N·m

{ft.lbs, kgf·m})

Mark	Parts to be tightened	Tightening torque	Remarks
Ta	Bolt (floor anchor mounting)	34 to 54 {25 to 40, 3.5 to 5.5}	-
	Bolt (shoulder anchor mounting)		
	Bolt (emergency locking retractor mounting)		
	Bolt (buckle mounting)		
	Bolt (tongue mounting)		

◆ Removal procedure ◆

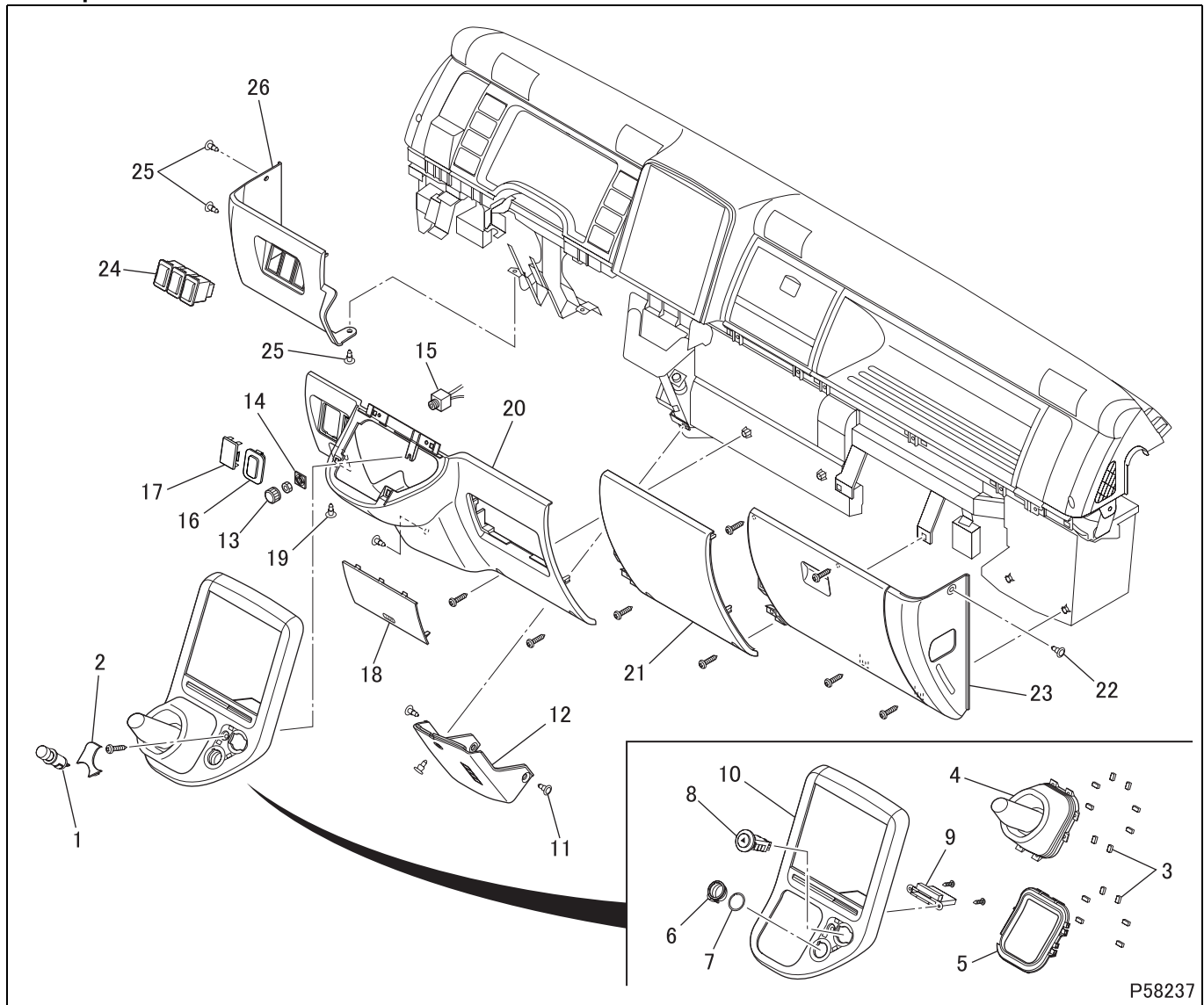


P51399E

■ Removal: Shoulder anchor cover

INSTRUMENT PANEL

Lower panel



P58237

● Removal sequence

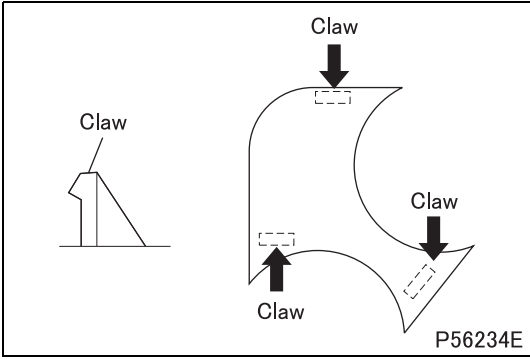
- | | |
|--------------------------------------|----------------------------------|
| 1 Cigarette lighter | 16 Plug |
| 2 Panel cover | 17 Plug |
| 3 Push-on nut (× 8 <M/T>, × 6 <A/T>) | 18 Lid (for inspection of fuses) |
| 4 Shift lever boots <M/T> | 19 Clip |
| 5 A/T cover <A/T> | 20 Lower center panel |
| 6 Cigarette lighter ring | 21 Passenger panel B |
| 7 Cigarette lighter protector | 22 Clip |
| 8 Hazard switch | 23 Passenger panel A |
| 9 Card holder | 24 Switch or plug |
| 10 Upper center panel | 25 Clip (× 3) |
| 11 Clip | 26 Driver panel |
| 12 Gear shift lever cover | |
| 13 Knob | |
| 14 Plate | |
| 15 Idle speed adjuster | |

M/T: Manual transmission
A/T: Automatic transmission

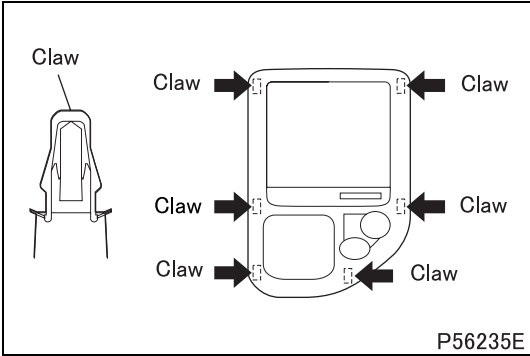
● Installation sequence

Follow the removal sequence in reverse.

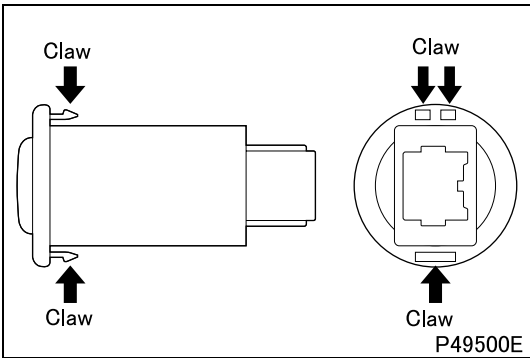
◆ Removal procedure ◆



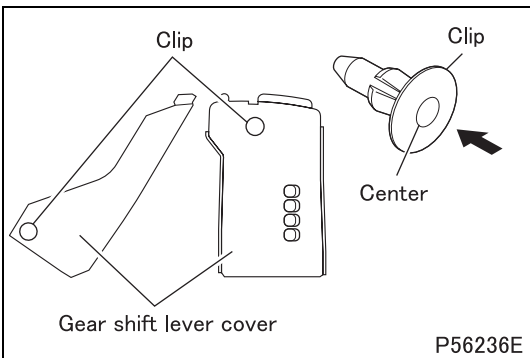
■ Removal: Panel cover



■ Removal: Upper center panel

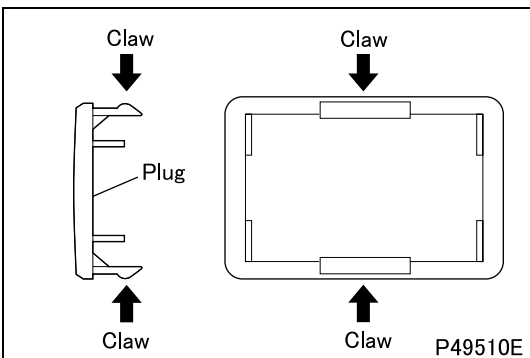


■ Removal: Hazard switch



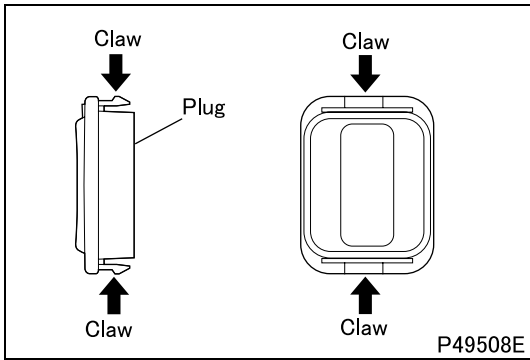
■ Removal: Gear shift lever cover

- Push the clips (× 3) in the center to disengage them from the gear shift lever cover.

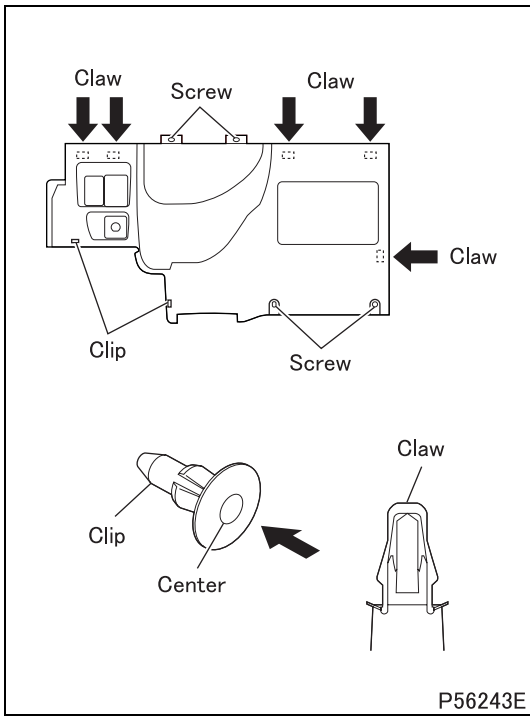


■ Removal: Plug

INSTRUMENT PANEL

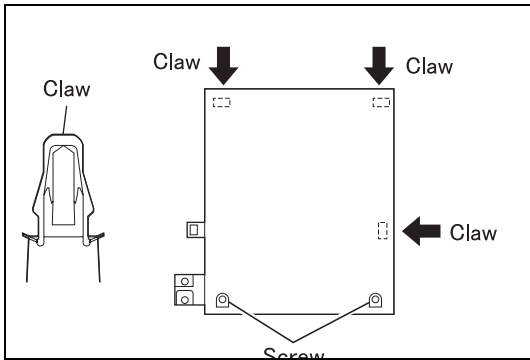


■ Removal: Plug

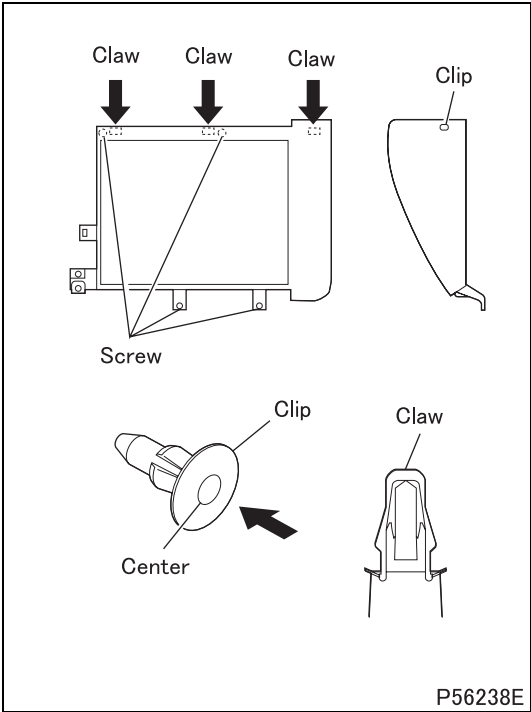


■ Removal: Lower center panel

- Remove the screws (× 4) from the lower center panel.
- Push the clips (× 2) in the center to disengage them from the lower center panel.

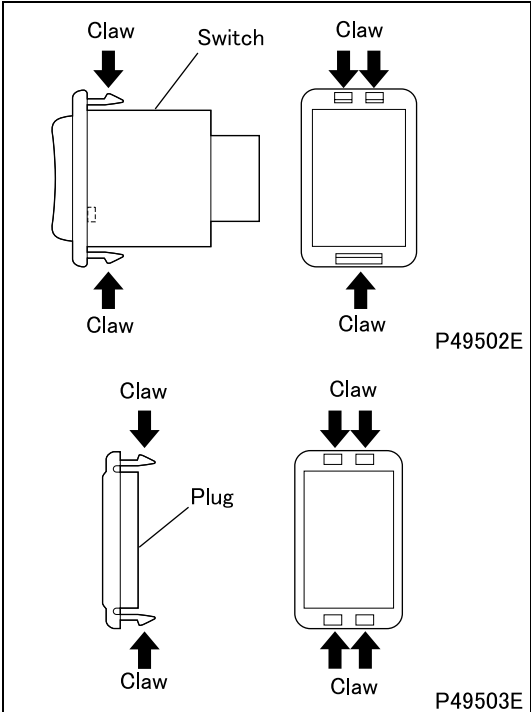


■ Removal: Passenger panel B



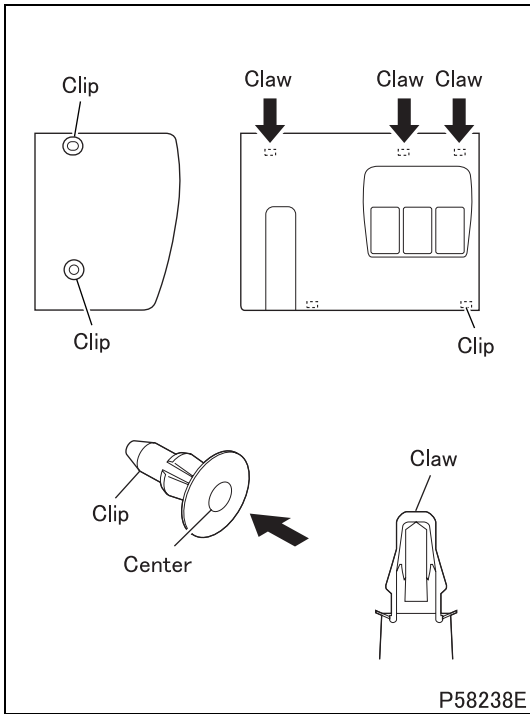
■ Removal: Passenger panel A

- Remove the screws (× 4) from the passenger panel.
- Push the clip (× 1) in the center to disengage it from the passenger panel.



■ Removal: Switch or plug

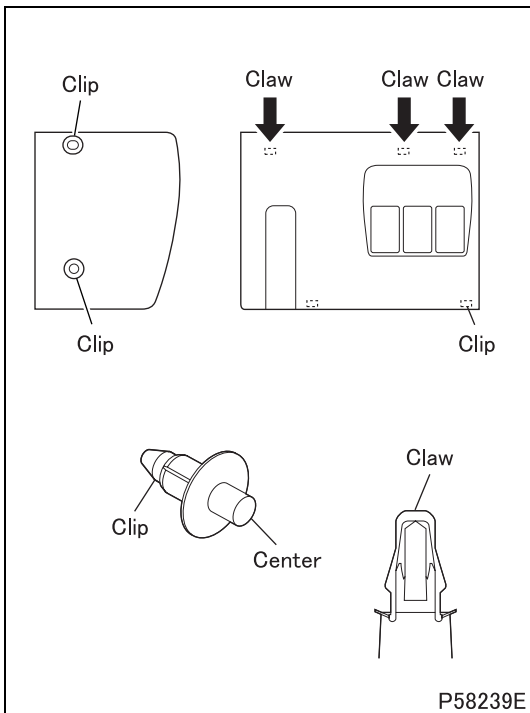
INSTRUMENT PANEL



■ Removal: Driver panel

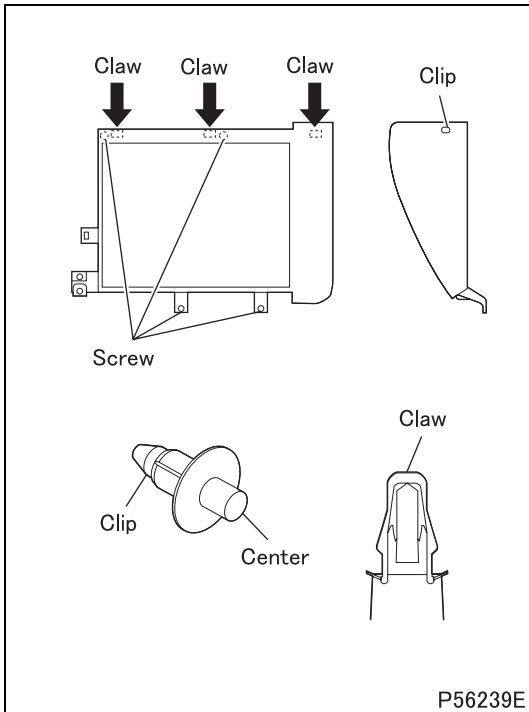
- Push the clips (× 3) in the center to disengage them from the driver panel.

◆ Installation procedure ◆



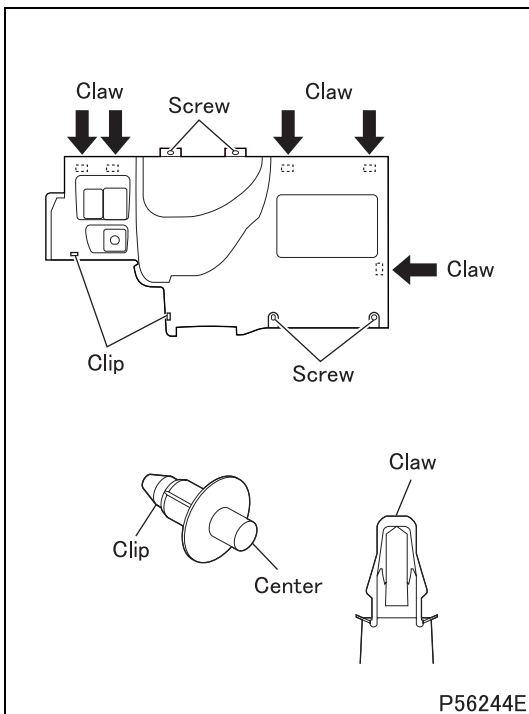
■ Installation: Driver panel

- Insert the clips (× 3) at the illustrated locations and push them in the center to engage into the driver panel.



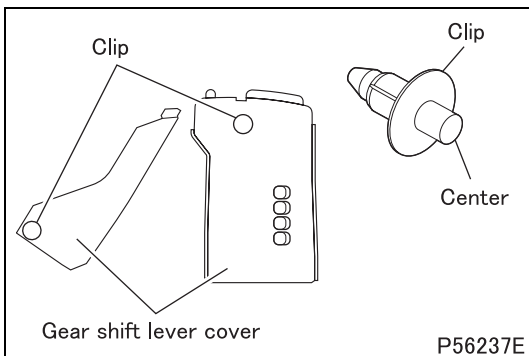
■ Installation: Passenger panel A

- Insert the clip (× 1) at the illustrated location and push it in the center to engage into the passenger panel.
- Install the screws (× 4) to the passenger panel.



■ Installation: Lower center panel

- Insert the clips (× 2) at the illustrated locations and push them in the center to engage into the lower center panel.
- Install the screws (× 4) to the lower center panel.

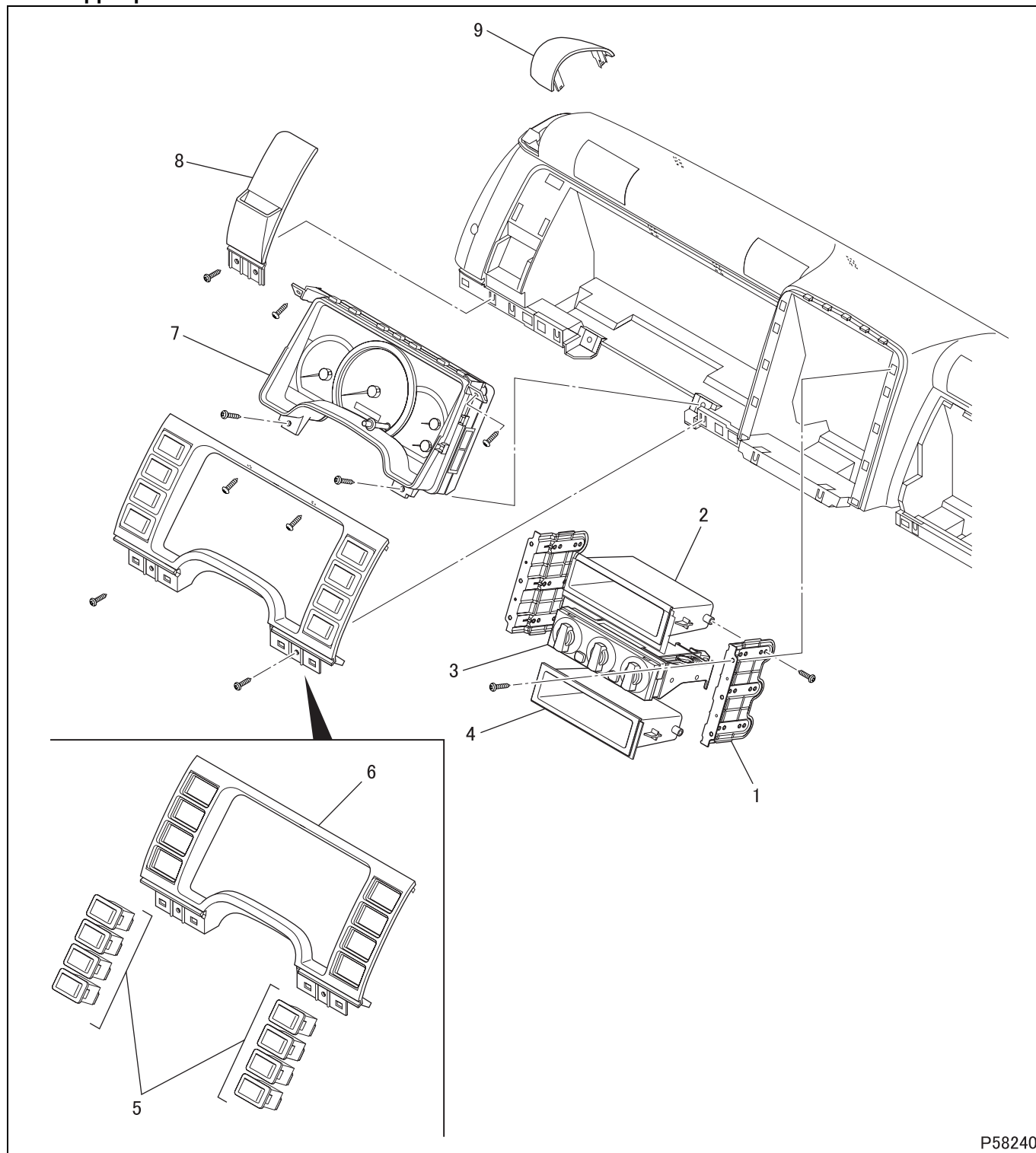


■ Installation: Gear shift lever cover

- Insert the clips (× 3) at the illustrated locations and push them in the center to engage into the gear shift lever cover.

INSTRUMENT PANEL

Driver upper panel



P58240

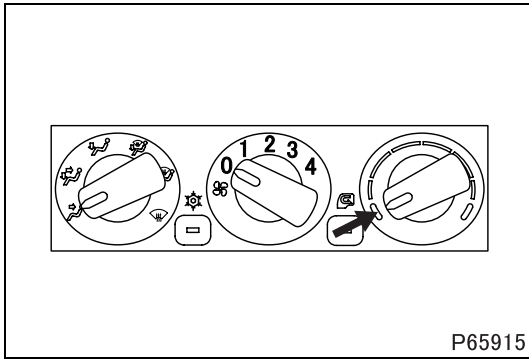
● Removal sequence

- 1 Radio bracket
- 2 Box
- 3 Heater controls
- 4 Box
- 5 Switch or plug
- 6 Meter bezel
- 7 Meter cluster
- 8 Lid (accessories box)
- 9 Lid (brake fluid tank)

● Installation sequence

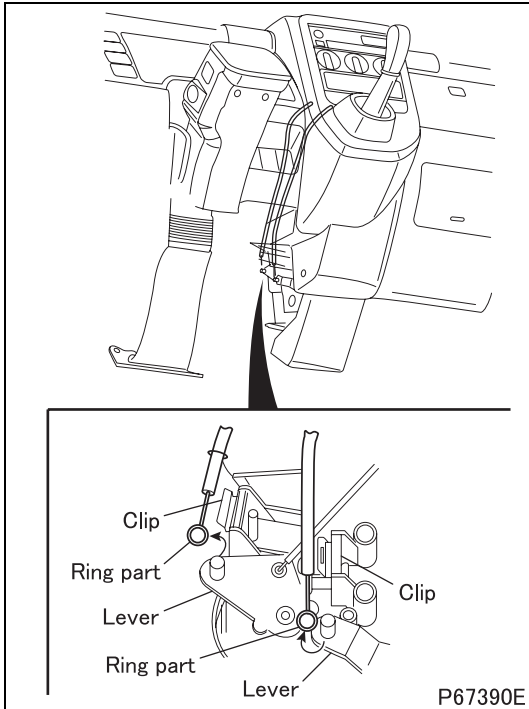
Follow the removal sequence in reverse.

◆ Work before removal ◆

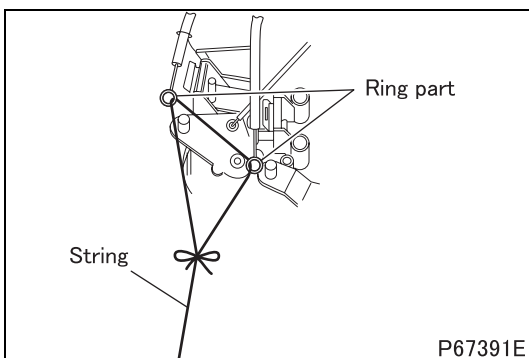


■ Removal: Control cables

- Turn the temperature control knob of the heater controls to the MAX-COOL position.



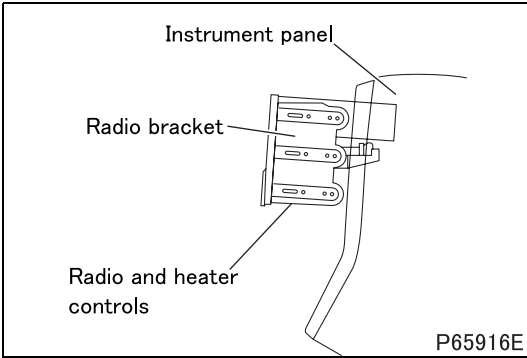
- Before disconnecting the cables from the levers, put pairing marks on each cable and its lever.
- Disconnect the control cables from the heater unit.



- In order that the control cables can be pulled back at the time of installation, attach string to the ring parts of the cables as shown in the illustration.

INSTRUMENT PANEL

◆ Removal procedure ◆

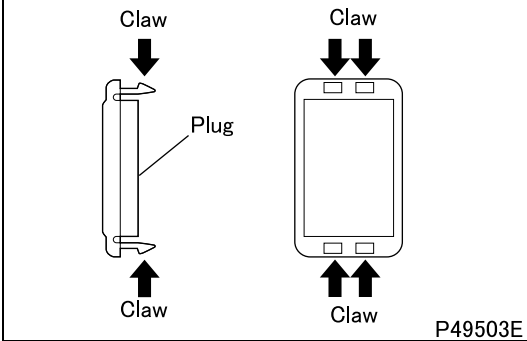
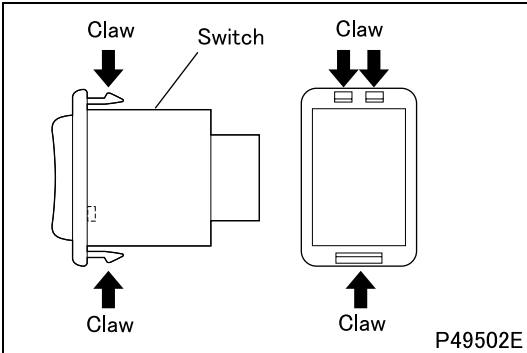


■ Removal: Radio bracket

- Pull out the radio bracket for radio and heater controls until it completely comes out of the instrument panel as shown in the illustration.

CAUTION ⚠

- Do not pull the bracket with a strong force. Pulling it strongly could give damage to the heater controls and control cables.



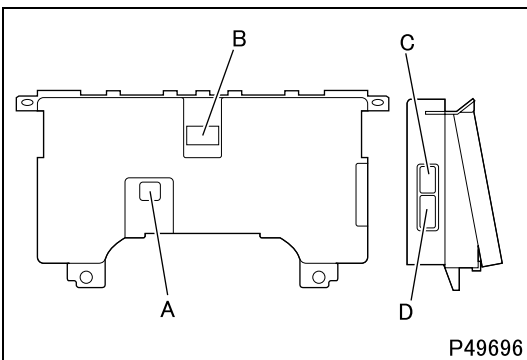
■ Removal: Meter cluster

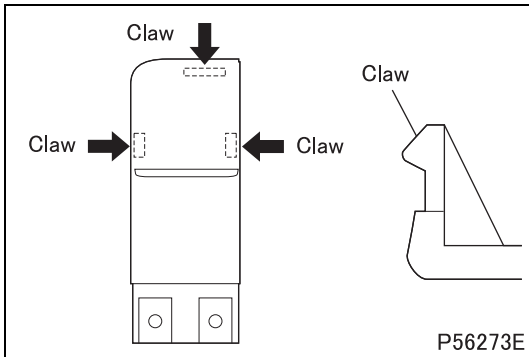
■ Removal: Meter cluster

- Disconnect the cab harness connectors **A** to **D** from the meter cluster and remove the meter cluster from the instrument panel. (The illustration shows the rear face of the meter cluster.)

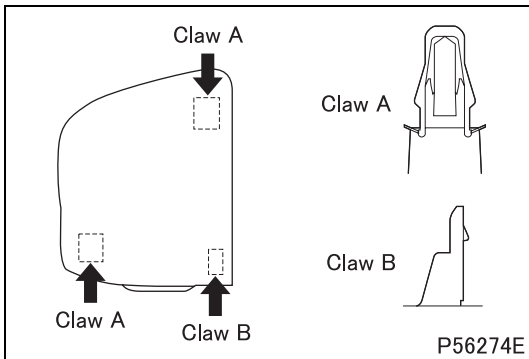
Connector poles

A	B	C	D
10	20	18	22



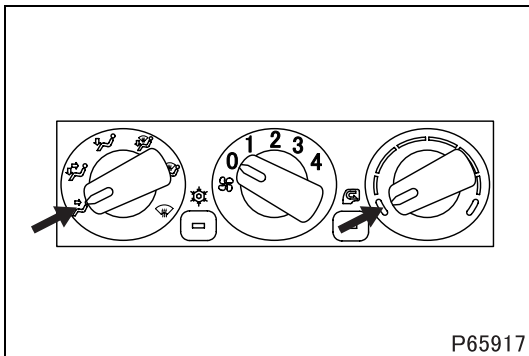


■ Removal: Lid (accessories box)



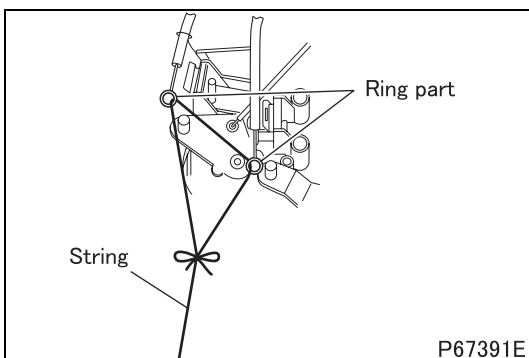
■ Removal: Lid (brake fluid tank)

◆ Work after installation ◆



■ Installation: Control cables

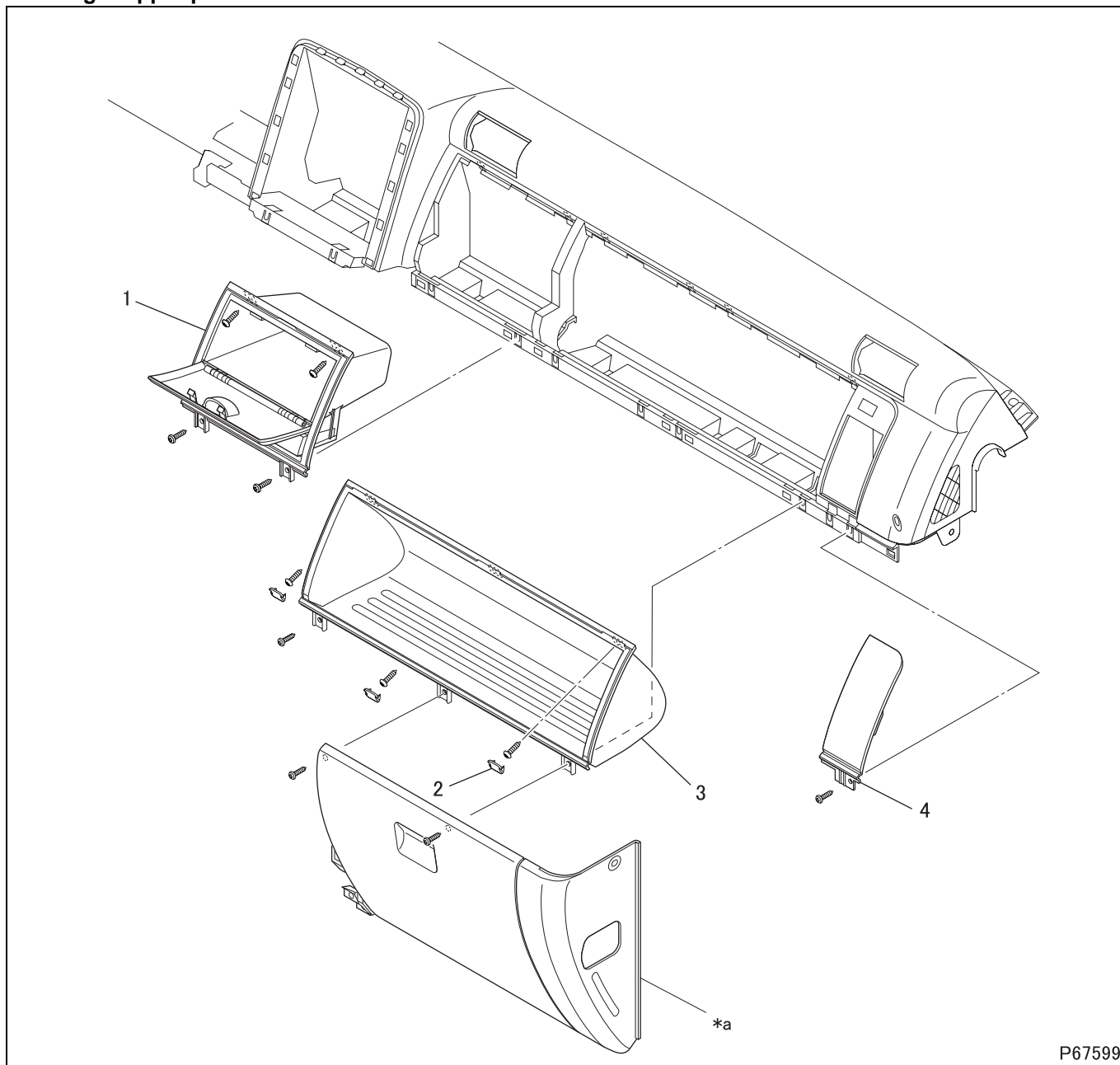
- Of the heater controls, turn the temperature control knob to the MAX-COOL position and also turn the mode selector knob to the face position.



- Pull out the control cables using the string that was attached to them at the time of removal.
- According to the pairing marks, reconnect the cables to the heater unit levers correctly. (See Gr 55.)

INSTRUMENT PANEL

Passenger upper panel



P67599

● Removal sequence

- 1 Glove box
- 2 Plug

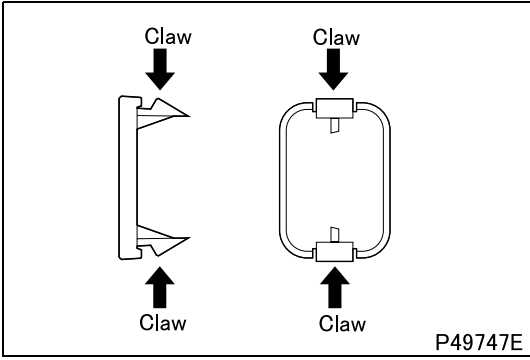
- 3 Parcel tray
- 4 Lid (for inspection of relays)

*a: Passenger panel

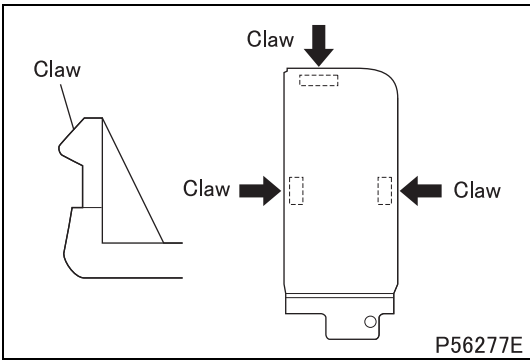
● Installation sequence

Follow the removal sequence in reverse.

◆ Removal procedure ◆



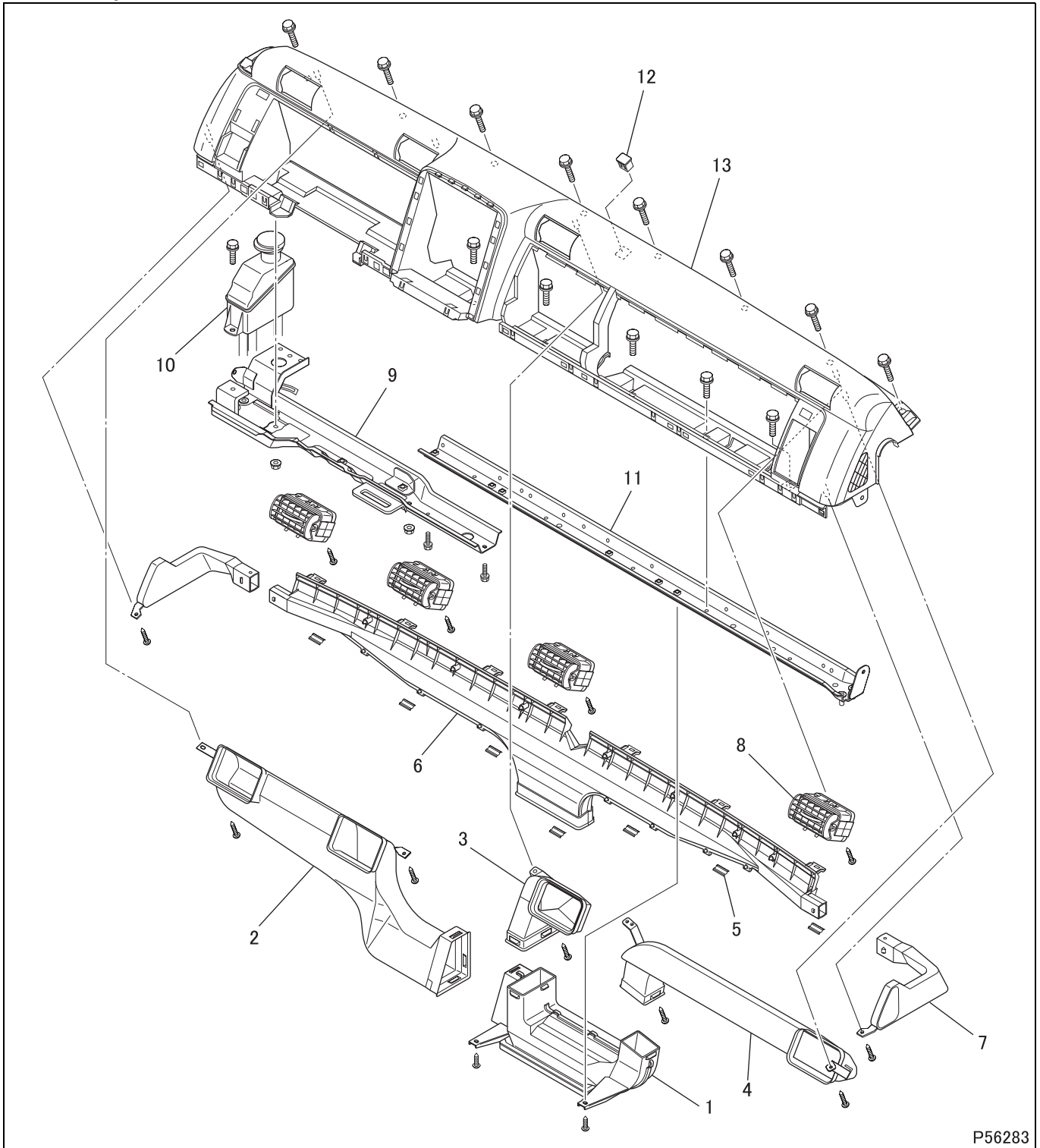
■ Removal: Plug



■ Removal: Lid (for inspection of relays)

INSTRUMENT PANEL

Instrument panel



P56283

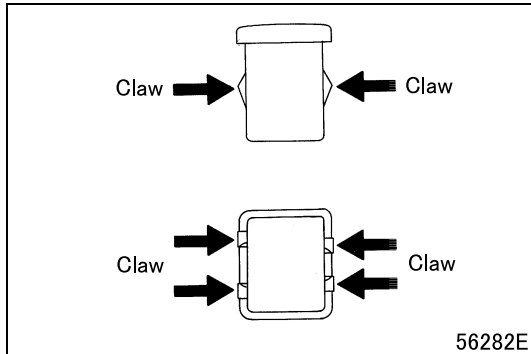
● Removal sequence

- | | |
|------------------------|-------------------------------------|
| 1 Center duct | 8 Air outlet grille |
| 2 Driver face duct | 9 Driver instrument panel frame |
| 3 Center face duct | 10 Brake fluid tank |
| 4 Passenger face duct | 11 Passenger instrument panel frame |
| 5 Clip (× 7) | 12 Plug |
| 6 Front defroster duct | 13 Instrument panel |
| 7 Side defroster duct | |

● Installation sequence

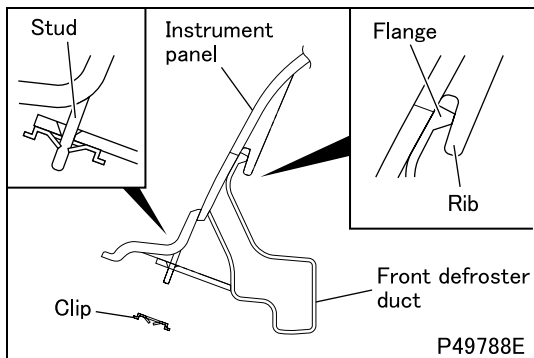
Follow the removal sequence in reverse.

◆ Removal procedure ◆



■ Removal: Plug

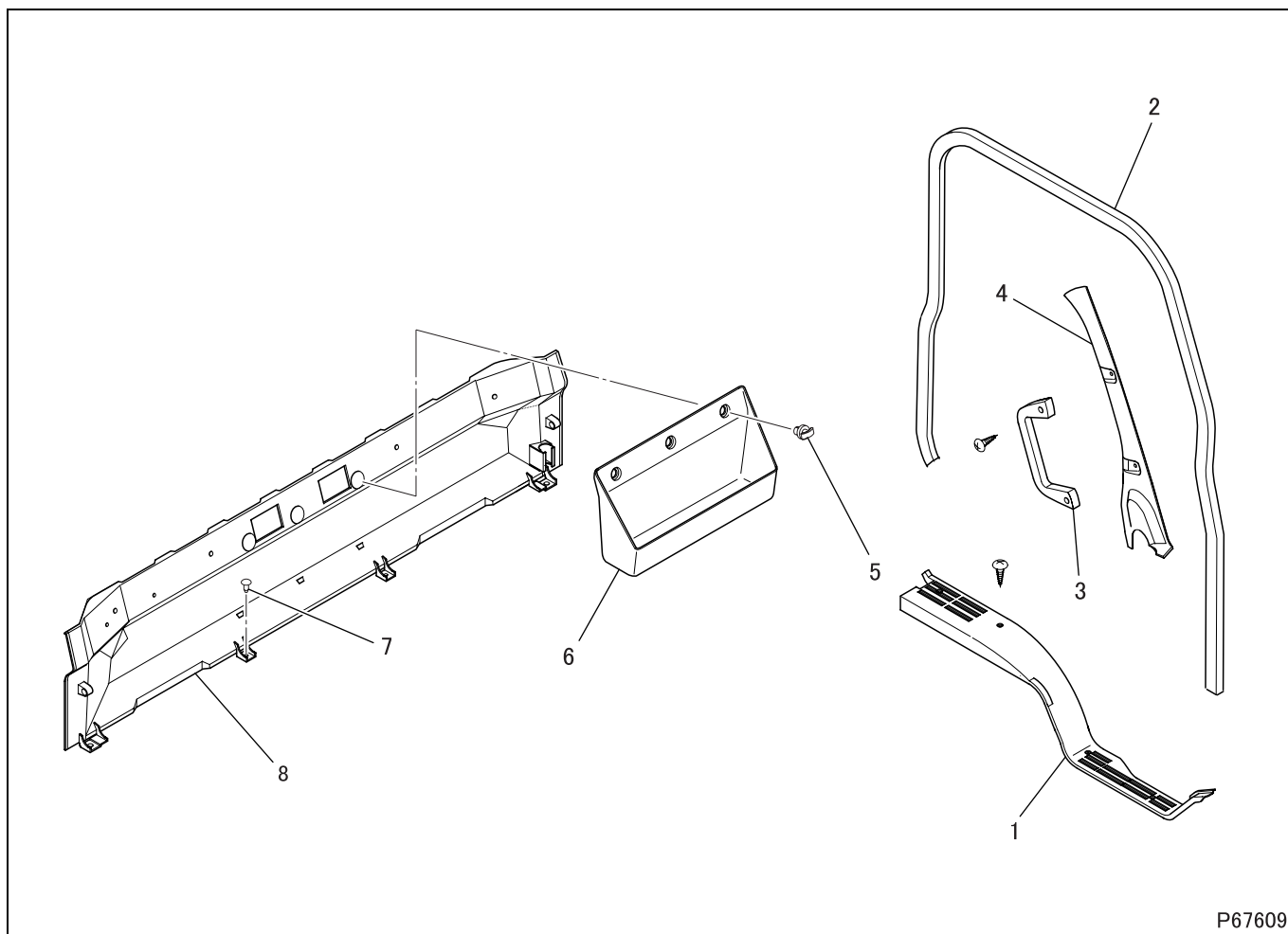
◆ Installation procedure ◆



■ Installation: Front defroster duct

- Insert the front defroster duct flanges into the instrument panel ribs.
- Insert the instrument panel studs into the front defroster duct holes and clip them together.

INSTRUMENT PANEL



P67609

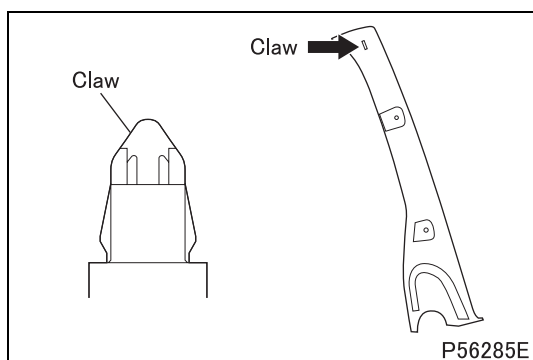
● Removal sequence

- | | |
|---------------------|-------------------|
| 1 Scuff plate | 5 Hook (× 3) |
| 2 Weatherstrip | 6 Back panel tray |
| 3 Grip | 7 Clip |
| 4 Front pillar trim | 8 Lower rear trim |

● Installation sequence

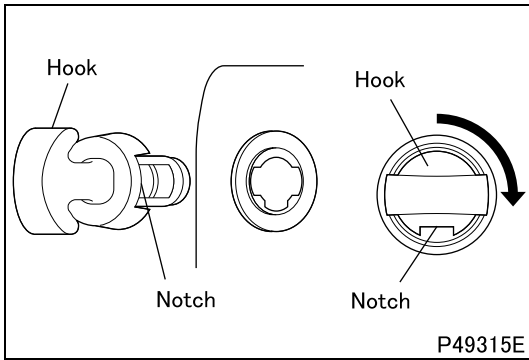
Follow the removal sequence in reverse.

◆ Removal procedure ◆



P56285E

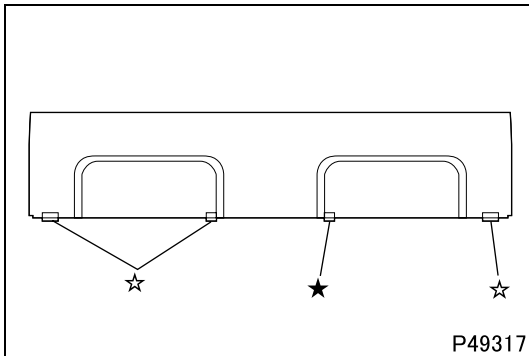
■ Removal: Front pillar trim



■ Removal: Hook

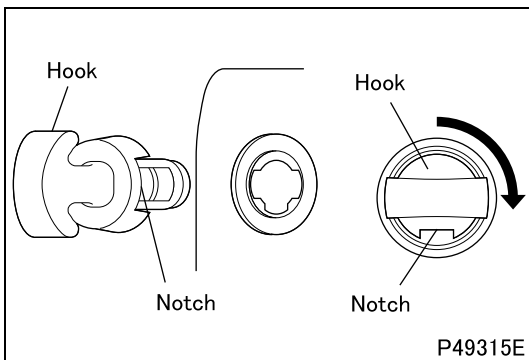
- Turn the hook 90° to disengage it.

◆ Installation procedure ◆



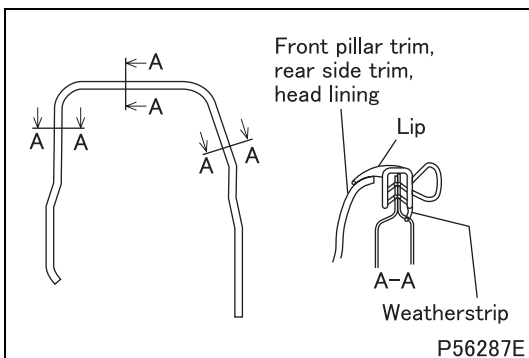
■ Installation: Lower rear trim

- Locate the lower rear trim correctly in position by installing a clip into the hole ☆.
- Install 3 clips into the holes ☆ to completely fix the lower rear trim in position.



■ Installation: Hook

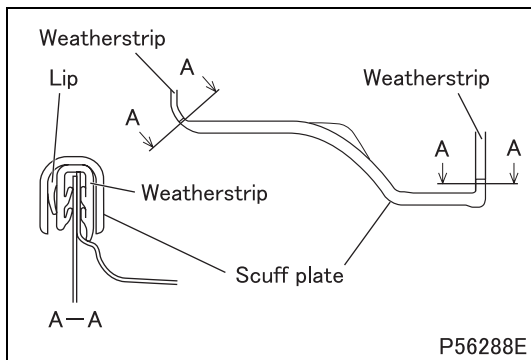
- With the notch facing in the illustrated direction, insert the hook into the lower rear trim.
- To engage the hook, turn it 90° until the notch faces downwards.



■ Installation: Weatherstrip

- Install the weatherstrip in such a manner that the lip of the strip holds down the front pillar trim, rear side trim, and head lining.

TRIM AND SCUFF PLATE

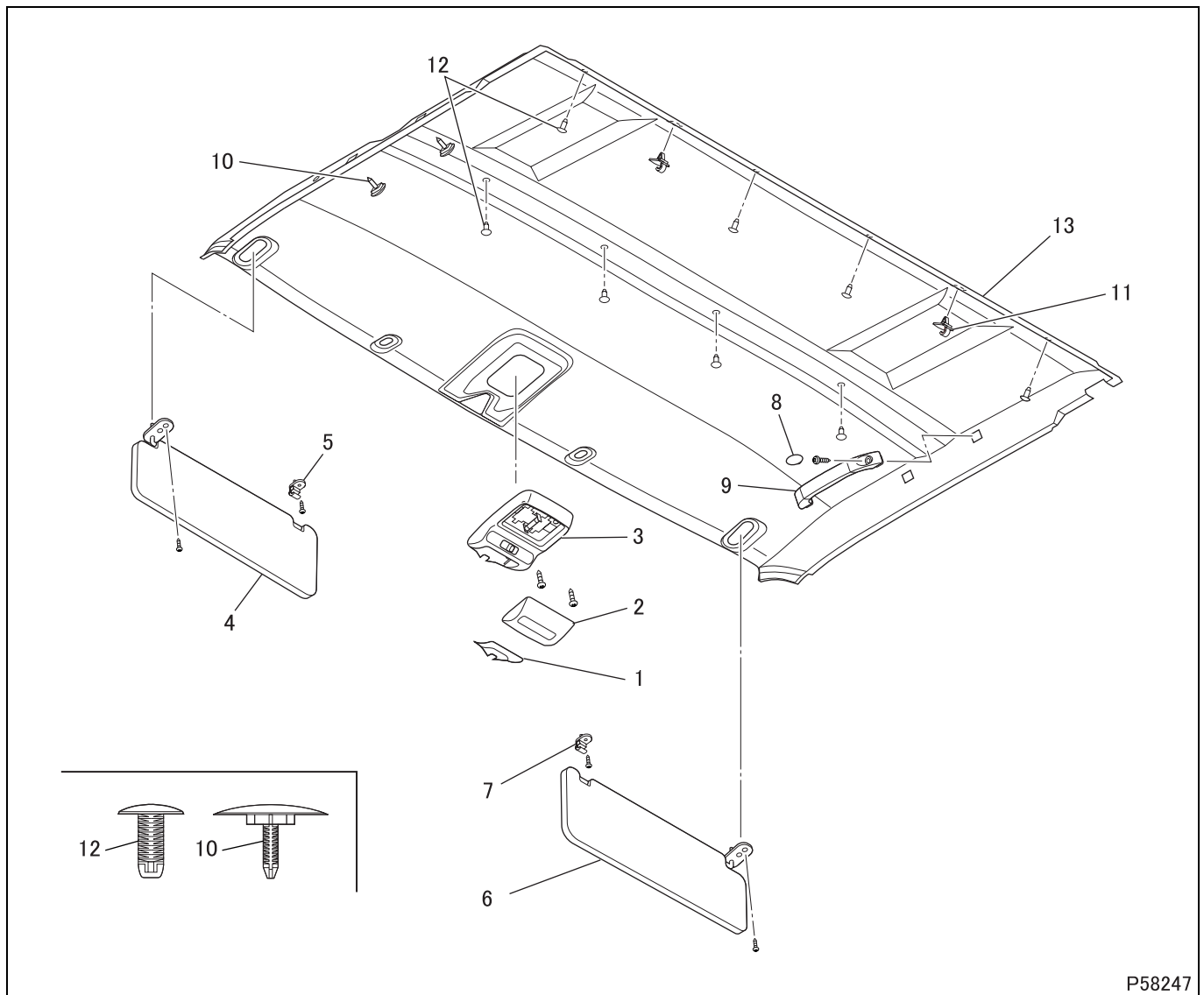


■ Installation: Scuff plate

- Install the scuff plate in such a manner that it holds down the lip of the weatherstrip.

M E M O

HEAD LINING



P58247

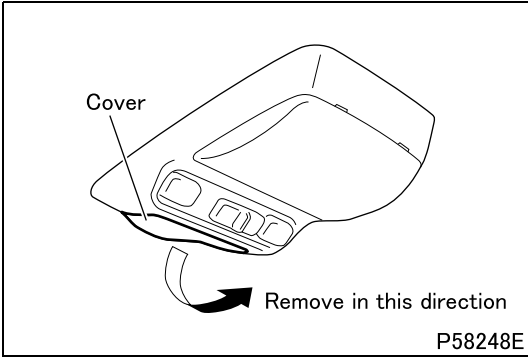
● Removal sequence

- | | |
|--------------------------|----------------|
| 1 Cover | 8 Cap |
| 2 Lens | 9 Grip |
| 3 Room lamp | 10 Plug |
| 4 Sun visor (left-hand) | 11 Coat hanger |
| 5 Sun visor hook | 12 Clip (x 8) |
| 6 Sun visor (right-hand) | 13 Head lining |
| 7 Sun visor hook | |

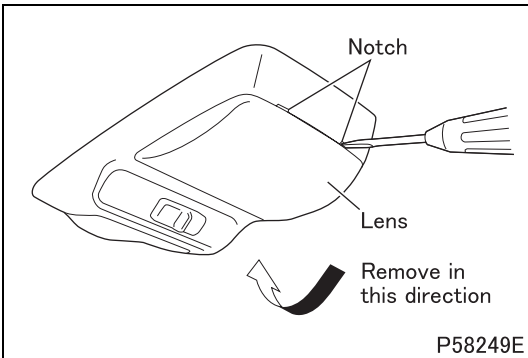
● Installation sequence

Follow the removal sequence in reverse.

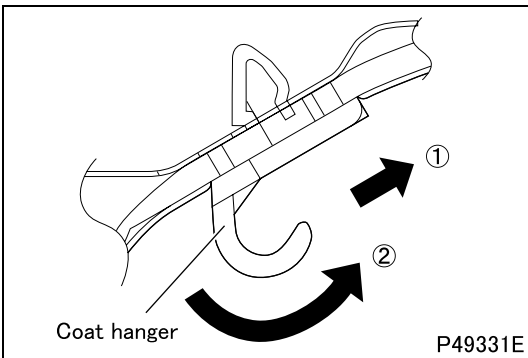
◆ Removal procedure ◆



■ Removal: Cover



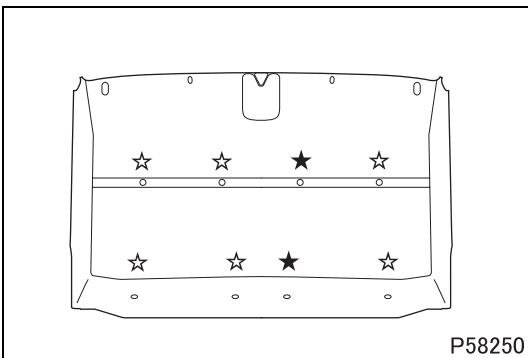
■ Removal: Lens



■ Removal: Coat hanger

- Remove the coat hanger from the head lining by pulling it in the direction of "2" while pressing it in the direction of "1".

◆ Installation procedure ◆



■ Installation: Head lining

- Locate the head lining correctly onto the cab by installing clips at the locations ★ (× 2). Install clips at the locations ☆ (× 6).